

Datasheet for ABIN2776056
anti-ZNF558 antibody (N-Term)[Go to Product page](#)

1 Image

Overview

Quantity:	100 µL
Target:	ZNF558
Binding Specificity:	N-Term
Reactivity:	Human, Rat
Host:	Rabbit
Clonality:	Polyclonal
Conjugate:	This ZNF558 antibody is un-conjugated
Application:	Western Blotting (WB)

Product Details

Immunogen:	The immunogen is a synthetic peptide directed towards the N terminal region of human ZNF558
Sequence:	GILPSTCPDL ETLLKAKWLT PKKNVFRKEQ SKGVKTERSH RGVKLNECNQ
Predicted Reactivity:	Human: 100%, Rat: 85%
Characteristics:	This is a rabbit polyclonal antibody against ZNF558. It was validated on Western Blot using a cell lysate as a positive control.
Purification:	Affinity Purified

Target Details

Target:	ZNF558
---------	--------

Target Details

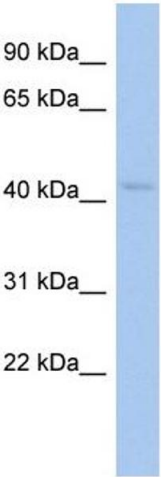
Alternative Name:	ZNF558 (ZNF558 Products)
Background:	<p>ZNF588 contains 1 KRAB domain and 9 C2H2-type zinc fingers. It belongs to the krueppel C2H2-type zinc-finger protein family and may be involved in transcriptional regulation.</p> <p>Alias Symbols: FLJ30932</p> <p>Protein Interaction Partner: EXOSC5, APOE,</p> <p>Protein Size: 402</p>
Molecular Weight:	46 kDa
Gene ID:	148156
NCBI Accession:	NM_144693 , NP_653294
UniProt:	Q96NG5

Application Details

Application Notes:	Optimal working dilutions should be determined experimentally by the investigator.
Comment:	Antigen size: 402 AA
Restrictions:	For Research Use only

Handling

Format:	Liquid
Concentration:	Lot specific
Buffer:	Liquid. Purified antibody supplied in 1x PBS buffer with 0.09 % (w/v) sodium azide and 2 % sucrose.
Preservative:	Sodium azide
Precaution of Use:	This product contains Sodium azide: a POISONOUS AND HAZARDOUS SUBSTANCE which should be handled by trained staff only.
Handling Advice:	Avoid repeated freeze-thaw cycles.
Storage:	-20 °C
Storage Comment:	For short term use, store at 2-8°C up to 1 week. For long term storage, store at -20°C in small aliquots to prevent freeze-thaw cycles.



Western Blotting

Image 1. WB Suggested Anti-ZNF558 Antibody Titration:
0.2-1 ug/ml ELISA Titer: 1:62500 Positive Control: HT1080
cell lysate