

Datasheet for ABIN2776080
anti-CLCN1 antibody (C-Term)[Go to Product page](#)

2 Images

Overview

| | |
|----------------------|--|
| Quantity: | 100 µL |
| Target: | CLCN1 |
| Binding Specificity: | C-Term |
| Reactivity: | Human, Mouse, Rat, Dog, Guinea Pig, Horse, Cow, Goat, Rabbit |
| Host: | Rabbit |
| Clonality: | Polyclonal |
| Conjugate: | This CLCN1 antibody is un-conjugated |
| Application: | Western Blotting (WB) |

Product Details

| | |
|-----------------------|--|
| Immunogen: | The immunogen is a synthetic peptide corresponding to a region of Rat |
| Sequence: | SSIFQRLLC LLGKAHSTKK KITQDSTD LV DNMSPEEIEA WEREQLSQPV |
| Predicted Reactivity: | Cow: 93%, Dog: 86%, Goat: 93%, Guinea Pig: 86%, Horse: 100%, Human: 100%, Mouse: 93%, Rabbit: 93%, Rat: 100% |
| Characteristics: | This is a rabbit polyclonal antibody against Clcn1. It was validated on Western Blot. |
| Purification: | Affinity Purified |

Target Details

| | |
|-------------------|--|
| Target: | CLCN1 |
| Alternative Name: | Clcn1 (CLCN1 Products) |

Target Details

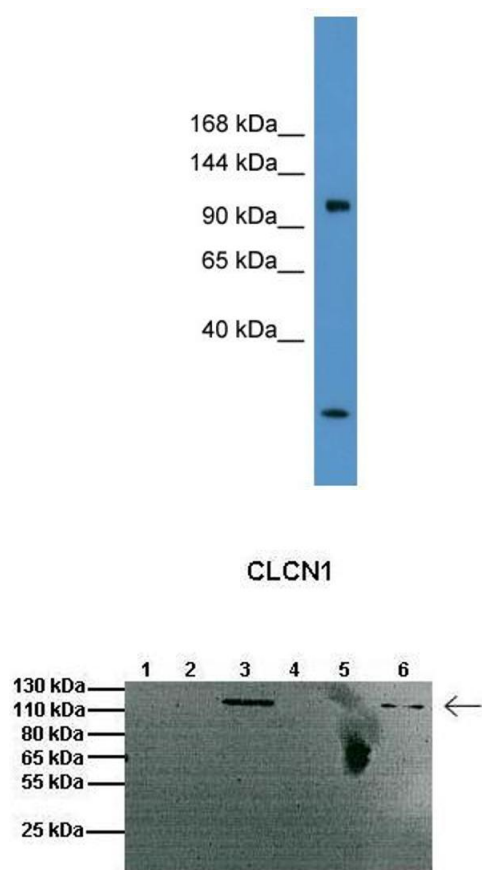
| | |
|-------------------|--|
| Background: | Clcn1 is the voltage-gated chloride channel. Chloride channels have several functions including the regulation of cell volume, membrane potential stabilization, signal transduction and transepithelial transport. Alias Symbols: SMCC, Clcn1 Protein Size: 994 |
| Molecular Weight: | 110 kDa |
| Gene ID: | 25688 |
| NCBI Accession: | NM_013147 , NP_037279 |
| UniProt: | P35524 |

Application Details

| | |
|--------------------|--|
| Application Notes: | Optimal working dilutions should be determined experimentally by the investigator. |
| Comment: | Antigen size: 994 AA |
| Restrictions: | For Research Use only |

Handling

| | |
|--------------------|---|
| Format: | Liquid |
| Concentration: | Lot specific |
| Buffer: | Liquid. Purified antibody supplied in 1x PBS buffer with 0.09 % (w/v) sodium azide and 2 % sucrose. |
| Preservative: | Sodium azide |
| Precaution of Use: | This product contains Sodium azide: a POISONOUS AND HAZARDOUS SUBSTANCE which should be handled by trained staff only. |
| Handling Advice: | Avoid repeated freeze-thaw cycles. |
| Storage: | -20 °C |
| Storage Comment: | For short term use, store at 2-8°C up to 1 week. For long term storage, store at -20°C in small aliquots to prevent freeze-thaw cycles. |



See Immunoblot 2 Data and customer Feedback for more Information

Western Blotting

Image 1. WB Suggested Anti-Clcn1 Antibody Titration: 0.2-1 ug/ml ELISA Titer: 1:62500 Positive Control: Rat Brain

Western Blotting

Image 2. Lanes: 1: 20ug mouse muscle membrane fraction, 2: Empty, 3: 20ug mouse brain membrane fraction, 4: Empty, 5: 20ug mouse muscle cytosolic fraction, 6: 20ug mouse brain cytosolic fraction Primary Antibody Dilution: 1:1000 Secondary Antibody: Anti-rabbit HRP Secondary Antibody Dilution: 1:2000 Gene Name: Clcn1 Submitted by: Anonymous