



Datasheet for ABIN2776081

anti-Chloride Channel 5 antibody (Middle Region)



[Go to Product page](#)

9 Images

Overview

Quantity:	100 µL
Target:	Chloride Channel 5 (CLCN5)
Binding Specificity:	Middle Region
Reactivity:	Human, Mouse, Rat, Cow, Dog, Guinea Pig, Horse, Rabbit, Sheep, Zebrafish (Danio rerio)
Host:	Rabbit
Clonality:	Polyclonal
Conjugate:	This Chloride Channel 5 antibody is un-conjugated
Application:	Western Blotting (WB)

Product Details

Immunogen:	The immunogen is a synthetic peptide corresponding to a region of Mouse
Sequence:	LVVIMFELTG GLEYIVPLMA AAMTSKWVAD ALGREGIYDA HIRLNGYPFL
Predicted Reactivity:	Cow: 100%, Dog: 100%, Guinea Pig: 100%, Horse: 100%, Human: 100%, Mouse: 100%, Rabbit: 100%, Rat: 100%, Sheep: 100%, Zebrafish: 93%
Characteristics:	This is a rabbit polyclonal antibody against Clcn5. It was validated on Western Blot.
Purification:	Affinity Purified

Target Details

Target:	Chloride Channel 5 (CLCN5)
Alternative Name:	Clcn5 (CLCN5 Products)

Target Details

Background: Clcn5 is a proton-coupled chloride transporter. Clcn5 functions as antiport system and exchanges chloride ions against protons. Clcn5 is important for normal acidification of the endosome lumen. Clcn5 may play an important role in renal tubular function.

Alias Symbols: 5430408K11Rik, CIC-5, Clc5, D930009B12Rik, DXImx42e, Sfc13, T25545

Protein Size: 746

Molecular Weight: 83 kDa

Gene ID: 12728

NCBI Accession: [NM_016691](#), [NP_057900](#)

UniProt: [Q9WVD4](#)

Application Details

Application Notes: Optimal working dilutions should be determined experimentally by the investigator.

Comment: Antigen size: 746 AA

Restrictions: For Research Use only

Handling

Format: Liquid

Concentration: Lot specific

Buffer: Liquid. Purified antibody supplied in 1x PBS buffer with 0.09 % (w/v) sodium azide and 2 % sucrose.

Preservative: Sodium azide

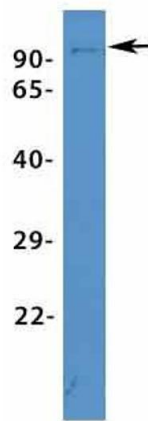
Precaution of Use: This product contains Sodium azide: a POISONOUS AND HAZARDOUS SUBSTANCE which should be handled by trained staff only.

Handling Advice: Avoid repeated freeze-thaw cycles.

Storage: -20 °C

Storage Comment: For short term use, store at 2-8°C up to 1 week. For long term storage, store at -20°C in small aliquots to prevent freeze-thaw cycles.

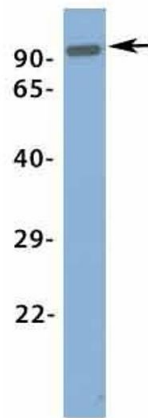
Clcn5



Western Blotting

Image 1. Host: Rabbit Target Name: Clcn5 Sample Type: Mouse Spleen Antibody Dilution: 1.0ug/ml

Clcn5



Western Blotting

Image 2. Host: Rabbit Target Name: Clcn5 Sample Type: Rat Brain Antibody Dilution: 1.0ug/ml



Western Blotting

Image 3. WB Suggested Anti-Clcn5 Antibody Titration: 0.2-1 ug/ml ELISA Titer: 1:62500 Positive Control: Mouse Brain

Please check the [product details page](#) for more images. Overall 9 images are available for ABIN2776081.