

Datasheet for ABIN2776083
anti-CLCNKB antibody (C-Term)



[Go to Product page](#)

1 Image

Overview

Quantity:	100 µL
Target:	CLCNKB
Binding Specificity:	C-Term
Reactivity:	Human, Mouse, Rat, Dog, Cow, Guinea Pig, Horse, Rabbit, Pig
Host:	Rabbit
Clonality:	Polyclonal
Conjugate:	This CLCNKB antibody is un-conjugated
Application:	Western Blotting (WB)

Product Details

Immunogen:	The immunogen is a synthetic peptide directed towards the C terminal region of human CLCNKB
Sequence:	ILAAGCPTEP VTLKLSPETS LHEAHNLFEL LNLHSLFVTS RGRAVGCVSW
Predicted Reactivity:	Cow: 100%, Dog: 85%, Guinea Pig: 77%, Horse: 100%, Human: 100%, Mouse: 86%, Pig: 100%, Rabbit: 93%, Rat: 86%
Characteristics:	This is a rabbit polyclonal antibody against CLCNKB. It was validated on Western Blot using a cell lysate as a positive control.
Purification:	Affinity Purified

Target Details

Target:	CLCNKB
---------	--------

Target Details

Alternative Name:	CLCNKB (CLCNKB Products)
Background:	<p>Chloride channel Kb (CLCNKB) is a member of the CLC family of voltage-gated chloride channels, which comprises at least 9 mammalian chloride channels. Each is believed to have 12 transmembrane domains and intracellular N and C termini. Mutations in CLCNKB result in the autosomal recessive Type III Bartter Syndrome. CLCNKA and CLCNKB are closely related (94 % sequence identity), tightly linked (separated by 11 kb of genomic sequence) and are both expressed in mammalian kidney.</p> <p>Alias Symbols: CLCKB, CIC-K2, CIC-Kb, hCIC-Kb</p> <p>Protein Interaction Partner: Dlg4,</p> <p>Protein Size: 687</p>
Molecular Weight:	76 kDa
Gene ID:	1188
NCBI Accession:	NM_000085 , NP_000076
UniProt:	P51801

Application Details

Application Notes:	Optimal working dilutions should be determined experimentally by the investigator.
Comment:	Antigen size: 687 AA
Restrictions:	For Research Use only

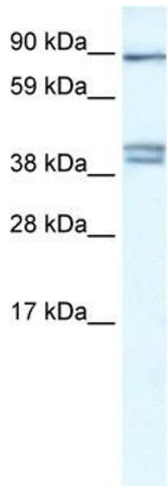
Handling

Format:	Liquid
Concentration:	Lot specific
Buffer:	Liquid. Purified antibody supplied in 1x PBS buffer with 0.09 % (w/v) sodium azide and 2 % sucrose.
Preservative:	Sodium azide
Precaution of Use:	This product contains Sodium azide: a POISONOUS AND HAZARDOUS SUBSTANCE which should be handled by trained staff only.
Handling Advice:	Avoid repeated freeze-thaw cycles.
Storage:	-20 °C

Handling

Storage Comment: For short term use, store at 2-8°C up to 1 week. For long term storage, store at -20°C in small aliquots to prevent freeze-thaw cycles.

Images



Western Blotting

Image 1. WB Suggested Anti-CLCNKB Antibody Titration: 0.2-1 ug/ml ELISA Titer: 1:312500 Positive Control: Human kidney