



[Go to Product page](#)

Datasheet for ABIN2776085

## anti-KCNQ1 antibody (N-Term)

4 Images

1 Publication

### Overview

Quantity:	100 µL
Target:	KCNQ1
Binding Specificity:	N-Term
Reactivity:	Human, Mouse, Rat, Dog, Cow, Rabbit, Zebrafish (Danio rerio), Guinea Pig, Horse
Host:	Rabbit
Clonality:	Polyclonal
Conjugate:	This KCNQ1 antibody is un-conjugated
Application:	Western Blotting (WB), Immunohistochemistry (IHC)

### Product Details

Immunogen:	The immunogen is a synthetic peptide directed towards the N terminal region of human KCNQ1
Sequence:	RSKYVGLWGR LRFARKPISI IDLIVVWASM VVLCVGSKGQ VFATSAIRGI
Predicted Reactivity:	Cow: 100%, Dog: 100%, Guinea Pig: 100%, Horse: 100%, Human: 100%, Mouse: 100%, Rabbit: 100%, Rat: 100%, Zebrafish: 92%
Characteristics:	This is a rabbit polyclonal antibody against KCNQ1. It was validated on Western Blot using a cell lysate as a positive control.
Purification:	Affinity Purified

### Target Details

Target:	KCNQ1
---------	-------

## Target Details

---

Alternative Name: [KCNQ1 \(KCNQ1 Products\)](#)

---

Background: Voltage-gated potassium (Kv) channels represent the most complex class of voltage-gated ion channels from both functional and structural standpoints. Their diverse functions include regulating neurotransmitter release, heart rate, insulin secretion, neuronal excitability, epithelial electrolyte transport, smooth muscle contraction, and cell volume. KCNG1 is a member of the potassium channel, voltage-gated, subfamily G. Voltage-gated potassium (Kv) channels represent the most complex class of voltage-gated ion channels from both functional and structural standpoints. Their diverse functions include regulating neurotransmitter release, heart rate, insulin secretion, neuronal excitability, epithelial electrolyte transport, smooth muscle contraction, and cell volume. This gene encodes a member of the potassium channel, voltage-gated, subfamily G. This gene is abundantly expressed in skeletal muscle. Alternative splicing results in at least two transcript variants encoding distinct isoforms.

Alias Symbols: ATFB1, FLJ26167, JLNS1, KCNA8, KCNA9, KVLQT1, Kv1.9, Kv7.1, LQT, LQT1, RWS, SQT2, WRS, ATFB3

Protein Interaction Partner: ATP4A, NEDD4L, AP2M1, USP2, UBC, NEDD4, PRKACA, KCNE1, HSPA4, KCNE4, AKAP9, KCNE2, TRAF6, KCNQ2, PRKAR2A, PPP1CA,  
Protein Size: 586

---

Molecular Weight: 64 kDa

---

Gene ID: 3784

---

NCBI Accession: [NM\\_181797](#), [NP\\_861462](#)

---

Pathways: [Negative Regulation of Hormone Secretion](#), [Sensory Perception of Sound](#)

---

## Application Details

---

Application Notes: Optimal working dilutions should be determined experimentally by the investigator.

---

Comment: Antigen size: 586 AA

---

Restrictions: For Research Use only

---

## Handling

---

Format: Liquid

---

Concentration: Lot specific

---

Buffer: Liquid. Purified antibody supplied in 1x PBS buffer with 0.09 % (w/v) sodium azide and 2 % sucrose.

---

## Handling

---

Preservative:	Sodium azide
Precaution of Use:	This product contains Sodium azide: a POISONOUS AND HAZARDOUS SUBSTANCE which should be handled by trained staff only.
Handling Advice:	Avoid repeated freeze-thaw cycles.
Storage:	-20 °C
Storage Comment:	For short term use, store at 2-8°C up to 1 week. For long term storage, store at -20°C in small aliquots to prevent freeze-thaw cycles.

## Publications

---

Product cited in: Hirata, Yimin, Segawa, Ozaki, Kobayashi, Shigyo, Chiba: "Xanthohumol prevents atherosclerosis by reducing arterial cholesterol content via CETP and apolipoprotein E in CETP-transgenic mice." in: **PLoS ONE**, Vol. 7, Issue 11, pp. e49415, (2012) ([PubMed](#)).

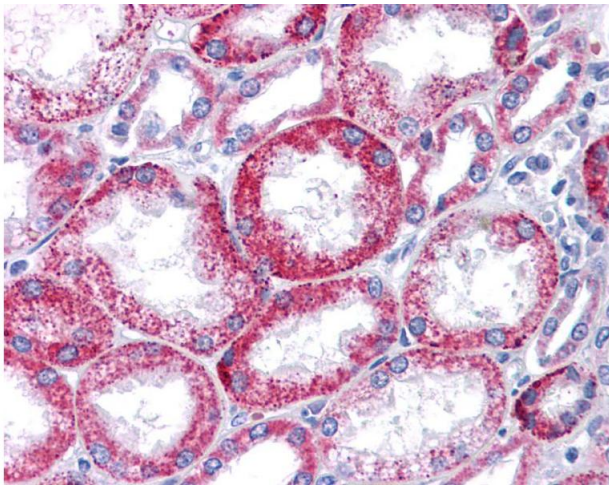
## Images

---

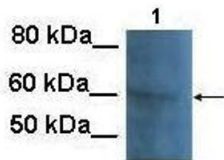


### Western Blotting

**Image 1.** WB Suggested Anti-KCNQ1 Antibody Titration: 0.2-1 ug/ml ELISA Titer: 1:312500 Positive Control: Human Liver



KCNQ1



### Immunohistochemistry

Image 2.

### Western Blotting

**Image 3.** Lanes: 100 ug CHO cell lysate Primary Antibody Dilution: 1:1000 Secondary Antibody: Goat anti-rabbit HRP Secondary Antibody Dilution: 1:25000 Gene Name: KCNQ1 Submitted by: Anonymous

See Immunoblot 2 Data and Customer Feedback for more information

Please check the [product details page](#) for more images. Overall 4 images are available for ABIN2776085.