

Datasheet for ABIN2776087
anti-PKD2 antibody (N-Term)



[Go to Product page](#)

2 Images

Overview

Quantity:	100 µL
Target:	PKD2
Binding Specificity:	N-Term
Reactivity:	Human, Mouse, Rat, Cow, Dog, Horse, Guinea Pig, Rabbit
Host:	Rabbit
Clonality:	Polyclonal
Conjugate:	This PKD2 antibody is un-conjugated
Application:	Western Blotting (WB)

Product Details

Immunogen:	The immunogen is a synthetic peptide directed towards the N-terminal region of Human PKD2
Sequence:	GLRGLWGTRL MEESSTNREK YLKSVLRELV TYLLFLIVLC ILTYGMMSSN
Predicted Reactivity:	Cow: 93%, Dog: 86%, Guinea Pig: 100%, Horse: 86%, Human: 100%, Mouse: 100%, Rabbit: 100%, Rat: 100%
Characteristics:	This is a rabbit polyclonal antibody against PKD2. It was validated on Western Blot.
Purification:	Affinity Purified

Target Details

Target:	PKD2
Alternative Name:	PKD2 (PKD2 Products)

Target Details

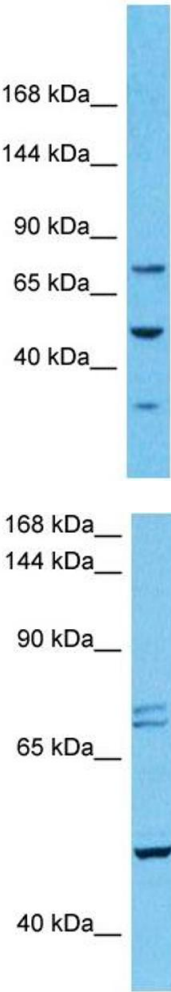
Background:	<p>This gene encodes a member of the polycystin protein family. The encoded protein is a multi-pass membrane protein that functions as a calcium permeable cation channel, and is involved in calcium transport and calcium signaling in renal epithelial cells. This protein interacts with polycystin 1, and they may be partners in a common signaling cascade involved in tubular morphogenesis. Mutations in this gene are associated with autosomal dominant polycystic kidney disease type 2.</p> <p>Protein Interaction Partner: MAGEA8, PLSCR1, KRTAP10-3, KRTAP10-8, KRT40, PKD1, GOLGA2, CANX, ATP1A1, UBC, PACS2, HAX1, TRPC1, TNNI3, PACS1, CD2AP, DIAPH1, TPM1, PKD2, ACTN2,</p> <p>Protein Size: 646</p>
Molecular Weight:	71 kDa
Gene ID:	5311
Pathways:	cAMP Metabolic Process , Maintenance of Protein Location , Negative Regulation of Transporter Activity

Application Details

Application Notes:	Optimal working dilution should be determined by the investigator.
Restrictions:	For Research Use only

Handling

Format:	Liquid
Concentration:	1 mg/mL
Buffer:	Liquid. Purified antibody supplied in 1x PBS buffer with 0.09 % (w/v) sodium azide and 2 % sucrose.
Preservative:	Sodium azide
Precaution of Use:	This product contains Sodium azide: a POISONOUS AND HAZARDOUS SUBSTANCE which should be handled by trained staff only.
Handling Advice:	Avoid repeat freeze-thaw cycles.
Storage:	-20 °C
Storage Comment:	For short term use, store at 2-8°C up to 1 week. For long term storage, store at -20°C in small aliquots to prevent freeze-thaw cycles.



Western Blotting

Image 1. Host: Rabbit Target Name: PKD2 Sample Type: Stomach Tumor lysates Antibody Dilution: 1.0ug/ml

Western Blotting

Image 2. Host: Mouse Target Name: PKD2 Sample Tissue: Mouse Heart Antibody Dilution: 1ug/ml