



[Go to Product page](#)

Datasheet for ABIN2776089  
**anti-SCN5A antibody (C-Term)**

2 Images

### Overview

Quantity:	100 µL
Target:	SCN5A
Binding Specificity:	C-Term
Reactivity:	Human, Mouse, Rat, Dog, Cow, Guinea Pig, Horse
Host:	Rabbit
Clonality:	Polyclonal
Conjugate:	This SCN5A antibody is un-conjugated
Application:	Western Blotting (WB), Immunohistochemistry (IHC)

### Product Details

Immunogen:	The immunogen is a synthetic peptide directed towards the C-terminal region of Human SCN5A
Sequence:	VMSENF SRPL GPPSSSSISS TSFP PSYDSV TRATSDNLQV RGS DYSHSED
Predicted Reactivity:	Cow: 86%, Dog: 86%, Guinea Pig: 93%, Horse: 86%, Human: 100%, Mouse: 86%, Rat: 93%
Characteristics:	This is a rabbit polyclonal antibody against SCN5A. It was validated on Western Blot.
Purification:	Affinity Purified

### Target Details

Target:	SCN5A
Alternative Name:	SCN5A ( <a href="#">SCN5A Products</a> )
Background:	The protein encoded by this gene is an integral membrane protein and tetrodotoxin-resistant

## Target Details

---

voltage-gated sodium channel subunit. This protein is found primarily in cardiac muscle and is responsible for the initial upstroke of the action potential in an electrocardiogram. Defects in this gene are a cause of long QT syndrome type 3 (LQT3), an autosomal dominant cardiac disease. Alternative splicing results in several transcript variants encoding different isoforms.

Alias Symbols: CDCD2, CMD1E, CMPD2, HB1, HB2, HBBB, HH1, ICCD, IVF, LQT3, Nav1.5, PFHB1, SSS1, VF1

Protein Interaction Partner: CALM1, CAV3, ALB, Nedd4, WWP2, UBC, SNTG2, NEDD4L, DLG2, INADL, DLG4, RGS3, SNTA1, DLG1, RGS2, SCN5A, SNTB2, SNTB1, DLG3, CBL,

Protein Size: 2015

---

Molecular Weight: 227 kDa

---

Gene ID: 6331

---

NCBI Accession: [NM\\_000335](#), [NP\\_000326](#)

---

UniProt: [Q14524](#)

## Application Details

---

Application Notes: Optimal working dilutions should be determined experimentally by the investigator.

---

Comment: Antigen size: 2015 AA

---

Restrictions: For Research Use only

## Handling

---

Format: Liquid

---

Concentration: Lot specific

---

Buffer: Liquid. Purified antibody supplied in 1x PBS buffer with 0.09 % (w/v) sodium azide and 2 % sucrose.

---

Preservative: Sodium azide

---

Precaution of Use: This product contains Sodium azide: a POISONOUS AND HAZARDOUS SUBSTANCE which should be handled by trained staff only.

---

Handling Advice: Avoid repeated freeze-thaw cycles.

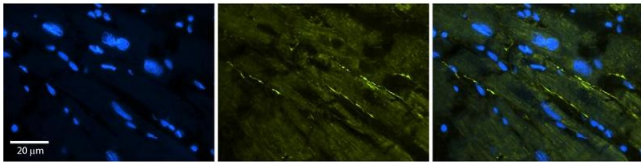
---

Storage: -20 °C

---

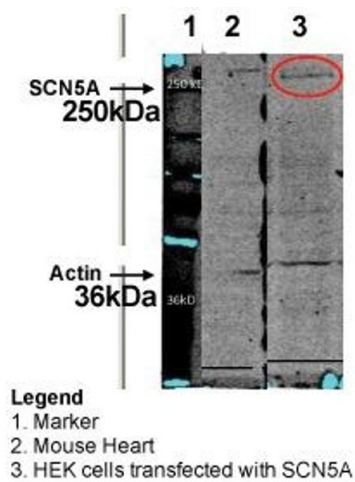
Storage Comment: For short term use, store at 2-8°C up to 1 week. For long term storage, store at -20°C in small

aliquots to prevent freeze-thaw cycles.



### Immunohistochemistry

**Image 1.** Rabbit Anti-SCN5A Antibody Catalog Number: ARP34935\_P050 Formalin Fixed Paraffin Embedded Tissue: Human Adult heart Observed Staining: Membrane (stronger than with ARP34934) Primary Antibody Concentration: 1:600 Secondary Antibody: Donkey anti-Rabbit-Cy2/3 Secondary Antibody Concentration: 1:200 Magnification: 20X Exposure Time: 0.5 – 2.0 sec Protocol located in Reviews and Data.



### Western Blotting

**Image 2.** WB Suggested Anti-SCN5A Antibody Titration: HEK cel lysate; HEK cel with HuNav1.5 transfected lysate; Mouse Heart lysate 80 ug protein on gel QC Antibodies 1:100 in PBS/Tweensecondary antibodie 1:10.000 (IRDYE 800 CWGoat anti Rabbit IgG) analyse with the Licor Odyssey Positive Control: HEK cel lysate; HEK cel with HuNav1.5 transfected lysate; Mouse Heart lysate 80 ug protein on gel QC Antibodies 1:100 in PBS/Tweensecondary antibodie 1:10.000 (IRDYE 800 CWGoat anti Rabbit IgG) analyse with the Licor Odyssey