

Datasheet for ABIN2776130  
**anti-CLIC1 antibody (N-Term)**[Go to Product page](#)

6 Images

1 Publication

## Overview

Quantity:	100 µL
Target:	CLIC1
Binding Specificity:	N-Term
Reactivity:	Human, Rat, Mouse, Cow, Horse, Goat, Rabbit, Guinea Pig, Dog, Zebrafish (Danio rerio)
Host:	Rabbit
Clonality:	Polyclonal
Conjugate:	This CLIC1 antibody is un-conjugated
Application:	Western Blotting (WB), Immunohistochemistry (IHC)

## Product Details

Immunogen:	The immunogen is a synthetic peptide directed towards the N terminal region of human CLIC1
Sequence:	GQLPFLLYGT EVHTDTNKIE EFLEAVLCPP RYPKLAALNP ESNTAGLDIF
Predicted Reactivity:	Cow: 100%, Dog: 100%, Goat: 100%, Guinea Pig: 100%, Horse: 100%, Human: 100%, Mouse: 100%, Rabbit: 100%, Rat: 100%, Zebrafish: 93%
Characteristics:	This is a rabbit polyclonal antibody against CLIC1 Channel1. It was validated on Western Blot and immunohistochemistry.
Purification:	Protein A purified

## Target Details

Target:	CLIC1
---------	-------

## Target Details

Alternative Name:	CLIC1 ( <a href="#">CLIC1 Products</a> )
Background:	<p>Chloride intracellular channel 1 is a member of the p64 family, a diverse group of proteins that regulate fundamental cellular processes including stabilization of cell membrane potential, transepithelial transport, maintenance of intracellular pH , and regulation of cell volume. CLIC1 Channel1 encodes a protein that localizes principally to the cell nucleus and exhibits both nuclear and plasma membrane chloride ion channel activity.</p> <p>Alias Symbols: G6, NCC27</p> <p>Protein Interaction Partner: UBC, PSMD10, SUMO2, SUMO1, NEDD8, FBXO6, ZNF302, NUP62, PRDX4, IKBKG, ZNF184, VCAM1, THRA, RPLP1, NTF4, ITGA4, FN1, ATF2, CPT1A, ATP6V0A1, ATP6V0C, ATP5F1, ALOX5AP, GRK5, MYOC, CDK2, ISG15, ARRB2, SUMO4, LSM1, AKAP9, TRAPPC2,</p> <p>Protein Size: 241</p>
Molecular Weight:	27 kDa
Gene ID:	1192
NCBI Accession:	<a href="#">NM_001288</a> , <a href="#">NP_001279</a>
UniProt:	<a href="#">Q502X1</a>

## Application Details

Application Notes:	Optimal working dilutions should be determined experimentally by the investigator.
Comment:	Antigen size: 241 AA
Restrictions:	For Research Use only

## Handling

Format:	Liquid
Concentration:	Lot specific
Buffer:	Liquid. Purified antibody supplied in 1x PBS buffer with 0.09 % (w/v) sodium azide and 2 % sucrose.
Preservative:	Sodium azide
Precaution of Use:	This product contains Sodium azide: a POISONOUS AND HAZARDOUS SUBSTANCE which should be handled by trained staff only.
Handling Advice:	Avoid repeated freeze-thaw cycles.

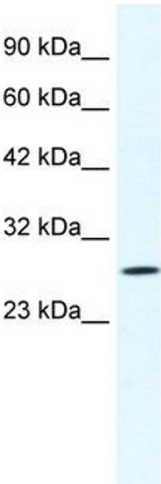
Handling

Storage:	-20 °C
Storage Comment:	For short term use, store at 2-8°C up to 1 week. For long term storage, store at -20°C in small aliquots to prevent freeze-thaw cycles.

Publications

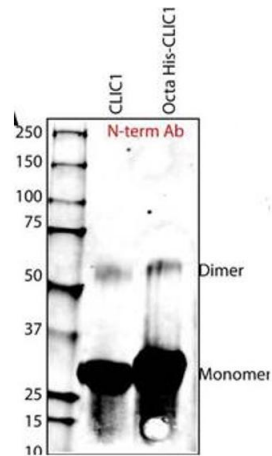
Product cited in:	Tilley, Harvey, Heguy, Hackett, Wang, OConnor, Crystal: "Down-regulation of the notch pathway in human airway epithelium in association with smoking and chronic obstructive pulmonary disease." in: <b>American journal of respiratory and critical care medicine</b> , Vol. 179, Issue 6, pp. 457-66, (2009) ( <a href="#">PubMed</a> ).
-------------------	--

Images



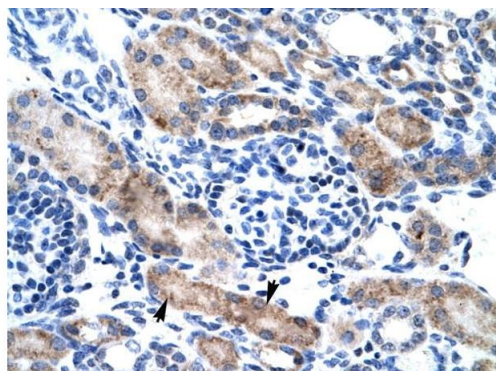
**Western Blotting**

**Image 1.** WB Suggested Anti-CLIC1 Antibody Titration: 1.25ug/ml ELISA Titer: 1:312500 Positive Control: Jurkat cell lysate



**Western Blotting**

**Image 2.** Sample Type: Purified Recombinant CLIC-1 Protein Primary Dilution: 1:1000Submitted By: Harpreet Singh, University of California Los Angeles



Rabbit Anti-CLIC1 Antibody  
Catalog Number: ARP35045  
Lot Number: QC4436  
Paraffin Embedded Tissue: Human Kidney  
Cells with Positive label: Epithelial cells of renal tubule (Indicated with Arrows)  
Antibody Concentration: 4.0-8.0 µg/ml  
Magnification: 400X

### Immunohistochemistry

**Image 3.** Human kidney

Please check the [product details page](#) for more images. Overall 6 images are available for ABIN2776130.