

Datasheet for ABIN2776135  
**anti-GABRR2 antibody (Middle Region)**

5 Images

1 Publication

[Go to Product page](#)

## Overview

Quantity:	100 µL
Target:	GABRR2
Binding Specificity:	Middle Region
Reactivity:	Human, Rat, Mouse, Dog, Cow, Guinea Pig, Horse, Rabbit, Zebrafish (Danio rerio)
Host:	Rabbit
Clonality:	Polyclonal
Conjugate:	This GABRR2 antibody is un-conjugated
Application:	Western Blotting (WB), Immunohistochemistry (IHC)

## Product Details

Immunogen:	The immunogen is a synthetic peptide directed towards the middle region of human GABRR2
Sequence:	SNKSMTFDGR LVKKIWVPDV FVHRSKRSFT HDTTDDNIML RVFPDGHVLY
Predicted Reactivity:	Cow: 93%, Dog: 100%, Guinea Pig: 93%, Horse: 93%, Human: 100%, Mouse: 93%, Rabbit: 93%, Rat: 100%, Zebrafish: 93%
Characteristics:	This is a rabbit polyclonal antibody against GABRR2. It was validated on Western Blot using a cell lysate as a positive control.
Purification:	Affinity Purified

## Target Details

Target:	GABRR2
---------	--------

## Target Details

Alternative Name:	GABRR2 ( <a href="#">GABRR2 Products</a> )
Background:	<p>GABA is the major inhibitory neurotransmitter in the mammalian brain where it acts at GABA receptors, which are ligand-gated chloride channels. GABRR2 is a member of the rho subunit family and is a component of the GABA receptor complex. GABA is the major inhibitory neurotransmitter in the mammalian brain where it acts at GABA receptors, which are ligand-gated chloride channels. The protein encoded by this gene is a member of the rho subunit family and is a component of the GABA receptor complex. PRIMARYREFSEQ_SPAN PRIMARY_IDENTIFIER PRIMARY_SPAN COMP 1-30 BX490975.1 60-89 31-1586 BC130352.1 1-1556 1587-1631 M86868.1 1584-1628</p> <p>Alias Symbols: -</p> <p>Protein Interaction Partner: GABRR1, SQSTM1, PRKCA, MAP1B, CSNK2A1,</p> <p>Protein Size: 490</p>
Molecular Weight:	54 kDa
Gene ID:	2570
NCBI Accession:	<a href="#">NM_002043</a> , <a href="#">NP_002034</a>
UniProt:	<a href="#">P28476</a>

## Application Details

Application Notes:	Optimal working dilutions should be determined experimentally by the investigator.
Comment:	Antigen size: 490 AA
Restrictions:	For Research Use only

## Handling

Format:	Liquid
Concentration:	Lot specific
Buffer:	Liquid. Purified antibody supplied in 1x PBS buffer with 0.09 % (w/v) sodium azide and 2 % sucrose.
Preservative:	Sodium azide
Precaution of Use:	This product contains Sodium azide: a POISONOUS AND HAZARDOUS SUBSTANCE which should be handled by trained staff only.
Handling Advice:	Avoid repeated freeze-thaw cycles.

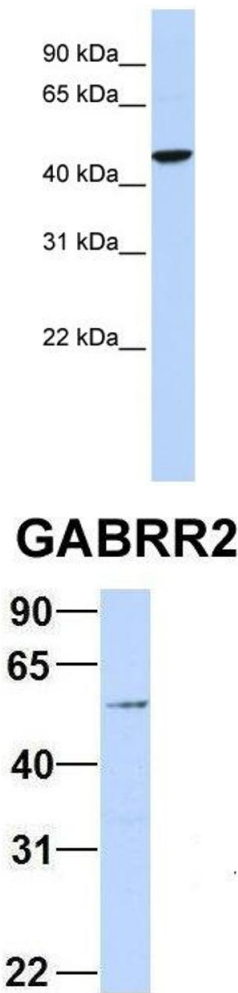
## Handling

Storage:	-20 °C
Storage Comment:	For short term use, store at 2-8°C up to 1 week. For long term storage, store at -20°C in small aliquots to prevent freeze-thaw cycles.

## Publications

Product cited in:	Mehrle, Rosenfelder, Schupp, del Val, Arlt, Hahne, Bechtel, Simpson, Hofmann, Hide, Glatting, Huber, Pepperkok, Poustka, Wiemann: "The LIFEdb database in 2006." in: <b>Nucleic acids research</b> , Vol. 34, Issue Database issue, pp. D415-8, (2005) ( <a href="#">PubMed</a> ).
-------------------	--

## Images

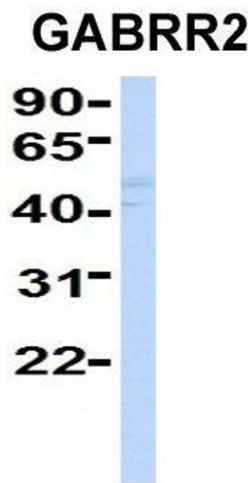


### Western Blotting

**Image 1.** WB Suggested Anti-GABRR2 Antibody Titration: 0.2-1 ug/ml ELISA Titer: 1:312500 Positive Control: Hela cell lysate

### Western Blotting

**Image 2.** Host: Rabbit Target Name: GABRR2 Sample Type: 293T Antibody Dilution: 1.0ug/ml GABRR2 is supported by BioGPS gene expression data to be expressed in HEK293T



**Western Blotting**

**Image 3.** Host: Rabbit Target Name: GABRR2 Sample Type:  
Human Fetal Liver Antibody Dilution: 1.0ug/ml

Please check the [product details page](#) for more images. Overall 5 images are available for ABIN2776135.