

Datasheet for ABIN2776164
anti-CLIC3 antibody (N-Term)



[Go to Product page](#)

1 Image

Overview

Quantity:	100 µL
Target:	CLIC3
Binding Specificity:	N-Term
Reactivity:	Human, Mouse, Rat, Cow, Dog, Guinea Pig, Horse
Host:	Rabbit
Clonality:	Polyclonal
Conjugate:	This CLIC3 antibody is un-conjugated
Application:	Western Blotting (WB)

Product Details

Sequence:	LTTVDTRRSP DVLKDFAPGS QLPILLYDSD AKTDTLQIED FLEETLGPPD
Predicted Reactivity:	Cow: 93%, Dog: 93%, Guinea Pig: 86%, Horse: 93%, Human: 100%, Mouse: 86%, Rat: 86%
Characteristics:	This is a rabbit polyclonal antibody against CLIC3. It was validated on Western Blot.
Purification:	Affinity Purified

Target Details

Target:	CLIC3
Alternative Name:	CLIC3 (CLIC3 Products)
Background:	Chloride channels are a diverse group of proteins that regulate fundamental cellular processes including stabilization of cell membrane potential, transepithelial transport, maintenance of

Target Details

intracellular pH , and regulation of cell volume. Chloride intracellular channel 3 is a member of the p64 family and is predominantly localized in the nucleus and stimulates chloride ion channel activity. In addition, this protein may participate in cellular growth control, based on its association with ERK7, a member of the MAP kinase family.

Alias Symbols: -

Protein Interaction Partner: EFHC2, APP, POT1, MAPK15, DNM1,

Protein Size: 236

Molecular Weight: 27 kDa

Gene ID: 9022

NCBI Accession: [NM_004669](#), [NP_004660](#)

UniProt: [O95833](#)

Application Details

Application Notes: Optimal working dilutions should be determined experimentally by the investigator.

Comment: Antigen size: 236 AA

Restrictions: For Research Use only

Handling

Format: Liquid

Concentration: Lot specific

Buffer: Liquid. Purified antibody supplied in 1x PBS buffer with 0.09 % (w/v) sodium azide and 2 % sucrose.

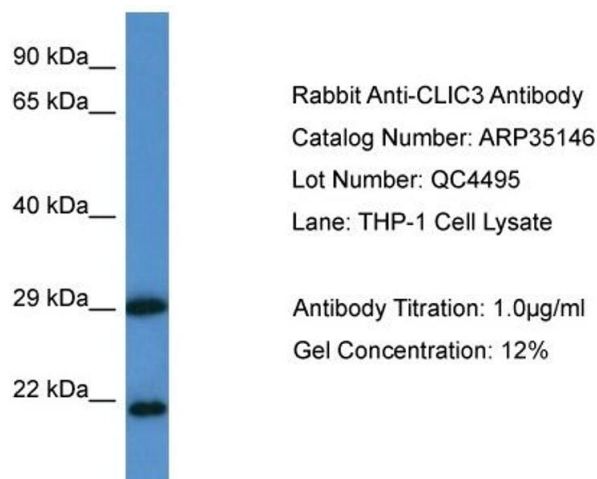
Preservative: Sodium azide

Precaution of Use: This product contains Sodium azide: a POISONOUS AND HAZARDOUS SUBSTANCE which should be handled by trained staff only.

Handling Advice: Avoid repeated freeze-thaw cycles.

Storage: -20 °C

Storage Comment: For short term use, store at 2-8°C up to 1 week. For long term storage, store at -20°C in small aliquots to prevent freeze-thaw cycles.



Western Blotting

Image 1. WB Suggested Anti-CLIC3 Antibody Titration: 1.0 ug/ml Positive Control: THP-1 Whole Cell