

Datasheet for ABIN2776166
anti-KCNAB3 antibody (N-Term)[Go to Product page](#)

2 Images

Overview

Quantity:	100 µL
Target:	KCNAB3
Binding Specificity:	N-Term
Reactivity:	Human, Rat, Mouse, Dog, Cow, Guinea Pig, Horse, Rabbit
Host:	Rabbit
Clonality:	Polyclonal
Conjugate:	This KCNAB3 antibody is un-conjugated
Application:	Western Blotting (WB), Immunohistochemistry (IHC)

Product Details

Immunogen:	The immunogen is a synthetic peptide directed towards the N terminal region of human KCNAB3
Sequence:	RNLGKSGLRV SCLGLGTWVT FGSQISDETA EDVLTVAYEH GVNLFDTAEV
Predicted Reactivity:	Cow: 100%, Dog: 100%, Guinea Pig: 100%, Horse: 100%, Human: 100%, Mouse: 93%, Rabbit: 100%, Rat: 100%
Characteristics:	This is a rabbit polyclonal antibody against KCNAB3. It was validated on Western Blot and immunohistochemistry.
Purification:	Protein A purified

Target Details

Target:	KCNAB3
---------	--------

Target Details

Alternative Name:	KCNAB3 (KCNAB3 Products)
Background:	<p>Voltage-gated potassium (Kv) channels represent the most complex class of voltage-gated ion channels from both functional and structural standpoints. Their diverse functions include regulating neurotransmitter release, heart rate, insulin secretion, neuronal excitability, epithelial electrolyte transport, smooth muscle contraction, and cell volume. Four sequence-related potassium channel genes - shaker, shaw, shab, and shal - have been identified in Drosophila, and each has been shown to have human homolog(s). This gene encodes a member of the potassium channel, voltage-gated, shaker-related subfamily. This member is one of the beta subunits, which are auxiliary proteins associating with functional Kv-alpha subunits. This member and the KCNA5 gene product assemble into a heteromultimeric A-type channel that inactivates completely and is significantly faster than other A-type Kv channels.</p> <p>Alias Symbols: AKR6A9, KCNA3B, KCNA3.1B, KV-BETA-3</p> <p>Protein Interaction Partner: APP, UBC, NEDD4L,</p> <p>Protein Size: 404</p>
Molecular Weight:	44 kDa
Gene ID:	9196
NCBI Accession:	NM_004732 , NP_004723
UniProt:	O43448

Application Details

Application Notes:	Optimal working dilutions should be determined experimentally by the investigator.
Comment:	Antigen size: 404 AA
Restrictions:	For Research Use only

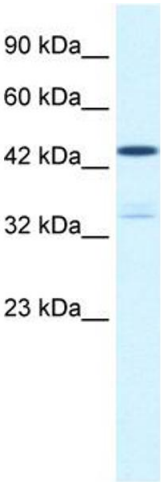
Handling

Format:	Liquid
Concentration:	Lot specific
Buffer:	Liquid. Purified antibody supplied in 1x PBS buffer with 0.09 % (w/v) sodium azide and 2 % sucrose.
Preservative:	Sodium azide
Precaution of Use:	This product contains Sodium azide: a POISONOUS AND HAZARDOUS SUBSTANCE which

Handling

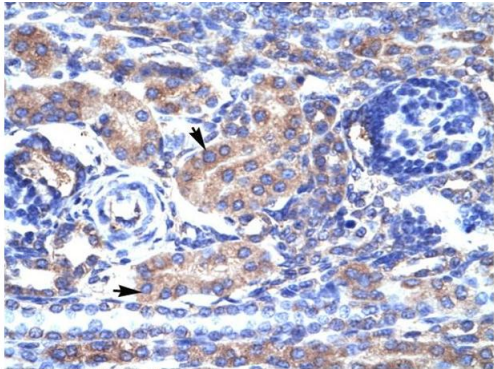
	should be handled by trained staff only.
Handling Advice:	Avoid repeated freeze-thaw cycles.
Storage:	-20 °C
Storage Comment:	For short term use, store at 2-8°C up to 1 week. For long term storage, store at -20°C in small aliquots to prevent freeze-thaw cycles.

Images



Western Blotting

Image 1. WB Suggested Anti-KCNAB3 Antibody Titration: 0.65ug/ml ELISA Titer: 1:12500 Positive Control: Jurkat cell lysate



Rabbit Anti-KCNAB3 Antibody
Catalog Number: ARP35151
Lot Number: QC4497
Paraffin Embedded Tissue: Human Kidney
Cells with Positive label: Epithelial cells of renal tubule (Indicated with Arrows)
Antibody Concentration: 4.0-8.0 µg/ml
Magnification: 400X

Immunohistochemistry

Image 2. Human kidney