

Datasheet for ABIN2776169
anti-KCNC3 antibody (Middle Region)

5 Images

[Go to Product page](#)

Overview

| | |
|----------------------|---|
| Quantity: | 100 µL |
| Target: | KCNC3 |
| Binding Specificity: | Middle Region |
| Reactivity: | Human, Mouse, Rat, Rabbit, Guinea Pig, Cow |
| Host: | Rabbit |
| Clonality: | Polyclonal |
| Conjugate: | This KCNC3 antibody is un-conjugated |
| Application: | Western Blotting (WB), Immunohistochemistry (IHC) |

Product Details

| | |
|-----------------------|---|
| Immunogen: | The immunogen is a synthetic peptide directed towards the middle region of human KCNC3 |
| Sequence: | YAERIGADPD DILGSNHTYF KNIPIGFWWA VVTMTTLGYG DMYPKTWSGM |
| Predicted Reactivity: | Cow: 93%, Guinea Pig: 100%, Human: 100%, Mouse: 100%, Rabbit: 100%, Rat: 100% |
| Characteristics: | This is a rabbit polyclonal antibody against KCNC3. It was validated on Western Blot using a cell lysate as a positive control. |
| Purification: | Affinity Purified |

Target Details

| | |
|-------------------|--|
| Target: | KCNC3 |
| Alternative Name: | KCNC3 (KCNC3 Products) |

Target Details

| | |
|-------------|--|
| Background: | <p>The Shaker gene family of Drosophila encodes components of voltage-gated potassium channels and is comprised of four subfamilies. Based on sequence similarity, this gene is similar to one of these subfamilies, namely the Shaw subfamily. KCNC3 belongs to the delayed rectifier class of channel proteins and is an integral membrane protein that mediates the voltage-dependent potassium ion permeability of excitable membranes. The Shaker gene family of Drosophila encodes components of voltage-gated potassium channels and is comprised of four subfamilies. Based on sequence similarity, this gene is similar to one of these subfamilies, namely the Shaw subfamily. The protein encoded by this gene belongs to the delayed rectifier class of channel proteins and is an integral membrane protein that mediates the voltage-dependent potassium ion permeability of excitable membranes.</p> <p>Alias Symbols: KSHIID, KV3.3, SCA13</p> <p>Protein Interaction Partner: SUMO1,</p> <p>Protein Size: 757</p> |
|-------------|--|

| | |
|-------------------|--------|
| Molecular Weight: | 80 kDa |
|-------------------|--------|

| | |
|----------|------|
| Gene ID: | 3748 |
|----------|------|

| | |
|-----------------|---|
| NCBI Accession: | NM_004977 , NP_004968 |
|-----------------|---|

| | |
|----------|------------------------|
| UniProt: | Q14003 |
|----------|------------------------|

Application Details

| | |
|--------------------|--|
| Application Notes: | Optimal working dilutions should be determined experimentally by the investigator. |
|--------------------|--|

| | |
|----------|----------------------|
| Comment: | Antigen size: 757 AA |
|----------|----------------------|

| | |
|---------------|-----------------------|
| Restrictions: | For Research Use only |
|---------------|-----------------------|

Handling

| | |
|---------|--------|
| Format: | Liquid |
|---------|--------|

| | |
|----------------|--------------|
| Concentration: | Lot specific |
|----------------|--------------|

| | |
|---------|---|
| Buffer: | Liquid. Purified antibody supplied in 1x PBS buffer with 0.09 % (w/v) sodium azide and 2 % sucrose. |
|---------|---|

| | |
|---------------|--------------|
| Preservative: | Sodium azide |
|---------------|--------------|

| | |
|--------------------|--|
| Precaution of Use: | This product contains Sodium azide: a POISONOUS AND HAZARDOUS SUBSTANCE which should be handled by trained staff only. |
|--------------------|--|

Handling

| | |
|------------------|---|
| Handling Advice: | Avoid repeated freeze-thaw cycles. |
| Storage: | -20 °C |
| Storage Comment: | For short term use, store at 2-8°C up to 1 week. For long term storage, store at -20°C in small aliquots to prevent freeze-thaw cycles. |

Images



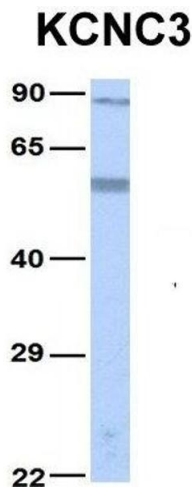
Western Blotting

Image 1. WB Suggested Anti-KCNC3 Antibody Titration: 0.2-1 ug/ml ELISA Titer: 1:62500 Positive Control: 293T cell lysate KCNC3 is supported by BioGPS gene expression data to be expressed in HEK293T



Western Blotting

Image 2. WB Suggested Anti-KCNC3 antibody Titration: 1 ug/mL Sample Type: Human liver



Western Blotting

Image 3. Host: Rabbit Target Name: KCNC3 Sample Type:
Human Fetal Lung Antibody Dilution: 1.0ug/ml

Please check the [product details page](#) for more images. Overall 5 images are available for ABIN2776169.