



Datasheet for ABIN2776180  
**anti-KCNA10 antibody (Middle Region)**



[Go to Product page](#)

2 Images

Overview

Quantity:	100 µL
Target:	KCNA10
Binding Specificity:	Middle Region
Reactivity:	Human, Mouse, Rat, Cow, Dog, Guinea Pig
Host:	Rabbit
Clonality:	Polyclonal
Conjugate:	This KCNA10 antibody is un-conjugated
Application:	Western Blotting (WB), Immunohistochemistry (IHC)

Product Details

Immunogen:	The immunogen is a synthetic peptide directed towards the middle region of human KCNA10
Sequence:	PANVPIDIFA DEISFYELGS EAMDQFREDE GFIKDPETLL PTNDIHRQFW
Predicted Reactivity:	Cow: 100%, Dog: 92%, Guinea Pig: 92%, Human: 100%, Mouse: 100%, Rat: 100%
Characteristics:	This is a rabbit polyclonal antibody against KCNA10. It was validated on Western Blot and immunohistochemistry.
Purification:	Protein A purified

Target Details

Target:	KCNA10
Alternative Name:	KCNA10 ( <a href="#">KCNA10 Products</a> )

## Target Details

---

**Background:** Potassium channels represent the most complex class of voltage-gated ion channels from both functional and structural standpoints. Four sequence-related potassium channel genes, shaker, shaw, shab, and shal, have been identified in *Drosophila*, and each has been shown to have human homolog(s). KCNA10 encodes a member of the potassium channel, voltage-gated, shaker-related subfamily. This member contains six membrane-spanning domains with a shaker-type repeat in the fourth segment. It is specifically regulated by cGMP and postulated to mediate the effects of substances that increase intracellular cGMP.

Alias Symbols: Kcn1, Kv1.8

Protein Interaction Partner: POMP,

Protein Size: 511

---

**Molecular Weight:** 56 kDa

---

**Gene ID:** 3744

---

**NCBI Accession:** [NM\\_005549](#), [NP\\_005540](#)

---

**UniProt:** [Q16322](#)

## Application Details

---

**Application Notes:** Optimal working dilutions should be determined experimentally by the investigator.

---

**Comment:** Antigen size: 511 AA

---

**Restrictions:** For Research Use only

## Handling

---

**Format:** Liquid

---

**Concentration:** Lot specific

---

**Buffer:** Liquid. Purified antibody supplied in 1x PBS buffer with 0.09 % (w/v) sodium azide and 2 % sucrose.

---

**Preservative:** Sodium azide

---

**Precaution of Use:** This product contains Sodium azide: a POISONOUS AND HAZARDOUS SUBSTANCE which should be handled by trained staff only.

---

**Handling Advice:** Avoid repeated freeze-thaw cycles.

---

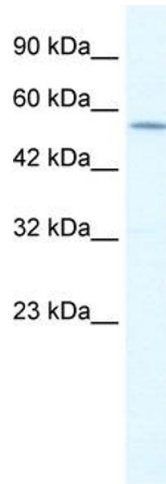
**Storage:** -20 °C

---

## Handling

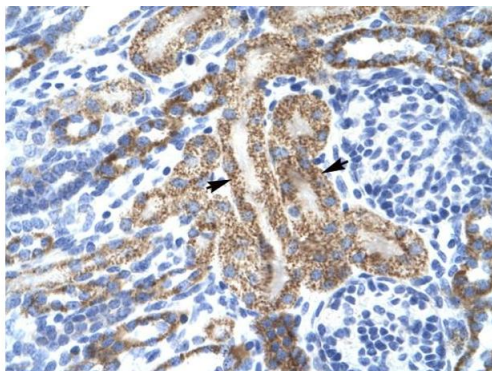
Storage Comment: For short term use, store at 2-8°C up to 1 week. For long term storage, store at -20°C in small aliquots to prevent freeze-thaw cycles.

## Images



### Western Blotting

**Image 1.** WB Suggested Anti-KCNA10 Antibody Titration: 1.25ug/ml ELISA Titer: 1:312500 Positive Control: Jurkat cell lysate



Rabbit Anti-KCNA10 Antibody  
Catalog Number: ARP35178  
Lot Number: QC4510  
Paraffin Embedded Tissue: Human Kidney  
Cells with Positive label: Epithelial cells of renal tubule (Indicated with Arrows)  
Antibody Concentration: 4.0-8.0 µg/ml  
Magnification: 400X

### Immunohistochemistry

**Image 2.** Human kidney