

Datasheet for ABIN2776185  
**anti-PKDREJ antibody (Middle Region)**[Go to Product page](#)

## 1 Image

## Overview

Quantity:	100 µL
Target:	PKDREJ
Binding Specificity:	Middle Region
Reactivity:	Human
Host:	Rabbit
Clonality:	Polyclonal
Conjugate:	This PKDREJ antibody is un-conjugated
Application:	Western Blotting (WB)

## Product Details

Immunogen:	The immunogen is a synthetic peptide directed towards the middle region of human PKDREJ
Sequence:	GVADNGSVLE ITPDVAEVYL VRKNLTFAAF NLTVGPNSEV DGSLKKTGG
Predicted Reactivity:	Human: 100%
Characteristics:	This is a rabbit polyclonal antibody against PKDREJ. It was validated on Western Blot using a cell lysate as a positive control.
Purification:	Affinity Purified

## Target Details

Target:	PKDREJ
Alternative Name:	PKDREJ ( <a href="#">PKDREJ Products</a> )

## Target Details

Background:	<p>PKDREJ is a member of the polycystin protein family. The encoded protein contains 11 transmembrane domains, a receptor for egg jelly (REJ) domain, a G-protein-coupled receptor proteolytic site (GPS) domain, and a polycystin-1, lipoxygenase, alpha-toxin (PLAT) domain. This protein may play a role in human reproduction. This intronless gene encodes a member of the polycystin protein family. The encoded protein contains 11 transmembrane domains, a receptor for egg jelly (REJ) domain, a G-protein-coupled receptor proteolytic site (GPS) domain, and a polycystin-1, lipoxygenase, alpha-toxin (PLAT) domain. This protein may play a role in human reproduction. Alternative splice variants have been described but their biological natures have not been determined.</p> <p>Alias Symbols: -</p> <p>Protein Interaction Partner: LNX2, LNX1,</p> <p>Protein Size: 2253</p>
Molecular Weight:	254 kDa
Gene ID:	10343
NCBI Accession:	<a href="#">NM_006071</a> , <a href="#">NP_006062</a>
UniProt:	<a href="#">Q9NTG1</a>

## Application Details

Application Notes:	Optimal working dilutions should be determined experimentally by the investigator.
Comment:	Antigen size: 2253 AA
Restrictions:	For Research Use only

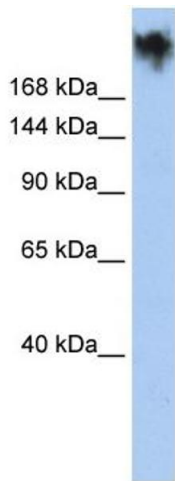
## Handling

Format:	Liquid
Concentration:	Lot specific
Buffer:	Liquid. Purified antibody supplied in 1x PBS buffer with 0.09 % (w/v) sodium azide and 2 % sucrose.
Preservative:	Sodium azide
Precaution of Use:	This product contains Sodium azide: a POISONOUS AND HAZARDOUS SUBSTANCE which should be handled by trained staff only.
Handling Advice:	Avoid repeated freeze-thaw cycles.

Handling

Storage:	-20 °C
Storage Comment:	For short term use, store at 2-8°C up to 1 week. For long term storage, store at -20°C in small aliquots to prevent freeze-thaw cycles.

Images



Western Blotting

**Image 1.** WB Suggested Anti-PKDREJ Antibody Titration: 0.2-1 ug/ml ELISA Titer: 1:12500 Positive Control: HepG2 cell lysate