

Datasheet for ABIN2776187
anti-CLCA2 antibody (C-Term)



[Go to Product page](#)

1 Image

Overview

Quantity:	100 µL
Target:	CLCA2
Binding Specificity:	C-Term
Reactivity:	Human, Mouse, Cow, Dog, Horse, Pig, Rabbit, Rat
Host:	Rabbit
Clonality:	Polyclonal
Conjugate:	This CLCA2 antibody is un-conjugated
Application:	Western Blotting (WB)

Product Details

Immunogen:	The immunogen is a synthetic peptide directed towards the C terminal region of human CLCA2
Sequence:	RYFFSFAANG RYSLKVHVNH SPSISTPAHS IPGSHAMYVP GYTANGNIQM
Predicted Reactivity:	Cow: 100%, Dog: 85%, Horse: 85%, Human: 100%, Mouse: 79%, Pig: 77%, Rabbit: 92%, Rat: 93%
Characteristics:	This is a rabbit polyclonal antibody against CLCA2. It was validated on Western Blot.
Purification:	Affinity Purified

Target Details

Target:	CLCA2
Alternative Name:	CLCA2 (CLCA2 Products)
Background:	The protein encoded by this gene belongs to the calcium sensitive chloride conductance

Target Details

protein family. To date, all members of this gene family map to the same site on chromosome 1p31-p22 and share high degrees of homology in size, sequence and predicted structure, but differ significantly in their tissue distributions. Since this protein is expressed predominantly in trachea and lung, it is suggested to play a role in the complex pathogenesis of cystic fibrosis. It may also serve as adhesion molecule for lung metastatic cancer cells, mediating vascular arrest and colonization, and furthermore, it has been implicated to act as a tumor suppressor gene for breast cancer.

Alias Symbols: CACC, CACC3, CLCRG2, CaCC-3, FLJ97885

Protein Interaction Partner: ALB, ITGB4,

Protein Size: 943

Molecular Weight: 104 kDa

Gene ID: 9635

NCBI Accession: [NM_006536](#), [NP_006527](#)

UniProt: [Q9UQC9](#)

Application Details

Application Notes: Optimal working dilutions should be determined experimentally by the investigator.

Comment: Antigen size: 943 AA

Restrictions: For Research Use only

Handling

Format: Liquid

Concentration: Lot specific

Buffer: Liquid. Purified antibody supplied in 1x PBS buffer with 0.09 % (w/v) sodium azide and 2 % sucrose.

Preservative: Sodium azide

Precaution of Use: This product contains Sodium azide: a POISONOUS AND HAZARDOUS SUBSTANCE which should be handled by trained staff only.

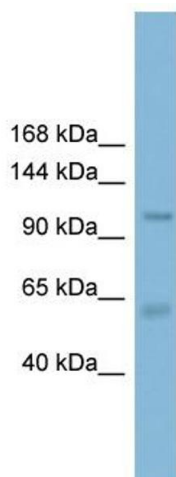
Handling Advice: Avoid repeated freeze-thaw cycles.

Storage: -20 °C

Handling

Storage Comment: For short term use, store at 2-8°C up to 1 week. For long term storage, store at -20°C in small aliquots to prevent freeze-thaw cycles.

Images



Western Blotting

Image 1. WB Suggested Anti-CLCA2 Antibody Titration: 0.2-1 ug/ml ELISA Titer: 1:312500 Positive Control: THP-1 cell lysate