

Datasheet for ABIN2776202

anti-CACNG4 antibody (N-Term)[Go to Product page](#)**1** Image**1** Publication

Overview

Quantity:	100 µL
Target:	CACNG4
Binding Specificity:	N-Term
Reactivity:	Human, Rat, Mouse, Dog, Cow, Guinea Pig, Horse, Rabbit, Zebrafish (Danio rerio), Saccharomyces cerevisiae
Host:	Rabbit
Clonality:	Polyclonal
Conjugate:	This CACNG4 antibody is un-conjugated
Application:	Western Blotting (WB)

Product Details

Immunogen:	The immunogen is a synthetic peptide directed towards the N terminal region of human CACNG4
Sequence:	GPPRRARGD LTHSGLWRVC CIEGIYKGHC FRINHPEDN DYDHSSEYL
Predicted Reactivity:	Cow: 100%, Dog: 93%, Guinea Pig: 100%, Horse: 100%, Human: 100%, Mouse: 100%, Rabbit: 100%, Rat: 100%, Yeast: 90%, Zebrafish: 86%
Characteristics:	This is a rabbit polyclonal antibody against CACNG4. It was validated on Western Blot using a cell lysate as a positive control.
Purification:	Affinity Purified

Target Details

Target:	CACNG4
Alternative Name:	CACNG4 (CACNG4 Products)
Background:	<p>L-type calcium channels are composed of five subunits. CACNG4 represents one of these subunits, gamma, and is one of several gamma subunit proteins. It is an integral membrane protein that is thought to stabilize the calcium channel in an inactive (closed) state. This gene is a member of the neuronal calcium channel gamma subunit gene subfamily of the PMP-22/EMP/MP20 family.L-type calcium channels are composed of five subunits. The protein encoded by this gene represents one of these subunits, gamma, and is one of several gamma subunit proteins. It is an integral membrane protein that is thought to stabilize the calcium channel in an inactive (closed) state. This gene is a member of the neuronal calcium channel gamma subunit gene subfamily of the PMP-22/EMP/MP20 family and is located in a cluster with two similar gamma subunit-encoding genes.L-type calcium channels are composed of five subunits. The protein encoded by this gene represents one of these subunits, gamma, and is one of several gamma subunit proteins. It is an integral membrane protein that is thought to stabilize the calcium channel in an inactive (closed) state. This gene is a member of the neuronal calcium channel gamma subunit gene subfamily of the PMP-22/EMP/MP20 family and is located in a cluster with two similar gamma subunit-encoding genes.</p> <p>Alias Symbols: MGC11138, MGC24983</p> <p>Protein Interaction Partner: SPP1,</p> <p>Protein Size: 327</p>
Molecular Weight:	36 kDa
Gene ID:	27092
NCBI Accession:	NM_014405 , NP_055220
UniProt:	Q9UBN1

Application Details

Application Notes:	Optimal working dilutions should be determined experimentally by the investigator.
Comment:	Antigen size: 327 AA
Restrictions:	For Research Use only

Handling

Format:	Liquid
---------	--------

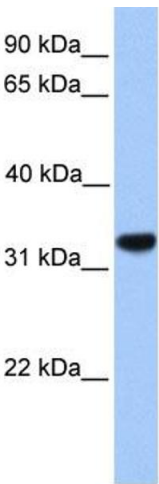
Handling

Concentration:	Lot specific
Buffer:	Liquid. Purified antibody supplied in 1x PBS buffer with 0.09 % (w/v) sodium azide and 2 % sucrose.
Preservative:	Sodium azide
Precaution of Use:	This product contains Sodium azide: a POISONOUS AND HAZARDOUS SUBSTANCE which should be handled by trained staff only.
Handling Advice:	Avoid repeated freeze-thaw cycles.
Storage:	-20 °C
Storage Comment:	For short term use, store at 2-8°C up to 1 week. For long term storage, store at -20°C in small aliquots to prevent freeze-thaw cycles.

Publications

Product cited in:	Moss, Dolphin, Clare: "Human neuronal stargazin-like proteins, gamma2, gamma3 and gamma4; an investigation of their specific localization in human brain and their influence on CaV2.1 voltage-dependent calcium channels expressed in Xenopus oocytes." in: BMC neuroscience , Vol. 4, pp. 23, (2004) (PubMed).
-------------------	---

Images



Western Blotting

Image 1. WB Suggested Anti-CACNG4 Antibody Titration: 0.2-1 ug/ml Positive Control: 721_B cell lysate CACNG4 is supported by BioGPS gene expression data to be expressed in 721_B