

Datasheet for ABIN2776210
anti-MLC1 antibody (Middle Region)[Go to Product page](#)

4 Images

Overview

Quantity:	100 µL
Target:	MLC1
Binding Specificity:	Middle Region
Reactivity:	Human, Mouse, Rat, Dog, Horse, Rabbit, Cow, Guinea Pig
Host:	Rabbit
Clonality:	Polyclonal
Conjugate:	This MLC1 antibody is un-conjugated
Application:	Western Blotting (WB), Immunohistochemistry (IHC)

Product Details

Immunogen:	The immunogen is a synthetic peptide directed towards the middle region of human MLC1
Sequence:	SDSANILDEV PFPARVLKSY SVVEVIAGIS AVLGGIIALN VDDSVSGPHL
Predicted Reactivity:	Cow: 91%, Dog: 86%, Guinea Pig: 92%, Horse: 86%, Human: 100%, Mouse: 93%, Rabbit: 83%, Rat: 93%
Characteristics:	This is a rabbit polyclonal antibody against MLC1. It was validated on Western Blot using a cell lysate as a positive control.
Purification:	Affinity Purified

Target Details

Target:	MLC1
---------	------

Target Details

Abstract:	MLC1 Products
Background:	<p>MLC1 may be a transporter. It may act as a non-selective neuronal cation channel. The function of this gene product is unknown, however, homology to other proteins suggests that it may be an integral membrane transporter. Mutations in this gene have been associated with megalencephalic leukoencephalopathy with subcortical cysts, an autosomal recessive neurological disorder. Alternatively spliced transcript variants encoding different isoforms have been identified.</p> <p>Alias Symbols: KIAA0027, LVM, MLC, VL</p> <p>Protein Interaction Partner: KDM1A, PRMT6, Cav2, Dtnb, Snta1, Dtna, Tuba1a, Kcnj10, Cav1, UBC, TPT1, DAPK2, MYLK,</p> <p>Protein Size: 377</p>
Molecular Weight:	41 kDa
Gene ID:	23209
NCBI Accession:	NM_015166 , NP_055981
UniProt:	Q15049

Application Details

Application Notes:	Optimal working dilutions should be determined experimentally by the investigator.
Comment:	Antigen size: 377 AA
Restrictions:	For Research Use only

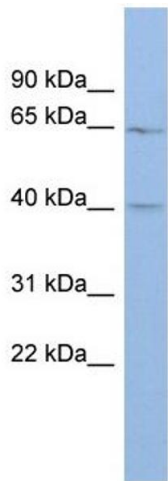
Handling

Format:	Liquid
Concentration:	Lot specific
Buffer:	Liquid. Purified antibody supplied in 1x PBS buffer with 0.09 % (w/v) sodium azide and 2 % sucrose.
Preservative:	Sodium azide
Precaution of Use:	This product contains Sodium azide: a POISONOUS AND HAZARDOUS SUBSTANCE which should be handled by trained staff only.
Handling Advice:	Avoid repeated freeze-thaw cycles.

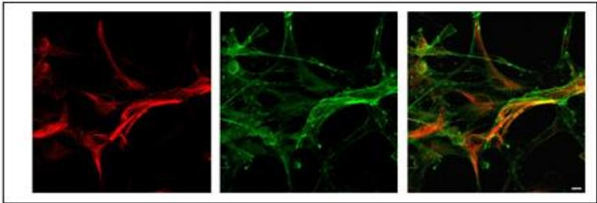
Handling

Storage:	-20 °C
Storage Comment:	For short term use, store at 2-8°C up to 1 week. For long term storage, store at -20°C in small aliquots to prevent freeze-thaw cycles.

Validation report #104256 for Western Blotting (WB)



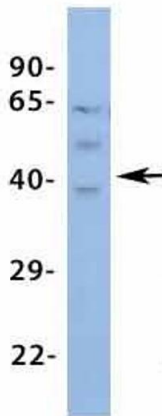
MLC1 (ARP35249_P050)
Immunohistochemistry
Sample: Rat Astrocytes
Dilution: 1:50



Application data in forum

Submitted by:
Elena Ambrosini
Istituto Superiore di Sanita
Italy

MLC1



Western Blotting

Image 1. WB Suggested Anti-MLC1 Antibody Titration: 0.2-1 ug/ml ELISA Titer: 1:12500 Positive Control: Human Spleen

Immunohistochemistry

Image 2. Sample Type: Rat Astrocytes Dilution: 1:50

Western Blotting

Image 3. Host: Rabbit Target Name: MLC1 Sample Type: Human Fetal Spleen Antibody Dilution: 1.0ug/ml

Please check the [product details page](#) for more images. Overall 4 images are available for ABIN2776210.