

Datasheet for ABIN2776211

anti-KCTD3 antibody (Middle Region)[Go to Product page](#)**2** Images

Overview

Quantity:	100 µL
Target:	KCTD3
Binding Specificity:	Middle Region
Reactivity:	Human, Dog, Guinea Pig, Horse, Rabbit, Zebrafish (Danio rerio), Cow, Mouse, Rat
Host:	Rabbit
Clonality:	Polyclonal
Conjugate:	This KCTD3 antibody is un-conjugated
Application:	Western Blotting (WB), Immunohistochemistry (IHC)

Product Details

Immunogen:	The immunogen is a synthetic peptide directed towards the middle region of human KCTD3
Sequence:	VNKSEDKDVG GPTEEEELLKL LDQCDLSTSR CATPNISPAT SVVQHSRLRE
Predicted Reactivity:	Cow: 100%, Dog: 100%, Guinea Pig: 100%, Horse: 100%, Human: 100%, Mouse: 93%, Rabbit: 100%, Rat: 93%, Zebrafish: 85%
Characteristics:	This is a rabbit polyclonal antibody against KCTD3. It was validated on Western Blot using a cell lysate as a positive control.
Purification:	Affinity Purified

Target Details

Target:	KCTD3
---------	-------

Target Details

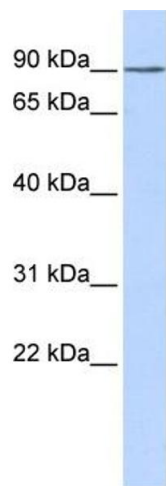
Alternative Name:	KCTD3 (KCTD3 Products)
Background:	<p>KCTD3 belongs to the KCTD3 family. It contains 1 BTB (POZ) domain and 5 WD repeats. The exact function of KCTD3 is not known.</p> <p>Alias Symbols: MGC43935, NY-REN-45</p> <p>Protein Interaction Partner: MMS19, UBC, STXBP1, MRI1, LRRC40, DCUN1D1, COPS5, CUL3, NEDD8, ARRB1, SH3KBP1, SRC, COPS6, USP13, LSM8,</p> <p>Protein Size: 815</p>
Molecular Weight:	89 kDa
Gene ID:	51133
NCBI Accession:	NM_016121 , NP_057205
UniProt:	Q9Y597

Application Details

Application Notes:	Optimal working dilutions should be determined experimentally by the investigator.
Comment:	Antigen size: 815 AA
Restrictions:	For Research Use only

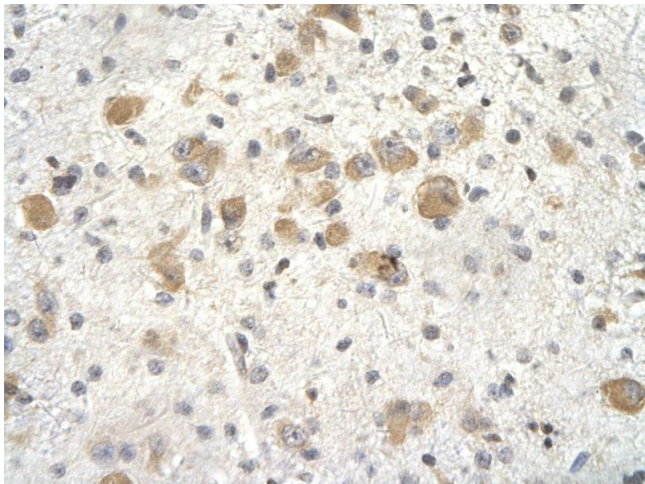
Handling

Format:	Liquid
Concentration:	Lot specific
Buffer:	Liquid. Purified antibody supplied in 1x PBS buffer with 0.09 % (w/v) sodium azide and 2 % sucrose.
Preservative:	Sodium azide
Precaution of Use:	This product contains Sodium azide: a POISONOUS AND HAZARDOUS SUBSTANCE which should be handled by trained staff only.
Handling Advice:	Avoid repeated freeze-thaw cycles.
Storage:	-20 °C
Storage Comment:	For short term use, store at 2-8°C up to 1 week. For long term storage, store at -20°C in small aliquots to prevent freeze-thaw cycles.



Western Blotting

Image 1. WB Suggested Anti-KCTD3 Antibody Titration: 0.2-1 ug/ml ELISA Titer: 1:62500 Positive Control: HeLa cell lysate KCTD3 is supported by BioGPS gene expression data to be expressed in HeLa



Immunohistochemistry

Image 2. Rabbit Anti-KCTD3 Antibody Paraffin Embedded Tissue: Human neural cell Cellular Data: Epithelial cells of renal tubule Antibody Concentration: 4.0-8.0 ug/ml Magnification: 400X