

Datasheet for ABIN2776215
anti-P2RX2 antibody (Middle Region)



[Go to Product page](#)

2 Images

Overview

Quantity:	100 µL
Target:	P2RX2
Binding Specificity:	Middle Region
Reactivity:	Human, Mouse, Rat, Rabbit, Horse, Dog, Guinea Pig, Cow
Host:	Rabbit
Clonality:	Polyclonal
Conjugate:	This P2RX2 antibody is un-conjugated
Application:	Western Blotting (WB), Immunohistochemistry (IHC)

Product Details

Immunogen:	The immunogen is a synthetic peptide directed towards the middle region of human P2RX2
Sequence:	LIKNSIHYPK FHFSKGNIAD RTDGYLKRCT FHEASDLYCP IFKLG FIVEK
Predicted Reactivity:	Cow: 77%, Dog: 77%, Guinea Pig: 85%, Horse: 77%, Human: 100%, Mouse: 91%, Rabbit: 85%, Rat: 91%
Characteristics:	This is a rabbit polyclonal antibody against P2RX2. It was validated on Western Blot and immunohistochemistry.
Purification:	Protein A purified

Target Details

Target:	P2RX2
---------	-------

Target Details

Alternative Name:	P2RX2 (P2RX2 Products)
Background:	<p>P2RX2 belongs to the family of purinoceptors for ATP. This receptor functions as a ligand-gated ion channel. Binding to ATP mediates synaptic transmission between neurons and from neurons to smooth muscle. Six transcript variants encoding six distinct isoforms have been identified for this gene.</p> <p>Alias Symbols: P2X2</p> <p>Protein Interaction Partner: P2RX2, GABRR1, P2RX3, P2RX1,</p> <p>Protein Size: 379</p>
Molecular Weight:	42 kDa
Gene ID:	22953
NCBI Accession:	NM_174872 , NP_777361
Pathways:	Skeletal Muscle Fiber Development , Positive Regulation of Endopeptidase Activity

Application Details

Application Notes:	Optimal working dilutions should be determined experimentally by the investigator.
Comment:	Antigen size: 379 AA
Restrictions:	For Research Use only

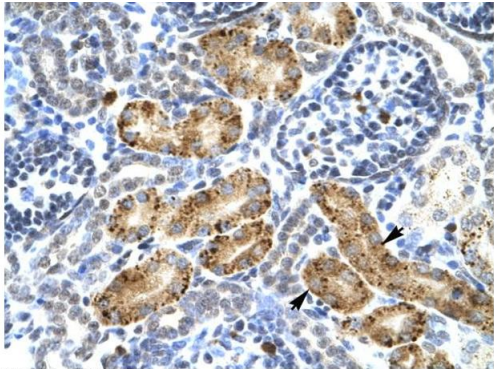
Handling

Format:	Liquid
Concentration:	Lot specific
Buffer:	Liquid. Purified antibody supplied in 1x PBS buffer with 0.09 % (w/v) sodium azide and 2 % sucrose.
Preservative:	Sodium azide
Precaution of Use:	This product contains Sodium azide: a POISONOUS AND HAZARDOUS SUBSTANCE which should be handled by trained staff only.
Handling Advice:	Avoid repeated freeze-thaw cycles.
Storage:	-20 °C
Storage Comment:	For short term use, store at 2-8°C up to 1 week. For long term storage, store at -20°C in small aliquots to prevent freeze-thaw cycles.



Western Blotting

Image 1. WB Suggested Anti-P2RX2 Antibody Titration: 0.6ug/ml ELISA Titer: 1:62500 Positive Control: Jurkat cell lysate



Immunohistochemistry

Image 2. Human kidney

Rabbit Anti-P2RX2 Antibody
Catalog Number: ARP35259
Lot Number: QC4559
Paraffin Embedded Tissue: Human Kidney
Cells with Positive label: Epithelial cells of renal tubule(Indicated with Arrows)
Antibody Concentration: 4.0-8.0 µg/ml
Magnification: 400X