

Datasheet for ABIN2776218
anti-CLIC5 antibody (Middle Region)[Go to Product page](#)

2 Images

1 Publication

Overview

Quantity:	100 µL
Target:	CLIC5
Binding Specificity:	Middle Region
Reactivity:	Human, Mouse, Rat, Rabbit, Guinea Pig, Horse, Cow, Dog, Zebrafish (Danio rerio), Pig
Host:	Rabbit
Clonality:	Polyclonal
Conjugate:	This CLIC5 antibody is un-conjugated
Application:	Western Blotting (WB), Immunohistochemistry (IHC)

Product Details

Immunogen:	The immunogen is a synthetic peptide directed towards the middle region of human CLIC5
Sequence:	HPPFLTNGD VKTDVNKIEE FLEETLTPEK YPKLAAKHRE SNTAGIDIFS
Predicted Reactivity:	Cow: 93%, Dog: 86%, Guinea Pig: 86%, Horse: 100%, Human: 100%, Mouse: 100%, Pig: 93%, Rabbit: 100%, Rat: 100%, Zebrafish: 79%
Characteristics:	This is a rabbit polyclonal antibody against CLIC5. It was validated on Western Blot and immunohistochemistry.
Purification:	Protein A purified

Target Details

Target:	CLIC5
---------	-------

Target Details

Alternative Name:	CLIC5 (CLIC5 Products)
Background:	<p>CLIon Channel5 specifically associates with the cytoskeleton of placenta microvilli. CLIon Channel-5A has a role as a chloride channel in vitro and binds to cortical actin cytoskeleton.</p> <p>Alias Symbols: MST130, MSTP130</p> <p>Protein Interaction Partner: SRPK1, FN1, IQGAP1, GSN, EZR, ACTA1, ACTN1,</p> <p>Protein Size: 410</p>
Molecular Weight:	46 kDa
Gene ID:	53405
UniProt:	Q9NZA1
Pathways:	Sensory Perception of Sound

Application Details

Application Notes:	Optimal working dilutions should be determined experimentally by the investigator.
Comment:	Antigen size: 410 AA
Restrictions:	For Research Use only

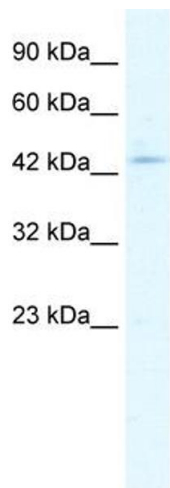
Handling

Format:	Liquid
Concentration:	Lot specific
Buffer:	Liquid. Purified antibody supplied in 1x PBS buffer with 0.09 % (w/v) sodium azide and 2 % sucrose.
Preservative:	Sodium azide
Precaution of Use:	This product contains Sodium azide: a POISONOUS AND HAZARDOUS SUBSTANCE which should be handled by trained staff only.
Handling Advice:	Avoid repeated freeze-thaw cycles.
Storage:	-20 °C
Storage Comment:	For short term use, store at 2-8°C up to 1 week. For long term storage, store at -20°C in small aliquots to prevent freeze-thaw cycles.

Publications

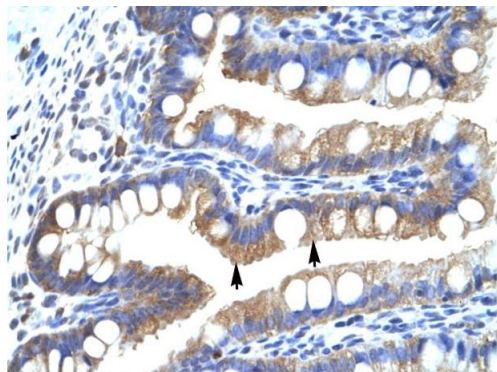
Product cited in: Li, Yin, Ni, Liu, Zhang, Du: "Chloride intracellular channel 5 modulates adipocyte accumulation in skeletal muscle by inhibiting preadipocyte differentiation." in: **Journal of cellular biochemistry**, Vol. 110, Issue 4, pp. 1013-21, (2010) ([PubMed](#)).

Images



Western Blotting

Image 1. WB Suggested Anti-CLIC5 Antibody Titration: 1.25ug/ml ELISA Titer: 1:62500 Positive Control: Jurkat cell lysate There is BioGPS gene expression data showing that CLIC5 is expressed in Jurkat



Immunohistochemistry

Image 2. Human Intestine

Rabbit Anti-CLIC5 Antibody
Catalog Number: ARP35262
Lot Number: QC4562
Paraffin Embedded Tissue: Human Intestine
Cells with Positive label: Epithelial cells of intestinal villus (Indicated with Arrows)
Antibody Concentration: 4.0-8.0 µg/ml
Magnification: 400X