



[Go to Product page](#)

Datasheet for ABIN2776220

## anti-CLIC5 antibody (C-Term)

3 Images

1 Publication

### Overview

Quantity:	100 µL
Target:	CLIC5
Binding Specificity:	C-Term
Reactivity:	Human, Mouse, Rat, Rabbit, Guinea Pig, Horse, Cow, Dog, Zebrafish (Danio rerio)
Host:	Rabbit
Clonality:	Polyclonal
Conjugate:	This CLIC5 antibody is un-conjugated
Application:	Western Blotting (WB), Immunohistochemistry (IHC)

### Product Details

Immunogen:	The immunogen is a synthetic peptide directed towards the C terminal region of human CLIC5
Sequence:	YRNYDIPAEM TGLWRYLKNA YARDEFTNTC AADSEIELAY ADVAKRLSRS
Predicted Reactivity:	Cow: 100%, Dog: 93%, Guinea Pig: 100%, Horse: 100%, Human: 100%, Mouse: 93%, Rabbit: 100%, Rat: 100%, Zebrafish: 92%
Characteristics:	This is a rabbit polyclonal antibody against CLIC5. It was validated on Western Blot and immunohistochemistry.
Purification:	Protein A purified

### Target Details

Target:	CLIC5
---------	-------

## Target Details

---

Alternative Name:	CLIC5 ( <a href="#">CLIC5 Products</a> )
Background:	<p>Chloride intracellular channels are involved in chloride ion transport within various subcellular compartments. CLIon Channel5 specifically associates with the cytoskeleton of placenta microvilli. Chloride intracellular channels are involved in chloride ion transport within various subcellular compartments. CLIon Channel5 specifically associates with the cytoskeleton of placenta microvilli. [supplied by OMIM].</p> <p>Alias Symbols: MST130, MSTP130</p> <p>Protein Interaction Partner: SRPK1, FN1, IQGAP1, GSN, EZR, ACTA1, ACTN1,</p> <p>Protein Size: 251</p>
Molecular Weight:	28 kDa
Gene ID:	53405
NCBI Accession:	<a href="#">NM_016929</a> , <a href="#">NP_058625</a>
UniProt:	<a href="#">Q9NZA1</a>
Pathways:	<a href="#">Sensory Perception of Sound</a>

## Application Details

---

Application Notes:	Optimal working dilutions should be determined experimentally by the investigator.
Comment:	Antigen size: 251 AA
Restrictions:	For Research Use only

## Handling

---

Format:	Liquid
Concentration:	Lot specific
Buffer:	Liquid. Purified antibody supplied in 1x PBS buffer with 0.09 % (w/v) sodium azide and 2 % sucrose.
Preservative:	Sodium azide
Precaution of Use:	This product contains Sodium azide: a POISONOUS AND HAZARDOUS SUBSTANCE which should be handled by trained staff only.
Handling Advice:	Avoid repeated freeze-thaw cycles.
Storage:	-20 °C

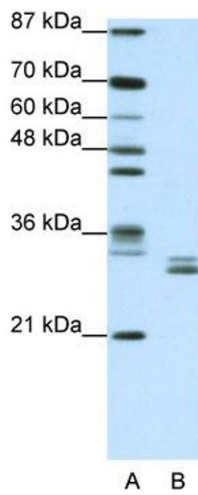
## Handling

Storage Comment: For short term use, store at 2-8°C up to 1 week. For long term storage, store at -20°C in small aliquots to prevent freeze-thaw cycles.

## Publications

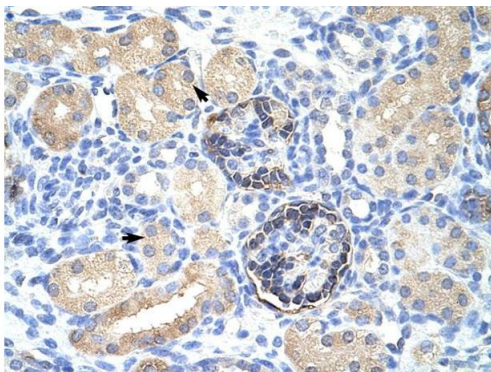
Product cited in: Tavasoli, Al-Momany, Wang, Li, Edwards, Ballermann: "Both CLIC4 and CLIC5A activate ERM proteins in glomerular endothelium." in: **American journal of physiology. Renal physiology**, Vol. 311, Issue 5, pp. F945-F957, (2016) ([PubMed](#)).

## Images



### Western Blotting

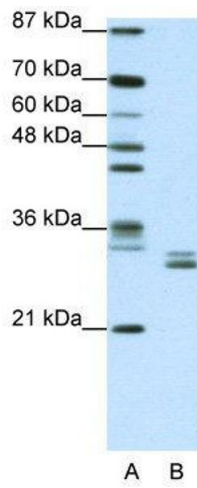
**Image 1.** WB Suggested Anti-CLIC5 Antibody Titration: 1.25ug/ml Positive Control: Jurkat cell lysate There is BioGPS gene expression data showing that CLIC5 is expressed in Jurkat



Rabbit Anti-CLIC5 Antibody  
Catalog Number: ARP35263  
Lot Number: QC9589  
Paraffin Embedded Tissue: Human Kidney  
Cells with Positive label: Epithelial cells of renal tubule (Indicated with Arrows)  
Antibody Concentration: 4.0-8.0 µg/ml  
Magnification: 400X

### Immunohistochemistry

**Image 2.** Human kidney



### Western Blotting

#### **Image 3.** WB Suggested Anti-CLIC5

Antibody Titration: 1.25 µg/mL

Positive Control: Jurkat cell lysate

There is BioGPS gene expression data showing that CLIC5 is expressed in Jurkat