

Datasheet for ABIN2776222 **anti-TPCN1 antibody (N-Term)**



[Go to Product page](#)

3 Images

Overview

Quantity:	100 µL
Target:	TPCN1
Binding Specificity:	N-Term
Reactivity:	Human, Mouse, Rat, Zebrafish (Danio rerio), Cow, Dog, Guinea Pig, Horse, Rabbit
Host:	Rabbit
Clonality:	Polyclonal
Conjugate:	This TPCN1 antibody is un-conjugated
Application:	Western Blotting (WB)

Product Details

Immunogen:	The immunogen is a synthetic peptide directed towards the N terminal region of human TPCN1
Sequence:	YQEAAIYLQE GENNDKFFTH PKDAKALAAY LFAHNHLFY L MELATALLLL
Predicted Reactivity:	Cow: 100%, Dog: 100%, Guinea Pig: 100%, Horse: 100%, Human: 100%, Mouse: 93%, Rabbit: 100%, Rat: 100%, Zebrafish: 100%
Characteristics:	This is a rabbit polyclonal antibody against TPCN1. It was validated on Western Blot using a cell lysate as a positive control.
Purification:	Affinity Purified

Target Details

Target:	TPCN1
---------	-------

Target Details

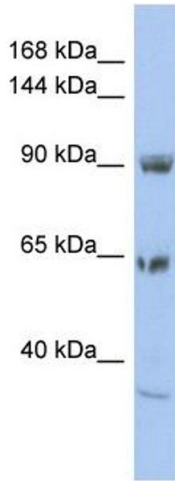
Alternative Name:	TPCN1 (TPCN1 Products)
Background:	<p>TPCN1 may function as one of the major voltage-gated Ca²⁺ channel (VDCC) across the plasma membrane. Voltage-gated Ca(2+) and Na+ channels have 4 homologous domains, each containing 6 transmembrane segments, S1 to S6. TPCN1 is similar to these channels, but it has only 2 domains containing S1 to S6 (Ishibashi et al., 2000 [PubMed 10753632]). [supplied by OMIM].</p> <p>Alias Symbols: FLJ20612, KIAA1169, TPC1</p> <p>Protein Size: 816</p>
Molecular Weight:	94 kDa
Gene ID:	53373
NCBI Accession:	NM_017901 , NP_060371
UniProt:	Q9ULQ1

Application Details

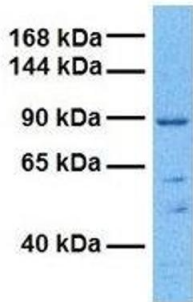
Application Notes:	Optimal working dilutions should be determined experimentally by the investigator.
Comment:	Antigen size: 816 AA
Restrictions:	For Research Use only

Handling

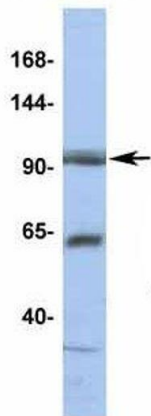
Format:	Liquid
Concentration:	Lot specific
Buffer:	Liquid. Purified antibody supplied in 1x PBS buffer with 0.09 % (w/v) sodium azide and 2 % sucrose.
Preservative:	Sodium azide
Precaution of Use:	This product contains Sodium azide: a POISONOUS AND HAZARDOUS SUBSTANCE which should be handled by trained staff only.
Handling Advice:	Avoid repeated freeze-thaw cycles.
Storage:	-20 °C
Storage Comment:	For short term use, store at 2-8°C up to 1 week. For long term storage, store at -20°C in small aliquots to prevent freeze-thaw cycles.



TPCN1



TPCN1



Western Blotting

Image 1. WB Suggested Anti-TPCN1 Antibody Titration: 0.2-1 ug/ml ELISA Titer: 1:62500 Positive Control: HT1080 cell lysate

Western Blotting

Image 2. Host: Rabbit Target Name: TPCN1 Sample Tissue: Human 293T Antibody Dilution: 1.0ug/ml

Western Blotting

Image 3. Host: Rabbit Target Name: TPCN1 Sample Type: HT1080 Antibody Dilution: 1.0ug/ml