

Datasheet for ABIN2776225
anti-TRPV6 antibody (Middle Region)

3 Images

[Go to Product page](#)

Overview

Quantity:	100 µL
Target:	TRPV6
Binding Specificity:	Middle Region
Reactivity:	Human, Mouse, Rat, Rabbit, Dog, Guinea Pig, Horse
Host:	Rabbit
Clonality:	Polyclonal
Conjugate:	This TRPV6 antibody is un-conjugated
Application:	Western Blotting (WB), Immunohistochemistry (IHC)

Product Details

Immunogen:	The immunogen is a synthetic peptide corresponding to a region of Rat
Sequence:	TEIDSSGDDQ SLLELIVTTK KREARQILDQ TPVKELVSLK WKRYGRPYFC
Predicted Reactivity:	Dog: 93%, Guinea Pig: 92%, Horse: 93%, Human: 100%, Mouse: 86%, Rabbit: 93%, Rat: 93%
Characteristics:	This is a rabbit polyclonal antibody against Trpv6. It was validated on Western Blot.
Purification:	Affinity Purified

Target Details

Target:	TRPV6
Alternative Name:	Trpv6 (TRPV6 Products)
Background:	Trpv6 is a Ca(2+)-sensing Ca(2+) channel.

Target Details

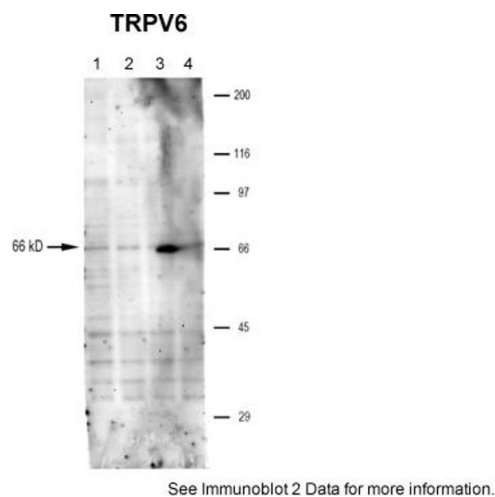
	Alias Symbols: CaT1, Ecac2, Otrpc3 Protein Size: 727
Molecular Weight:	83 kDa
Gene ID:	114246
NCBI Accession:	NM_053686 , NP_446138
UniProt:	Q9R186
Pathways:	TCR Signaling

Application Details

Application Notes:	Optimal working dilutions should be determined experimentally by the investigator.
Comment:	Antigen size: 727 AA
Restrictions:	For Research Use only

Handling

Format:	Liquid
Concentration:	Lot specific
Buffer:	Liquid. Purified antibody supplied in 1x PBS buffer with 0.09 % (w/v) sodium azide and 2 % sucrose.
Preservative:	Sodium azide
Precaution of Use:	This product contains Sodium azide: a POISONOUS AND HAZARDOUS SUBSTANCE which should be handled by trained staff only.
Handling Advice:	Avoid repeated freeze-thaw cycles.
Storage:	-20 °C
Storage Comment:	For short term use, store at 2-8°C up to 1 week. For long term storage, store at -20°C in small aliquots to prevent freeze-thaw cycles.



Western Blotting

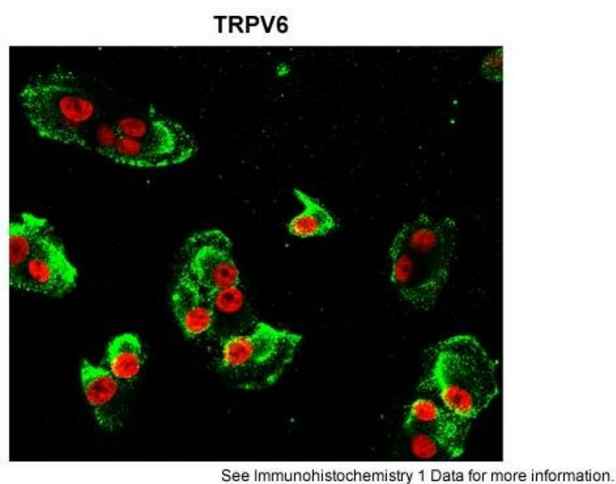
Image 1. Sample Type: hRetinal pigment epithelial cells, 4 individual donors (20ug)

Primary Dilution: 1:1000

Secondary Antibody: goat anti-rabbit-AP

Secondary Dilution: 1:2000

Image Submitted by: Brian Kennedy
Indiana University Northwest .



Immunohistochemistry

Image 2. Sample Type: hRetinal pigment epithelial cells

Green: primary

Red: nuclear

Primary Dilution: 1:200

Secondary Antibody: goat anti-rabbit-Alexa 488

Secondary Dilution: 1:500

Image Submitted by: Brian Kennedy
Indiana University Northwest .



Western Blotting

Image 3. Trpv6 antibody - middle region validated by WB using Rat Brain lysate at 1ug/ml.