

Datasheet for ABIN2776242
anti-CLCN6 antibody (C-Term)[Go to Product page](#)

2 Images

2 Publications

Overview

Quantity:	100 µL
Target:	CLCN6
Binding Specificity:	C-Term
Reactivity:	Human, Rat, Mouse, Rabbit, Dog, Cow, Guinea Pig, Horse
Host:	Rabbit
Clonality:	Polyclonal
Conjugate:	This CLCN6 antibody is un-conjugated
Application:	Western Blotting (WB)

Product Details

Immunogen:	The immunogen is a synthetic peptide directed towards the C terminal region of human CLCN6
Sequence:	PQFQSISLRK IQFNFPYFRS DRDKRDFVSA GAAAGVAAAF GAPIGGTLFS
Predicted Reactivity:	Cow: 100%, Dog: 100%, Guinea Pig: 100%, Horse: 100%, Human: 100%, Mouse: 100%, Rabbit: 100%, Rat: 100%
Characteristics:	This is a rabbit polyclonal antibody against CLCN6. It was validated on Western Blot using a cell lysate as a positive control.
Purification:	Protein A purified

Target Details

Target:	CLCN6
---------	-------

Target Details

Alternative Name:	CLCN6 (CLCN6 Products)
Background:	<p>The CLCN family of voltage-dependent chloride channel genes comprises nine members (CLCN1-7, Ka and Kb) which demonstrate quite diverse functional characteristics while sharing significant sequence homology. Chloride channel 6 and 7 belong to a subbranch of this family. Chloride channel 6 has four different alternatively spliced transcript variants. This gene is in close vicinity to two other kidney-specific chloride channel genes, CLCNKA and CLCNKB.</p> <p>Alias Symbols: CLC-6</p> <p>Protein Interaction Partner: UBC, PPP2R1A,</p> <p>Protein Size: 353</p>
Molecular Weight:	39 kDa
Gene ID:	1185
NCBI Accession:	NM_021736 , NP_068504
UniProt:	Q5SNX3

Application Details

Application Notes:	Optimal working dilutions should be determined experimentally by the investigator.
Comment:	Antigen size: 353 AA
Restrictions:	For Research Use only

Handling

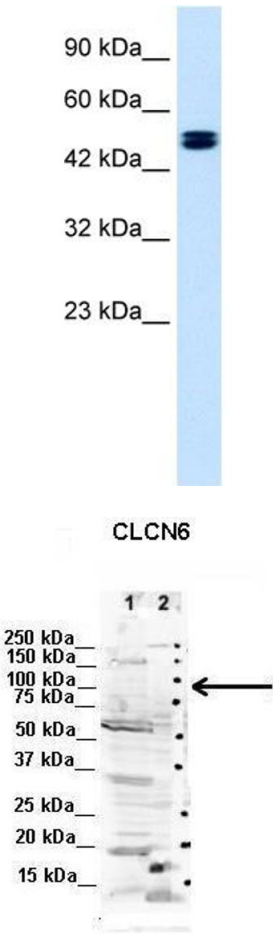
Format:	Liquid
Concentration:	Lot specific
Buffer:	Liquid. Purified antibody supplied in 1x PBS buffer with 0.09 % (w/v) sodium azide and 2 % sucrose.
Preservative:	Sodium azide
Precaution of Use:	This product contains Sodium azide: a POISONOUS AND HAZARDOUS SUBSTANCE which should be handled by trained staff only.
Handling Advice:	Avoid repeated freeze-thaw cycles.
Storage:	-20 °C
Storage Comment:	For short term use, store at 2-8°C up to 1 week. For long term storage, store at -20°C in small

aliquots to prevent freeze-thaw cycles.

Publications

Product cited in: Braun, Sponder, Pieper, Aschenbach, Deiner: "GABA selectively increases mucin-1 expression in isolated pig jejunum." in: **Genes & nutrition**, Vol. 10, Issue 6, pp. 47, (2015) ([PubMed](#)).

Images



Western Blotting

Image 1. WB Suggested Anti-CLCN6 Antibody Titration: 1.25ug/ml ELISA Titer: 1:62500 Positive Control: Jurkat cell lysate

Western Blotting

Image 2. Lanes: 1. Human NT-2 cells (60ug) lysate 2. Mouse WT brain extract (80ug) Primary Antibody Dilution: 2ug/ml Secondary Antibody: IRDye 800CW goat anti-rabbit from Li-COR Bioscience Secondary Antibody Dilution: 1: 20,000 Gene Name: CLCN6 Submitted by: Dr. Yuzhi Chen, University of Arkansas for Medical Science

See Immunoblot 2 Data and Customer Feedback for more information