



[Go to Product page](#)

Datasheet for ABIN2776248

anti-GABRE antibody (Middle Region)

1 Image

3 Publications

Overview

Quantity:	100 µL
Target:	GABRE
Binding Specificity:	Middle Region
Reactivity:	Human, Guinea Pig, Mouse, Rabbit, Rat
Host:	Rabbit
Clonality:	Polyclonal
Conjugate:	This GABRE antibody is un-conjugated
Application:	Western Blotting (WB)

Product Details

Immunogen:	The immunogen is a synthetic peptide directed towards the middle region of human GABRE
Sequence:	KNSWKLFQFD FTGVSNKTEI ITTPVGDFMV MTIFFNVSRR FGYVAFQNYV
Predicted Reactivity:	Guinea Pig: 79%, Human: 100%, Mouse: 85%, Rabbit: 86%, Rat: 92%
Characteristics:	This is a rabbit polyclonal antibody against GABRE. It was validated on Western Blot using a cell lysate as a positive control.
Purification:	Affinity Purified

Target Details

Target:	GABRE
Alternative Name:	GABRE (GABRE Products)

Target Details

Background: GABRE belongs to the ligand-gated ionic channel (TC 1.A.9) family. It encodes the gamma-aminobutyric acid (GABA) A receptor which is a multisubunit chloride channel that mediates the fastest inhibitory synaptic transmission in the central nervous system. This gene encodes an epsilon subunit. It is mapped to chromosome Xq28 in a cluster comprised of genes encoding alpha 3, beta 4 and theta subunits of the same receptor. Alternatively spliced transcript variants encoding different isoforms have been identified.

Protein Size: 393

Molecular Weight: 43 kDa

Gene ID: 2564

NCBI Accession: [NM_021984](#), [NP_068819](#)

Pathways: [Synaptic Membrane](#)

Application Details

Application Notes: Optimal working dilutions should be determined experimentally by the investigator.

Comment: Antigen size: 393 AA

Restrictions: For Research Use only

Handling

Format: Liquid

Concentration: Lot specific

Buffer: Liquid. Purified antibody supplied in 1x PBS buffer with 0.09 % (w/v) sodium azide and 2 % sucrose.

Preservative: Sodium azide

Precaution of Use: This product contains Sodium azide: a POISONOUS AND HAZARDOUS SUBSTANCE which should be handled by trained staff only.

Handling Advice: Avoid repeated freeze-thaw cycles.

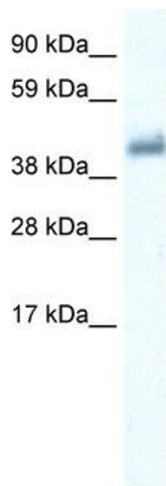
Storage: -20 °C

Storage Comment: For short term use, store at 2-8°C up to 1 week. For long term storage, store at -20°C in small aliquots to prevent freeze-thaw cycles.

Publications

Product cited in: Mullins, Crawford, Khuder, Hernandez, Yoon, Willey: "CEBPG transcription factor correlates with antioxidant and DNA repair genes in normal bronchial epithelial cells but not in individuals with bronchogenic carcinoma." in: **BMC cancer**, Vol. 5, pp. 141, (2005) ([PubMed](#)).

Images



Western Blotting

Image 1. WB Suggested Anti-GABRE Antibody Titration: 0.2-1 ug/ml ELISA Titer: 1:312500 Positive Control: Human Placenta