

Datasheet for ABIN2776263
anti-KCTD10 antibody (N-Term)[Go to Product page](#)

1 Image

Overview

| | |
|----------------------|--|
| Quantity: | 100 µL |
| Target: | KCTD10 |
| Binding Specificity: | N-Term |
| Reactivity: | Human, Mouse, Rat, Dog, Rabbit, Cow, Horse, Zebrafish (Danio rerio), Guinea Pig, Pig |
| Host: | Rabbit |
| Clonality: | Polyclonal |
| Conjugate: | This KCTD10 antibody is un-conjugated |
| Application: | Western Blotting (WB) |

Product Details

| | |
|-----------------------|--|
| Immunogen: | The immunogen is a synthetic peptide directed towards the N terminal region of human KCTD10 |
| Sequence: | MEEMSGESVV SSAVPAAATR TTSFKGTSPS SKYVKLNVGG ALYYTTMQTL |
| Predicted Reactivity: | Cow: 100%, Dog: 100%, Guinea Pig: 93%, Horse: 100%, Human: 100%, Mouse: 93%, Pig: 100%, Rabbit: 100%, Rat: 93%, Zebrafish: 93% |
| Characteristics: | This is a rabbit polyclonal antibody against KCTD10. It was validated on Western Blot using a cell lysate as a positive control. |
| Purification: | Protein A purified |

Target Details

| | |
|---------|--------|
| Target: | KCTD10 |
|---------|--------|

Target Details

| | |
|-------------------|---|
| Alternative Name: | KCTD10 (KCTD10 Products) |
| Background: | <p>KCTD10, a rat potassium channel tetramerisation domain-containing 10 gene is a novel member of the polymerase delta-interacting protein 1 (PDIP1) gene family. KCTD10 shares significant similarity in amino acid sequence to PDIP1 and can interact with the small subunit of DNA polymerase delta and PCNA as PDIP1 does. Like PDIP1, the expression of KCTD10 gene can be induced by TNF-alpha in NIH3T3 cells.</p> <p>Alias Symbols: ULRO61, MSTP028</p> <p>Protein Interaction Partner: UBC, RNF2, FMNL1, CUL3, PCNA, DCUN1D1, COPS5, COPS6, NEDD8, TNFAIP1, SH3KBP1, ITSN2, Cd2ap, KCTD13, USP25, USP13, ATXN3,</p> <p>Protein Size: 313</p> |
| Molecular Weight: | 34 kDa |
| Gene ID: | 83892 |
| NCBI Accession: | NM_031954 , NP_114160 |
| UniProt: | Q9H3F6 |

Application Details

| | |
|--------------------|--|
| Application Notes: | Optimal working dilutions should be determined experimentally by the investigator. |
| Comment: | Antigen size: 313 AA |
| Restrictions: | For Research Use only |

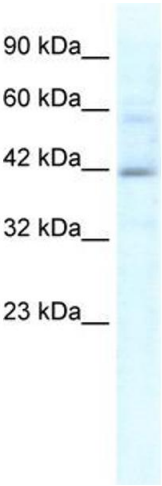
Handling

| | |
|--------------------|--|
| Format: | Liquid |
| Concentration: | Lot specific |
| Buffer: | Liquid. Purified antibody supplied in 1x PBS buffer with 0.09 % (w/v) sodium azide and 2 % sucrose. |
| Preservative: | Sodium azide |
| Precaution of Use: | This product contains Sodium azide: a POISONOUS AND HAZARDOUS SUBSTANCE which should be handled by trained staff only. |
| Handling Advice: | Avoid repeated freeze-thaw cycles. |
| Storage: | -20 °C |

Handling

Storage Comment: For short term use, store at 2-8°C up to 1 week. For long term storage, store at -20°C in small aliquots to prevent freeze-thaw cycles.

Images



Western Blotting

Image 1. WB Suggested Anti-KCTD10 Antibody Titration: 1.25ug/ml ELISA Titer: 1:312500 Positive Control: Jurkat cell lysate