



[Go to Product page](#)

Datasheet for ABIN2776271

anti-CLIC6 antibody (Middle Region)

2 Images

Overview

| | |
|----------------------|--------------------------------------|
| Quantity: | 100 µL |
| Target: | CLIC6 |
| Binding Specificity: | Middle Region |
| Reactivity: | Human, Mouse, Rat, Rabbit, Pig |
| Host: | Rabbit |
| Clonality: | Polyclonal |
| Conjugate: | This CLIC6 antibody is un-conjugated |
| Application: | Western Blotting (WB) |

Product Details

| | |
|-----------------------|---|
| Immunogen: | The immunogen is a synthetic peptide directed towards the middle region of human CLIC6 |
| Sequence: | RREDGEASEP RALGQEHDT LFKAGYDGE SIGNCPFSQR LFMILWLKGV |
| Predicted Reactivity: | Human: 100%, Mouse: 100%, Pig: 100%, Rabbit: 100%, Rat: 100% |
| Characteristics: | This is a rabbit polyclonal antibody against CLIC6. It was validated on Western Blot using a cell lysate as a positive control. |
| Purification: | Affinity Purified |

Target Details

| | |
|-------------------|--|
| Target: | CLIC6 |
| Alternative Name: | CLIC6 (CLIC6 Products) |

Target Details

| | |
|-------------------|---|
| Background: | CLIon Channel6 encodes a member of the chloride intracellular channel family of proteins. The gene is part of a large triplicated region found on chromosomes 1, 6, and 21. Alias Symbols: CLIC1L Protein Interaction Partner: DRD3, DRD2, DRD4, Protein Size: 686 |
| Molecular Weight: | 75 kDa |
| Gene ID: | 54102 |
| NCBI Accession: | NM_053277 , NP_444507 |

Application Details

| | |
|--------------------|--|
| Application Notes: | Optimal working dilutions should be determined experimentally by the investigator. |
| Comment: | Antigen size: 686 AA |
| Restrictions: | For Research Use only |

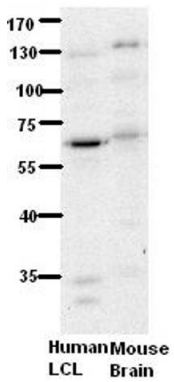
Handling

| | |
|--------------------|---|
| Format: | Liquid |
| Concentration: | Lot specific |
| Buffer: | Liquid. Purified antibody supplied in 1x PBS buffer with 0.09 % (w/v) sodium azide and 2 % sucrose. |
| Preservative: | Sodium azide |
| Precaution of Use: | This product contains Sodium azide: a POISONOUS AND HAZARDOUS SUBSTANCE which should be handled by trained staff only. |
| Handling Advice: | Avoid repeated freeze-thaw cycles. |
| Storage: | -20 °C |
| Storage Comment: | For short term use, store at 2-8°C up to 1 week. For long term storage, store at -20°C in small aliquots to prevent freeze-thaw cycles. |



Western Blotting

Image 1. WB Suggested Anti-CLIC6 Antibody Titration: 0.2-1 ug/ml ELISA Titer: 1:2500 Positive Control: Jurkat cell lysate



(ARP35388_P050) CLIC6

Western Blot
Human LCL and Mouse Brain
Dilution: 1 to 500
5% Milk
Application data in forum

Submitted by:
Katheleen Gardiner
University of Colorado Denver

Image 2.