

Datasheet for ABIN2776278
anti-KCTD12 antibody (C-Term)[Go to Product page](#)

1 Image

Overview

Quantity:	100 µL
Target:	KCTD12
Binding Specificity:	C-Term
Reactivity:	Human, Mouse, Rat, Cow, Dog, Horse, Pig, Rabbit, Guinea Pig, Zebrafish (Danio rerio)
Host:	Rabbit
Clonality:	Polyclonal
Conjugate:	This KCTD12 antibody is un-conjugated
Application:	Western Blotting (WB)

Product Details

Immunogen:	The immunogen is a synthetic peptide directed towards the C-terminal region of MOUSE Kctd12
Sequence:	PDRPPERYTS RYYLKFNFLQ QAFDKLSESG FHMVACSSTG TCAFASSTDQ
Predicted Reactivity:	Cow: 100%, Dog: 100%, Guinea Pig: 91%, Horse: 100%, Human: 100%, Mouse: 100%, Pig: 100%, Rabbit: 100%, Rat: 93%, Zebrafish: 93%
Characteristics:	This is a rabbit polyclonal antibody against Kctd12. It was validated on Western Blot.
Purification:	Affinity Purified

Target Details

Target:	KCTD12
---------	--------

Target Details

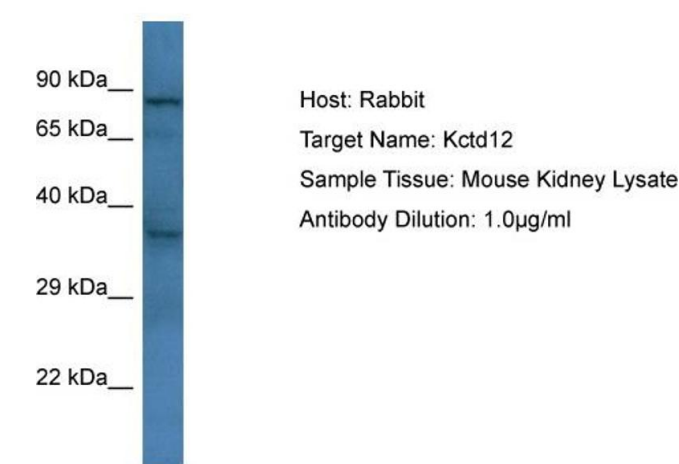
Alternative Name:	Kctd12 (KCTD12 Products)
Background:	<p>Kctd12 is an auxiliary subunit of GABA-B receptors that determine the pharmacology and kinetics of the receptor response. It increases agonist potency and markedly alter the G-protein signaling of the receptors by accelerating onset and promoting desensitization.</p> <p>Alias Symbols: AU046135, AW538430, Pfet1, Pfetin</p> <p>Protein Size: 327</p>
Molecular Weight:	35 kDa
Gene ID:	239217
NCBI Accession:	NM_177715 , NP_808383
UniProt:	Q6WVG3
Pathways:	Synaptic Membrane , Regulation of G-Protein Coupled Receptor Protein Signaling

Application Details

Application Notes:	Optimal working dilution should be determined by the investigator.
Restrictions:	For Research Use only

Handling

Format:	Liquid
Concentration:	1 mg/mL
Buffer:	Liquid. Purified antibody supplied in 1x PBS buffer with 0.09 % (w/v) sodium azide and 2 % sucrose.
Preservative:	Sodium azide
Precaution of Use:	This product contains Sodium azide: a POISONOUS AND HAZARDOUS SUBSTANCE which should be handled by trained staff only.
Handling Advice:	Avoid repeat freeze-thaw cycles.
Storage:	-20 °C
Storage Comment:	For short term use, store at 2-8°C up to 1 week. For long term storage, store at -20°C in small aliquots to prevent freeze-thaw cycles.



Western Blotting

Image 1. Host: Rabbit Target Name: Kctd12 Sample Type: Mouse Kidney lysates Antibody Dilution: 1.0ug/ml