

Datasheet for ABIN2776280
anti-CHRFAM7A antibody (N-Term)[2 Images](#)[1 Publication](#)[Go to Product page](#)

Overview

Quantity:	100 µL
Target:	CHRFAM7A
Binding Specificity:	N-Term
Reactivity:	Human, Mouse, Rat, Dog, Zebrafish (Danio rerio), Guinea Pig, Cow, Horse, Rabbit
Host:	Rabbit
Clonality:	Polyclonal
Conjugate:	This CHRFAM7A antibody is un-conjugated
Application:	Western Blotting (WB)

Product Details

Immunogen:	The immunogen is a synthetic peptide directed towards the N terminal region of human CHRFAM7A
Sequence:	QFQLLIQHLW IAANCDIADE RFDATFHTNV LVNSSGHCQY LPPGIFKSSC
Predicted Reactivity:	Cow: 100%, Dog: 100%, Guinea Pig: 100%, Horse: 100%, Human: 100%, Mouse: 100%, Rabbit: 100%, Rat: 100%, Zebrafish: 100%
Characteristics:	This is a rabbit polyclonal antibody against CHRFAM7A. It was validated on Western Blot using a cell lysate as a positive control.
Purification:	Affinity Purified

Target Details

Target:	CHRFAM7A
---------	----------

Target Details

Alternative Name:	CHRFAM7A (CHRFAM7A Products)
Background:	<p>The nicotinic acetylcholine receptors (nAChRs) are members of a superfamily of ligand-gated ion channels that mediate fast signal transmission at synapses. The family member CHRNA7 is located on chromosome 15 in a region associated with several neuropsychiatric disorders.</p> <p>CHRFAM7A is a hybrid between CHRNA7 and FAM7A.</p> <p>Alias Symbols: D-10, CHRNA7, CHRNA7-DR1</p> <p>Protein Size: 412</p>
Molecular Weight:	45 kDa
Gene ID:	89832
NCBI Accession:	NM_139320 , NP_647536
UniProt:	Q494W8

Application Details

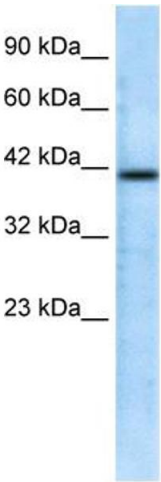
Application Notes:	Optimal working dilutions should be determined experimentally by the investigator.
Comment:	Antigen size: 412 AA
Restrictions:	For Research Use only

Handling

Format:	Liquid
Concentration:	Lot specific
Buffer:	Liquid. Purified antibody supplied in 1x PBS buffer with 0.09 % (w/v) sodium azide and 2 % sucrose.
Preservative:	Sodium azide
Precaution of Use:	This product contains Sodium azide: a POISONOUS AND HAZARDOUS SUBSTANCE which should be handled by trained staff only.
Handling Advice:	Avoid repeated freeze-thaw cycles.
Storage:	-20 °C
Storage Comment:	For short term use, store at 2-8°C up to 1 week. For long term storage, store at -20°C in small aliquots to prevent freeze-thaw cycles.

Product cited in: Tilley, Harvey, Heguy, Hackett, Wang, OConnor, Crystal: "Down-regulation of the notch pathway in human airway epithelium in association with smoking and chronic obstructive pulmonary disease." in: **American journal of respiratory and critical care medicine**, Vol. 179, Issue 6, pp. 457-66, (2009) ([PubMed](#)).

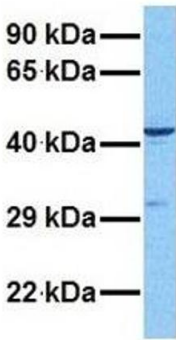
Images



Western Blotting

Image 1. WB Suggested Anti-CHRFAM7A Antibody Titration: 0.2-1 ug/ml ELISA Titer: 1:62500 Positive Control: Jurkat cell lysate CHRFAM7A is supported by BioGPS gene expression data to be expressed in Jurkat

CHRFAM7A



Western Blotting

Image 2. Host: Rabbit Target Name: CHRFAM7A Sample Tissue: Human MCF7 Antibody Dilution: 1.0ug/ml