



Datasheet for ABIN2776286  
**anti-KCTD18 antibody (N-Term)**



[Go to Product page](#)

1 Image

Overview

Quantity:	100 µL
Target:	KCTD18
Binding Specificity:	N-Term
Reactivity:	Human, Rat, Mouse, Rabbit, Pig, Cow, Dog, Horse
Host:	Rabbit
Clonality:	Polyclonal
Conjugate:	This KCTD18 antibody is un-conjugated
Application:	Western Blotting (WB)

Product Details

Immunogen:	The immunogen is a synthetic peptide directed towards the N terminal region of human KCTD18
Sequence:	LHYLNTSGAS CESRIIGVYA TKTDGTDIAIE KQLGGRIHSK GIFKREAGNN
Predicted Reactivity:	Cow: 93%, Dog: 93%, Horse: 93%, Human: 100%, Mouse: 93%, Pig: 93%, Rabbit: 86%, Rat: 93%
Characteristics:	This is a rabbit polyclonal antibody against KCTD18. It was validated on Western Blot using a cell lysate as a positive control.
Purification:	Protein A purified

Target Details

Target:	KCTD18
---------	--------

## Target Details

---

Alternative Name:	KCTD18 ( <a href="#">KCTD18 Products</a> )
Background:	The function of Anti-KCTD18 has not yet been determined. Alias Symbols: 6530404F10Rik Protein Interaction Partner: APP, COPS5, COPS6, CUL3, UBC, Protein Size: 426
Molecular Weight:	47 kDa
Gene ID:	130535
NCBI Accession:	<a href="#">NM_152387</a> , <a href="#">NP_689600</a>
UniProt:	<a href="#">Q6PI47</a>

## Application Details

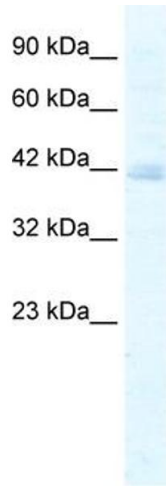
---

Application Notes:	Optimal working dilutions should be determined experimentally by the investigator.
Comment:	Antigen size: 426 AA
Restrictions:	For Research Use only

## Handling

---

Format:	Liquid
Concentration:	Lot specific
Buffer:	Liquid. Purified antibody supplied in 1x PBS buffer with 0.09 % (w/v) sodium azide and 2 % sucrose.
Preservative:	Sodium azide
Precaution of Use:	This product contains Sodium azide: a POISONOUS AND HAZARDOUS SUBSTANCE which should be handled by trained staff only.
Handling Advice:	Avoid repeated freeze-thaw cycles.
Storage:	-20 °C
Storage Comment:	For short term use, store at 2-8°C up to 1 week. For long term storage, store at -20°C in small aliquots to prevent freeze-thaw cycles.



### Western Blotting

**Image 1.** WB Suggested Anti-KCTD18 Antibody Titration:  
5.0ug/ml ELISA Titer: 1:312500 Positive Control: Jurkat cell lysate