

Datasheet for ABIN2776287
anti-KCTD7 antibody (N-Term)[Go to Product page](#)

4 Images

Overview

Quantity:	100 µL
Target:	KCTD7
Binding Specificity:	N-Term
Reactivity:	Human, Rat, Mouse, Pig, Rabbit, Cow, Dog, Horse
Host:	Rabbit
Clonality:	Polyclonal
Conjugate:	This KCTD7 antibody is un-conjugated
Application:	Western Blotting (WB)

Product Details

Immunogen:	The immunogen is a synthetic peptide directed towards the N terminal region of human KCTD7
Sequence:	VVVTGREPDS RRQDGAMSSS DAEDDFLEPA TPTATQAGHA LPLLPQEFPE
Predicted Reactivity:	Cow: 100%, Dog: 100%, Horse: 100%, Human: 100%, Mouse: 100%, Pig: 100%, Rabbit: 100%, Rat: 100%
Characteristics:	This is a rabbit polyclonal antibody against KCTD7. It was validated on Western Blot using a cell lysate as a positive control.
Purification:	Affinity Purified

Target Details

Target:	KCTD7
---------	-------

Target Details

Alternative Name:	KCTD7 (KCTD7 Products)
Background:	<p>The KCTD gene family, including KCTD7, encode predicted proteins that contain N-terminal domain that is homologous to the T1 domain in voltage-gated potassium channels (see KCNA1, MIM 176260). KCTD7 displays a primary sequence and hydropathy profile indicating intracytoplasmic localization. EST database analysis showed that KCTD7 is expressed in human and mouse brain. The KCTD gene family, including KCTD7, encode predicted proteins that contain N-terminal domain that is homologous to the T1 domain in voltage-gated potassium channels (see KCNA1, MIM 176260). KCTD7 displays a primary sequence and hydropathy profile indicating intracytoplasmic localization. EST database analysis showed that KCTD7 is expressed in human and mouse brain (Van Bogaert et al., 2007 [PubMed 17455289]). [supplied by OMIM].</p> <p>Alias Symbols: FLJ32069, EPM3</p> <p>Protein Interaction Partner: COPS6, CUL3, UBC,</p> <p>Protein Size: 289</p>
Molecular Weight:	33 kDa
Gene ID:	154881
NCBI Accession:	NM_153033 , NP_694578
UniProt:	Q96MP8

Application Details

Application Notes:	Optimal working dilutions should be determined experimentally by the investigator.
Comment:	Antigen size: 289 AA
Restrictions:	For Research Use only

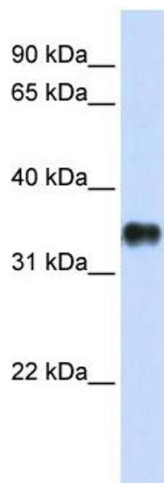
Handling

Format:	Liquid
Concentration:	Lot specific
Buffer:	Liquid. Purified antibody supplied in 1x PBS buffer with 0.09 % (w/v) sodium azide and 2 % sucrose.
Preservative:	Sodium azide
Precaution of Use:	This product contains Sodium azide: a POISONOUS AND HAZARDOUS SUBSTANCE which

Handling

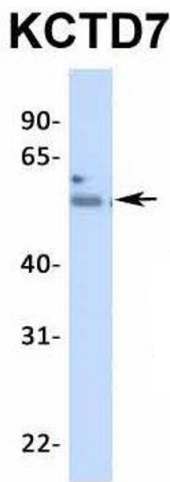
	should be handled by trained staff only.
Handling Advice:	Avoid repeated freeze-thaw cycles.
Storage:	-20 °C
Storage Comment:	For short term use, store at 2-8°C up to 1 week. For long term storage, store at -20°C in small aliquots to prevent freeze-thaw cycles.

Images



Western Blotting

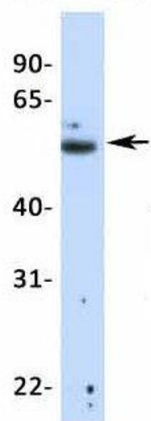
Image 1. WB Suggested Anti-KCTD7 Antibody Titration: 0.2-1 ug/ml ELISA Titer: 1:62500 Positive Control: Transfected 293T



Western Blotting

Image 2. Host: Rabbit Target Name: KCTD7 Sample Type: Human Fetal Heart Antibody Dilution: 1.0ug/ml

KCTD7



Western Blotting

Image 3. Host: Rabbit Target Name: KCTD7 Sample Type:
Human Fetal Lung Antibody Dilution: 1.0ug/ml

Please check the [product details page](#) for more images. Overall 4 images are available for ABIN2776287.