



Datasheet for ABIN2776289
anti-KCTD6 antibody (N-Term)



[Go to Product page](#)

3 Images

Overview

Quantity:	100 µL
Target:	KCTD6
Binding Specificity:	N-Term
Reactivity:	Human, Mouse, Rat, Cow, Dog, Guinea Pig, Horse, Rabbit, Zebrafish (Danio rerio)
Host:	Rabbit
Clonality:	Polyclonal
Conjugate:	This KCTD6 antibody is un-conjugated
Application:	Western Blotting (WB), Immunohistochemistry (IHC)

Product Details

Immunogen:	The immunogen is a synthetic peptide directed towards the N terminal region of human KCTD6
Sequence:	HLYTTSLTTL TRYPDSMLGA MFGGDFPTTR DPQGNFYFINR DGPLFRYVLN
Predicted Reactivity:	Cow: 93%, Dog: 93%, Guinea Pig: 93%, Horse: 93%, Human: 93%, Mouse: 93%, Rabbit: 93%, Rat: 93%, Zebrafish: 93%
Characteristics:	This is a rabbit polyclonal antibody against KCTD6. It was validated on Western Blot and immunohistochemistry.
Purification:	Protein A purified

Target Details

Target:	KCTD6
---------	-------

Target Details

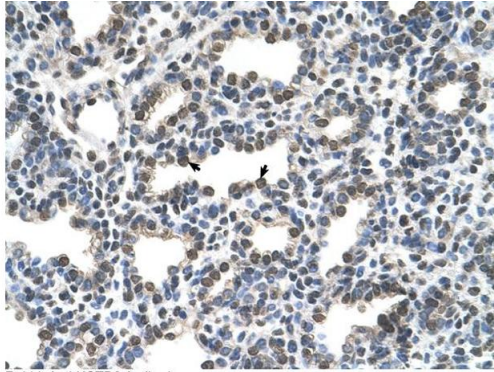
Alternative Name:	KCTD6 (KCTD6 Products)
Background:	<p>KCTD6 is a domain of potassium channel.</p> <p>Alias Symbols: MGC27385, KCASH3</p> <p>Protein Interaction Partner: GOLGA8F, GOLGA8EP, KCTD6, LNX1, FAM124B, GSDMD, C8orf33, ZCCHC10, PRPF31, PPIG, CDC23, CUL3, SDCBP, GRB7, EHHADH, CTNND1, ACTN3, ACTN1, HECW2, OBSCN, COPS5, UBC, ANK1, USP11,</p> <p>Protein Size: 237</p>
Molecular Weight:	28 kDa
Gene ID:	200845
NCBI Accession:	NM_153331 , NP_699162
UniProt:	Q8NC69

Application Details

Application Notes:	Optimal working dilutions should be determined experimentally by the investigator.
Comment:	Antigen size: 237 AA
Restrictions:	For Research Use only

Handling

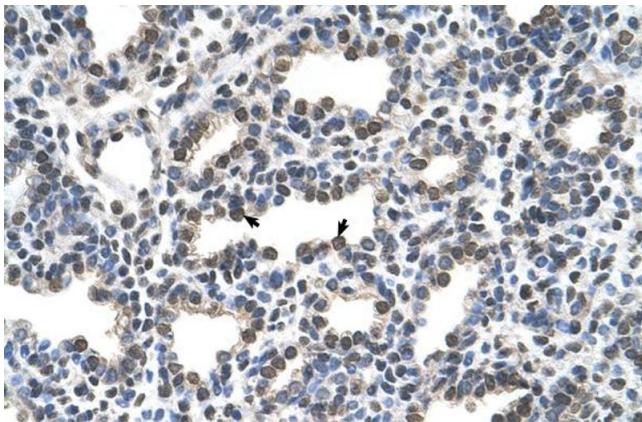
Format:	Liquid
Concentration:	Lot specific
Buffer:	Liquid. Purified antibody supplied in 1x PBS buffer with 0.09 % (w/v) sodium azide and 2 % sucrose.
Preservative:	Sodium azide
Precaution of Use:	This product contains Sodium azide: a POISONOUS AND HAZARDOUS SUBSTANCE which should be handled by trained staff only.
Handling Advice:	Avoid repeated freeze-thaw cycles.
Storage:	-20 °C
Storage Comment:	For short term use, store at 2-8°C up to 1 week. For long term storage, store at -20°C in small aliquots to prevent freeze-thaw cycles.



Rabbit Anti-KCTD6 Antibody
Catalog Number: ARP35425
Lot Number: QC4707
Paraffin Embedded Tissue: Human Lung
Cells with Positive label: Alveolar cells (Indicated with Arrows)
Antibody Concentration: 16.0 µg/ml
Magnification: 400X

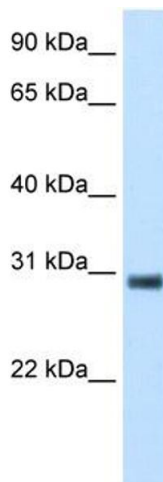
Immunohistochemistry

Image 1. Human Lung



Immunohistochemistry

Image 2. Human Lung



Western Blotting

Image 3. WB Suggested Anti-KCTD6 Antibody Titration:
5.0ug/ml ELISA Titer: 1:312500 Positive Control:
Transfected 293T