

Datasheet for ABIN2776299  
**anti-CATSPER2 antibody (N-Term)**[Go to Product page](#)

## 2 Images

## Overview

Quantity:	100 µL
Target:	CATSPER2
Binding Specificity:	N-Term
Reactivity:	Human, Rabbit, Cow, Horse, Rat, Dog, Pig
Host:	Rabbit
Clonality:	Polyclonal
Conjugate:	This CATSPER2 antibody is un-conjugated
Application:	Western Blotting (WB)

## Product Details

Immunogen:	The immunogen is a synthetic peptide directed towards the N terminal region of human CATSPER2
Sequence:	HLQGLSQAVP RHTIRELLDP SRQKKLVLGD QHQLVRFSIK PQRIEQISHA
Predicted Reactivity:	Cow: 93%, Dog: 92%, Horse: 93%, Human: 100%, Pig: 93%, Rabbit: 93%, Rat: 83%
Characteristics:	This is a rabbit polyclonal antibody against CATSPER2. It was validated on Western Blot using a cell lysate as a positive control.
Purification:	Affinity Purified

## Target Details

Target:	CATSPER2
---------	----------

## Target Details

Alternative Name:	CATSPER2 ( <a href="#">CATSPER2 Products</a> )
Background:	<p>Calcium ions play a primary role in the regulation of sperm motility. Anti-CATSPER2 belongs to a family of putative cation channels that are specific to spermatozoa and localize to the flagellum. The protein family features a single repeat with six membrane-spanning segments and a predicted calcium-selective pore region. A second, closely linked copy of this gene has been identified. Although multiple transcript variants encoding protein isoforms have been characterized, they seem to be only transcribed from this gene. Additional splice variants have been described but their full-length nature has not been determined.</p> <p>Alias Symbols: MGC33346</p> <p>Protein Size: 414</p>
Molecular Weight:	46 kDa
Gene ID:	117155
NCBI Accession:	<a href="#">NM_172096</a> , <a href="#">NP_742094</a>
UniProt:	<a href="#">Q96P56</a>

## Application Details

Application Notes:	Optimal working dilutions should be determined experimentally by the investigator.
Comment:	Antigen size: 414 AA
Restrictions:	For Research Use only

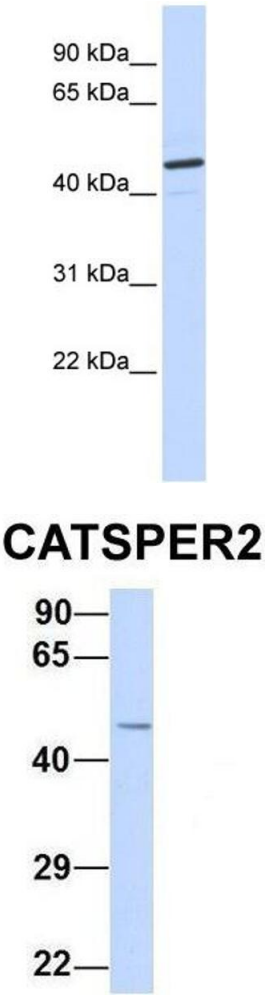
## Handling

Format:	Liquid
Concentration:	Lot specific
Buffer:	Liquid. Purified antibody supplied in 1x PBS buffer with 0.09 % (w/v) sodium azide and 2 % sucrose.
Preservative:	Sodium azide
Precaution of Use:	This product contains Sodium azide: a POISONOUS AND HAZARDOUS SUBSTANCE which should be handled by trained staff only.
Handling Advice:	Avoid repeated freeze-thaw cycles.
Storage:	-20 °C

Handling

Storage Comment: For short term use, store at 2-8°C up to 1 week. For long term storage, store at -20°C in small aliquots to prevent freeze-thaw cycles.

Images



**Western Blotting**

**Image 1.** WB Suggested Anti-CATSPER2 Antibody Titration: 0.2-1 ug/ml ELISA Titer: 1:62500 Positive Control: Human Placenta

**Western Blotting**

**Image 2.** Host: Rabbit Target Name: CATSPER2 Sample Type: Human 293T Antibody Dilution: 1.0ug/ml CATSPER2 is supported by BioGPS gene expression data to be expressed in HEK293T