

Datasheet for ABIN2776304
anti-KCNQ2 antibody (Middle Region)[Go to Product page](#)

3 Images

2 Publications

Overview

Quantity:	100 µL
Target:	KCNQ2
Binding Specificity:	Middle Region
Reactivity:	Human, Rat, Mouse, Dog, Cow, Guinea Pig, Horse, Rabbit, Zebrafish (Danio rerio)
Host:	Rabbit
Clonality:	Polyclonal
Conjugate:	This KCNQ2 antibody is un-conjugated
Application:	Western Blotting (WB), Immunohistochemistry (IHC)

Product Details

Immunogen:	The immunogen is a synthetic peptide directed towards the middle region of human KCNQ2
Sequence:	GNVFATSALR SLRFLQILRM IRMDRRGGTW KLLGSVVYAH SKELVTAWYI
Predicted Reactivity:	Cow: 100%, Dog: 100%, Guinea Pig: 100%, Horse: 100%, Human: 100%, Mouse: 100%, Rabbit: 93%, Rat: 100%, Zebrafish: 93%
Characteristics:	This is a rabbit polyclonal antibody against KCNQ2. It was validated on Western Blot and immunohistochemistry.
Purification:	Protein A purified

Target Details

Target:	KCNQ2
---------	-------

Target Details

Alternative Name:	KCNQ2 (KCNQ2 Products)
Background:	<p>The M channel is a slowly activating and deactivating potassium channel that plays a critical role in the regulation of neuronal excitability. The M channel is formed by the association of the protein encoded by the KCNQ2 gene and a related protein encoded by the KCNQ3 gene, both integral membrane proteins. M channel currents are inhibited by M1 muscarinic acetylcholine receptors and activated by retigabine, a novel anti-convulsant drug. Defects in KCNQ2 are a cause of benign familial neonatal convulsions type 1 (BFNC), also known as epilepsy, benign neonatal type 1 (EBN1).</p> <p>Alias Symbols: EBN, BFNC, EBN1, ENB1, BFNS1, EIEE7, HN5PC, KV7.2, KCNA11, KVEBN1</p> <p>Protein Interaction Partner: ARIH2, KCNQ3, PRKCA, CALM3, CALM1, CALM2, KCNQ1,</p> <p>Protein Size: 393</p>
Molecular Weight:	43 kDa
Gene ID:	3785
NCBI Accession:	NM_172109 , NP_742107
UniProt:	Q5VYU0

Application Details

Application Notes:	Optimal working dilutions should be determined experimentally by the investigator.
Comment:	Antigen size: 393 AA
Restrictions:	For Research Use only

Handling

Format:	Liquid
Concentration:	Lot specific
Buffer:	Liquid. Purified antibody supplied in 1x PBS buffer with 0.09 % (w/v) sodium azide and 2 % sucrose.
Preservative:	Sodium azide
Precaution of Use:	This product contains Sodium azide: a POISONOUS AND HAZARDOUS SUBSTANCE which should be handled by trained staff only.
Handling Advice:	Avoid repeated freeze-thaw cycles.

Handling

Storage: -20 °C

Storage Comment: For short term use, store at 2-8°C up to 1 week. For long term storage, store at -20°C in small aliquots to prevent freeze-thaw cycles.

Publications

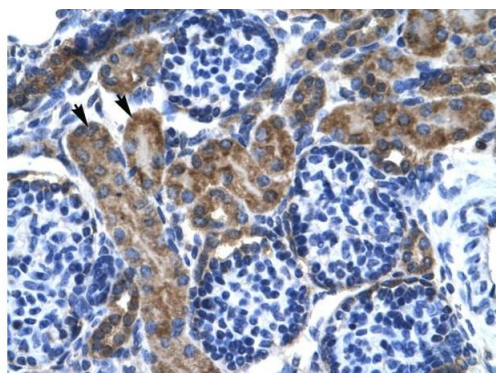
Product cited in: Mullins, Crawford, Khuder, Hernandez, Yoon, Willey: "CEBPG transcription factor correlates with antioxidant and DNA repair genes in normal bronchial epithelial cells but not in individuals with bronchogenic carcinoma." in: **BMC cancer**, Vol. 5, pp. 141, (2005) ([PubMed](#)).

Images



Western Blotting

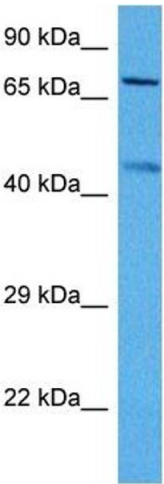
Image 1. WB Suggested Anti-KCNQ2 Antibody Titration: 1.25ug/ml ELISA Titer: 1:62500 Positive Control: HepG2 cell lysate



Rabbit Anti-KCNQ2 Antibody
Catalog Number: ARP35459
Lot Number: QC5286
Paraffin Embedded Tissue: Human Kidney
Cells with Positive label: Epithelial cells of renal tubule (Indicated with Arrows)
Antibody Concentration: 4.0-8.0 µg/ml
Magnification: 400X

Immunohistochemistry

Image 2. Human kidney



Western Blotting

Image 3. Host: Mouse Target Name: KCNQ2 Sample
Tissue: Mouse Skeletal Muscle Antibody Dilution: 1ug/ml