

Datasheet for ABIN2776312 anti-KCNG4 antibody (Middle Region)



[Go to Product page](#)

1 Image

Overview

Quantity:	100 µL
Target:	KCNG4 (Kcng4)
Binding Specificity:	Middle Region
Reactivity:	Human, Mouse, Rat, Cow, Dog, Guinea Pig, Horse, Pig
Host:	Rabbit
Clonality:	Polyclonal
Conjugate:	This KCNG4 antibody is un-conjugated
Application:	Western Blotting (WB)

Product Details

Immunogen:	The immunogen is a synthetic peptide directed towards the middle region of RAT Kcng4
Sequence:	SDESPEAGER PSGSSYLEKV GLVLRVLRAL RILYVMRLAR HSLGLQTLGL
Predicted Reactivity:	Cow: 93%, Dog: 86%, Guinea Pig: 85%, Horse: 93%, Human: 100%, Mouse: 86%, Pig: 93%, Rat: 93%
Characteristics:	This is a rabbit polyclonal antibody against Kcng4 . It was validated on Western Blot.
Purification:	Affinity Purified

Target Details

Target:	KCNG4 (Kcng4)
Alternative Name:	Kcng4 (Kcng4 Products)

Target Details

Background: The function of this protein remains unknown.
Alias Symbols: -
Protein Size: 506

Molecular Weight: 55 kDa

Gene ID: 307900

NCBI Accession: [NM_001107435](#), [NP_001100905](#)

UniProt: [D4AD66](#)

Application Details

Application Notes: Optimal working dilution should be determined by the investigator.

Restrictions: For Research Use only

Handling

Format: Liquid

Concentration: 1 mg/mL

Buffer: Liquid. Purified antibody supplied in 1x PBS buffer with 0.09 % (w/v) sodium azide and 2 % sucrose.

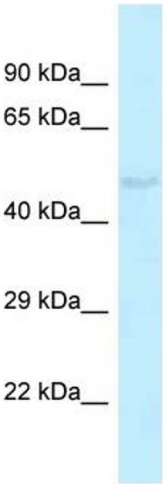
Preservative: Sodium azide

Precaution of Use: This product contains Sodium azide: a POISONOUS AND HAZARDOUS SUBSTANCE which should be handled by trained staff only.

Handling Advice: Avoid repeat freeze-thaw cycles.

Storage: -20 °C

Storage Comment: For short term use, store at 2-8°C up to 1 week. For long term storage, store at -20°C in small aliquots to prevent freeze-thaw cycles.



Host: Rabbit
Target Name: Kcng4
Sample Tissue: Rat Liver Lysate
Antibody Dilution: 1.0µg/ml

Western Blotting

Image 1. Host: Rabbit Target Name: Kcng4 Sample Type: Rat Liver lysates Antibody Dilution: 1.0ug/ml