

Datasheet for ABIN2776327
anti-CLCN3 antibody (C-Term)



[Go to Product page](#)

5 Images

1 Publication

Overview

| | |
|----------------------|--|
| Quantity: | 100 µL |
| Target: | CLCN3 |
| Binding Specificity: | C-Term |
| Reactivity: | Rat, Human, Mouse, Guinea Pig, Rabbit, Dog, Zebrafish (Danio rerio), Horse, Cow, Sheep |
| Host: | Rabbit |
| Clonality: | Polyclonal |
| Conjugate: | This CLCN3 antibody is un-conjugated |
| Application: | Western Blotting (WB), Immunohistochemistry (IHC) |

Product Details

| | |
|-----------------------|---|
| Immunogen: | The immunogen is a synthetic peptide directed towards the C-terminal region of human CLCN3 |
| Sequence: | VGDAFGREGI YEAHIRLNGY PFLDAKEEFT HTTLAADVMR PRRNDPPLAV L |
| Predicted Reactivity: | Cow: 100%, Dog: 100%, Guinea Pig: 100%, Horse: 100%, Human: 100%, Mouse: 100%, Rabbit: 100%, Rat: 100%, Sheep: 91%, Zebrafish: 100% |
| Characteristics: | This is a rabbit polyclonal antibody against CLCN3. It was validated on Western Blot and immunohistochemistry. |
| Purification: | Protein A purified |

Target Details

| | |
|---------|-------|
| Target: | CLCN3 |
|---------|-------|

Target Details

| | |
|-------------------|---|
| Alternative Name: | CLCN3 (CLCN3 Products) |
| Background: | <p>CLCN3 plays an important role in the cell proliferation of vascular smooth muscle cells. The PDZ-binding isoform of CLCN3 resides in the Golgi where it co-localizes with a small amount of CFTR (cystic fibrosis transmembrane conductance regulator).</p> <p>Alias Symbols: CLC3, CIC-3</p> <p>Protein Interaction Partner: GOPC, SLC9A3R1, PDZK1, CLCN3, CFTR,</p> <p>Protein Size: 866</p> |
| Molecular Weight: | 95 kDa |
| Gene ID: | 1182 |
| NCBI Accession: | NM_173872, NP_776297 |
| UniProt: | P51790 |

Application Details

| | |
|--------------------|--|
| Application Notes: | Optimal working dilutions should be determined experimentally by the investigator. |
| Comment: | Antigen size: 866 AA |
| Restrictions: | For Research Use only |

Handling

| | |
|--------------------|---|
| Format: | Liquid |
| Concentration: | Lot specific |
| Buffer: | Liquid. Purified antibody supplied in 1x PBS buffer with 0.09 % (w/v) sodium azide and 2 % sucrose. |
| Preservative: | Sodium azide |
| Precaution of Use: | This product contains Sodium azide: a POISONOUS AND HAZARDOUS SUBSTANCE which should be handled by trained staff only. |
| Handling Advice: | Avoid repeated freeze-thaw cycles. |
| Storage: | -20 °C |
| Storage Comment: | For short term use, store at 2-8°C up to 1 week. For long term storage, store at -20°C in small aliquots to prevent freeze-thaw cycles. |

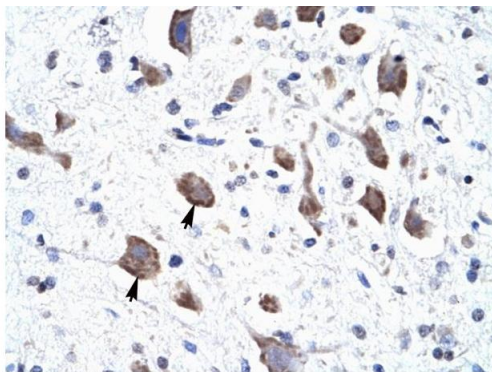
Product cited in: Jensen, Nosjean, Dziegiel, Boutin, Sørensen, Karsdal, Henriksen: "A quantitative assay for lysosomal acidification rates in human osteoclasts." in: **Assay and drug development technologies**, Vol. 9, Issue 2, pp. 157-64, (2011) ([PubMed](#)).

Images



Western Blotting

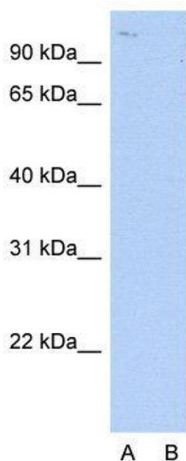
Image 1. WB Suggested Anti-CLCN3 Antibody Titration: 1.25ug/ml ELISA Titer: 1:1562500 Positive Control: HepG2 cell lysate



Rabbit Anti-CLCN3 Antibody
 Catalog Number: ARP35504
 Lot Number: QC4788
 Paraffin Embedded Tissue: Human Brain
 Cells with Positive label: Neural cells (Indicated with Arrows)
 Antibody Concentration: 4.0-8.0 µg/ml
 Magnification: 400X

Immunohistochemistry

Image 2. Human Brain



Anti-CLCN3 Western Blot & Peptide Block Validation

Lot Number: QC4788
 Lysate: HepG2 Cell

Lane A: Primary Antibody
 Lane B: Primary Antibody + Blocking Peptide

Primary Antibody Concentration: 2.5µg/ml
 Peptide Concentration: 2.0µg/ml
 Lysate Quantity: 25µg/lane
 Gel Concentration: 12%

A B

Western Blotting

Image 3. Host: Rabbit Target Name: CLCN3 Sample Type: HepG2 Lane A: Primary Antibody Lane B: Primary Antibody + Blocking Peptide Primary Antibody Concentration: 2.5ug/mL Peptide Concentration: 2.0ug/mL Lysate Quantity: 25ug/lane Gel Concentration: 12%

Images

Please check the [product details page](#) for more images. Overall 5 images are available for ABIN2776327.