

Datasheet for ABIN2776341
anti-HTR3E antibody (Middle Region)[Go to Product page](#)

2 Images

Overview

Quantity:	100 µL
Target:	HTR3E
Binding Specificity:	Middle Region
Reactivity:	Human, Dog, Rabbit, Horse
Host:	Rabbit
Clonality:	Polyclonal
Conjugate:	This HTR3E antibody is un-conjugated
Application:	Western Blotting (WB), Immunofluorescence (IF)

Product Details

Immunogen:	The immunogen is a synthetic peptide directed towards the middle region of human HTR3E
Sequence:	RWLHSLLLHC NSPGRCCPTA PQKENKGPGL TPTHLPGVKE PEVSAGQMPG
Predicted Reactivity:	Dog: 100%, Horse: 83%, Human: 100%, Rabbit: 83%
Characteristics:	This is a rabbit polyclonal antibody against HTR3E. It was validated on Western Blot using a cell lysate as a positive control.
Purification:	Affinity Purified

Target Details

Target:	HTR3E
Alternative Name:	HTR3E (HTR3E Products)

Target Details

Background:	<p>HTR3E belongs to the ligand-gated ion channel receptor superfamily. HTR3E is a subunit E of the type 3 receptor for 5-hydroxytryptamine (serotonin), a biogenic hormone that functions as a neurotransmitter, a hormone, and a mitogen. This receptor causes fast, depolarizing responses in neurons after activation. Genes encoding subunits C, D and E form a cluster on chromosome 3. The product of this gene belongs to the ligand-gated ion channel receptor superfamily. This gene encodes a subunit E of the type 3 receptor for 5-hydroxytryptamine (serotonin), a biogenic hormone that functions as a neurotransmitter, a hormone, and a mitogen. This receptor causes fast, depolarizing responses in neurons after activation. Genes encoding subunits C, D and E form a cluster on chromosome 3. An alternative splice variant has been described but its full length sequence has not been determined.</p> <p>Alias Symbols: 5-HT3c1, MGC120035, MGC120036, MGC120037, 5-HT3E, 5-HT3-E</p> <p>Protein Size: 471</p>
-------------	--

Molecular Weight:	53 kDa
-------------------	--------

Gene ID:	285242
----------	--------

NCBI Accession:	NM_182589 , NP_872395
-----------------	---

UniProt:	A5X5Y0
----------	------------------------

Application Details

Application Notes:	Optimal working dilutions should be determined experimentally by the investigator.
--------------------	--

Comment:	Antigen size: 471 AA
----------	----------------------

Restrictions:	For Research Use only
---------------	-----------------------

Handling

Format:	Liquid
---------	--------

Concentration:	Lot specific
----------------	--------------

Buffer:	Liquid. Purified antibody supplied in 1x PBS buffer with 0.09 % (w/v) sodium azide and 2 % sucrose.
---------	---

Preservative:	Sodium azide
---------------	--------------

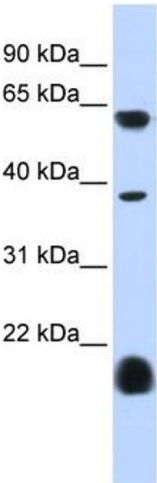
Precaution of Use:	This product contains Sodium azide: a POISONOUS AND HAZARDOUS SUBSTANCE which should be handled by trained staff only.
--------------------	--

Handling Advice:	Avoid repeated freeze-thaw cycles.
------------------	------------------------------------

Handling

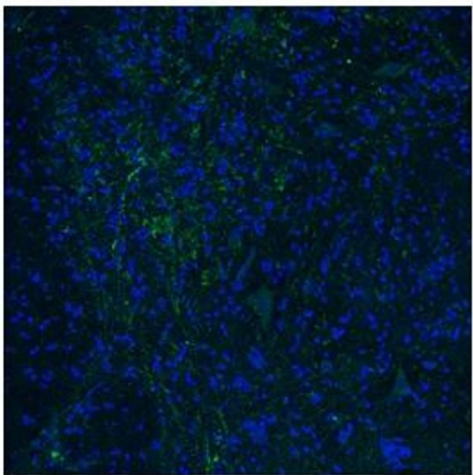
Storage:	-20 °C
Storage Comment:	For short term use, store at 2-8°C up to 1 week. For long term storage, store at -20°C in small aliquots to prevent freeze-thaw cycles.

Images



Western Blotting

Image 1. WB Suggested Anti-HTR3E Antibody Titration: 0.2-1 ug/ml ELISA Titer: 1:312500 Positive Control: Human heart



Immunofluorescence

Image 2. Immunofluorescence -- Dilution: 1.3ug/mL