

Datasheet for ABIN2776353

anti-CACNB1 antibody (Middle Region)[Go to Product page](#)**2** Images

Overview

Quantity:	100 µL
Target:	CACNB1
Binding Specificity:	Middle Region
Reactivity:	Human, Mouse, Cow, Guinea Pig, Rabbit
Host:	Rabbit
Clonality:	Polyclonal
Conjugate:	This CACNB1 antibody is un-conjugated
Application:	Western Blotting (WB), Immunohistochemistry (IHC)

Product Details

Immunogen:	The immunogen is a synthetic peptide directed towards the middle region of human CACNB1
Sequence:	TRRPTPPASG NEMTNLAFEL DPLELEEEEA ELGEQSGSAK TSVSSVTTPP
Predicted Reactivity:	Cow: 100%, Guinea Pig: 100%, Human: 100%, Mouse: 86%, Rabbit: 100%
Characteristics:	This is a rabbit polyclonal antibody against CACNB1. It was validated on Western Blot and immunohistochemistry.
Purification:	Affinity Purified

Target Details

Target:	CACNB1
Alternative Name:	CACNB1 (CACNB1 Products)

Target Details

Background:	<p>The protein encoded by CACNB1 belongs to the calcium channel beta subunit family. It plays an important role in the calcium channel by modulating G protein inhibition, increasing peak calcium current, controlling the alpha-1 subunit membrane targeting and shifting the voltage dependence of activation and inactivation. The protein encoded by this gene belongs to the calcium channel beta subunit family. It plays an important role in the calcium channel by modulating G protein inhibition, increasing peak calcium current, controlling the alpha-1 subunit membrane targeting and shifting the voltage dependence of activation and inactivation. Alternative splicing occurs at this locus and three transcript variants encoding three distinct isoforms have been identified.</p> <p>Alias Symbols: CAB1, CACNLB1, CCHLB1, MGC41896</p> <p>Protein Interaction Partner: SRPK1, APP, ATN1, NEDD4L, UBC, REM1, DYNLL1, CACNA1A,</p> <p>Protein Size: 523</p>
-------------	---

Molecular Weight:	58 kDa
-------------------	--------

Gene ID:	782
----------	-----

NCBI Accession:	NM_199247 , NP_954855
-----------------	---

Application Details

Application Notes:	Optimal working dilutions should be determined experimentally by the investigator.
--------------------	--

Comment:	Antigen size: 523 AA
----------	----------------------

Restrictions:	For Research Use only
---------------	-----------------------

Handling

Format:	Liquid
---------	--------

Concentration:	Lot specific
----------------	--------------

Buffer:	Liquid. Purified antibody supplied in 1x PBS buffer with 0.09 % (w/v) sodium azide and 2 % sucrose.
---------	---

Preservative:	Sodium azide
---------------	--------------

Precaution of Use:	This product contains Sodium azide: a POISONOUS AND HAZARDOUS SUBSTANCE which should be handled by trained staff only.
--------------------	--

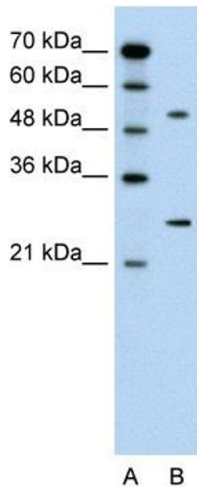
Handling Advice:	Avoid repeated freeze-thaw cycles.
------------------	------------------------------------

Storage:	-20 °C
----------	--------

Handling

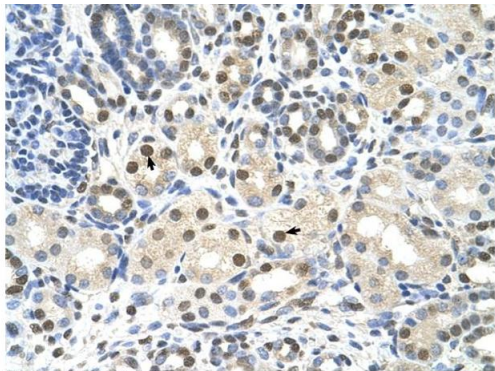
Storage Comment: For short term use, store at 2-8°C up to 1 week. For long term storage, store at -20°C in small aliquots to prevent freeze-thaw cycles.

Validation report #104256 for Western Blotting (WB)



Western Blotting

Image 1. WB Suggested Anti-CACNB1 Antibody Titration:
0.2-1 ug/ml Positive Control: Jurkat cell lysate



Immunohistochemistry

Image 2. Human kidney

Rabbit Anti-CACNB1 Antibody
Catalog Number: ARP35579
Lot Number: QC11673
Paraffin Embedded Tissue: Human Kidney
Cells with Positive label: Epithelial cells of renal tubule (Indicated with Arrows)
Antibody Concentration: 4.0-8.0 µg/ml
Magnification: 400X