

Datasheet for ABIN2776357  
**anti-KCNRG antibody (N-Term)**



[Go to Product page](#)

1 Image

## Overview

Quantity:	100 µL
Target:	KCNRG
Binding Specificity:	N-Term
Reactivity:	Human, Horse, Cow, Dog, Pig, Rabbit, Rat
Host:	Rabbit
Clonality:	Polyclonal
Conjugate:	This KCNRG antibody is un-conjugated
Application:	Western Blotting (WB)

## Product Details

Immunogen:	The immunogen is a synthetic peptide directed towards the N terminal region of human KCNRG
Sequence:	VDRDGDLSF ILDFLRTHQL LLPTEFSDYL RLQREALFYE LRSLVDLLNP
Predicted Reactivity:	Cow: 86%, Dog: 92%, Horse: 93%, Human: 100%, Pig: 86%, Rabbit: 93%, Rat: 85%
Characteristics:	This is a rabbit polyclonal antibody against KCNRG. It was validated on Western Blot using a cell lysate as a positive control.
Purification:	Protein A purified

## Target Details

Target:	KCNRG
---------	-------

## Target Details

Alternative Name:	KCNRG ( <a href="#">KCNRG Products</a> )
Background:	<p>KCNRG is a soluble protein with characteristics suggesting it forms heterotetramers with voltage-gated K(+) channels and inhibits their function.KCNRG is a soluble protein with characteristics suggesting it forms heterotetramers with voltage-gated K(+) channels (see MIM 176260) and inhibits their function (Ivanov et al., 2003 [PubMed 12650944]).[supplied by OMIM].</p> <p>PRIMARYREFSEQ_SPAN PRIMARY_IDENTIFIER PRIMARY_SPAN COMP 1-1527 AY169388.1 1-1527</p> <p>Alias Symbols: DLTET</p> <p>Protein Interaction Partner: KCNRG, KCNA4, KCNA1, DGCR6L, AP5B1, CCNK, FXR2,</p> <p>Protein Size: 272</p>
Molecular Weight:	31 kDa
Gene ID:	283518
NCBI Accession:	<a href="#">NM_173605</a> , <a href="#">NP_775876</a>
UniProt:	<a href="#">Q8N5I3</a>

## Application Details

Application Notes:	Optimal working dilutions should be determined experimentally by the investigator.
Comment:	Antigen size: 272 AA
Restrictions:	For Research Use only

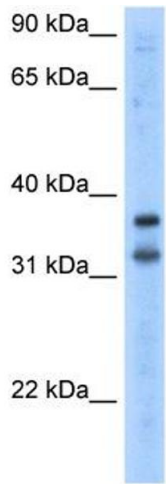
## Handling

Format:	Liquid
Concentration:	Lot specific
Buffer:	Liquid. Purified antibody supplied in 1x PBS buffer with 0.09 % (w/v) sodium azide and 2 % sucrose.
Preservative:	Sodium azide
Precaution of Use:	This product contains Sodium azide: a POISONOUS AND HAZARDOUS SUBSTANCE which should be handled by trained staff only.
Handling Advice:	Avoid repeated freeze-thaw cycles.
Storage:	-20 °C

Handling

Storage Comment: For short term use, store at 2-8°C up to 1 week. For long term storage, store at -20°C in small aliquots to prevent freeze-thaw cycles.

Images



**Western Blotting**

**Image 1.** WB Suggested Anti-KCNRG Antibody Titration:  
2.5ug/ml Positive Control: Transfected 293T