

Datasheet for ABIN2776382

anti-CEBPG antibody (N-Term)



[Go to Product page](#)

1 Image

1 Publication

Overview

Quantity:	100 µL
Target:	CEBPG
Binding Specificity:	N-Term
Reactivity:	Human, Mouse, Rat, Cow, Dog, Guinea Pig, Horse, Rabbit
Host:	Rabbit
Clonality:	Polyclonal
Conjugate:	This CEBPG antibody is un-conjugated
Application:	Western Blotting (WB)

Product Details

Immunogen:	The immunogen is a synthetic peptide directed towards the N terminal region of human CEBPG
Sequence:	PGVNGISVIH TQAHASGLQQ VPQLVPAGPG GGGKAVAPSK QSKKSSPMDR
Predicted Reactivity:	Cow: 93%, Dog: 93%, Guinea Pig: 86%, Horse: 93%, Human: 100%, Mouse: 93%, Rabbit: 93%, Rat: 93%
Characteristics:	This is a rabbit polyclonal antibody against CEBPG. It was validated on Western Blot using a cell lysate as a positive control.
Purification:	Affinity Purified

Target Details

Target:	CEBPG
---------	-------

Target Details

Alternative Name:	CEBPG (CEBPG Products)
Background:	<p>The C/EBP family of transcription factors regulates viral and cellular CCAAT/enhancer element-mediated transcription. C/EBP proteins contain the bZIP region, which is characterized by two motifs in the C-terminal half of the protein: a basic region involved in DNA binding and a leucine zipper motif involved in dimerization. The C/EBP family consist of several related proteins, C/EBP alpha, C/EBP beta, C/EBP gamma, and C/EBP delta, that form homodimers and that form heterodimers with each other. CCAAT/enhancer binding protein gamma(CEBPG) may cooperate with Fos to bind PRE-I enhancer elements. The C/EBP family of transcription factors regulates viral and cellular CCAAT/enhancer element-mediated transcription. C/EBP proteins contain the bZIP region, which is characterized by two motifs in the C-terminal half of the protein: a basic region involved in DNA binding and a leucine zipper motif involved in dimerization. The C/EBP family consist of several related proteins, C/EBP alpha, C/EBP beta, C/EBP gamma, and C/EBP delta, that form homodimers and that form heterodimers with each other. CCAAT/enhancer binding protein gamma may cooperate with Fos to bind PRE-I enhancer elements.</p> <p>Alias Symbols: GPE1BP, IG/EBP-1</p> <p>Protein Interaction Partner: DDIT3, ATF4, ATF3, BATF2, BATF3, BATF, CREB3, FOSL1, PLAU, JUN, FOS, DBP, ATF2, CEBPG, CEBPE, CEBPA, UBC, ELAVL1, CDK2, CREB3L3, MLLT6, POLR2M, ATF5, GTF2F2, CEBPB, CEBPD,</p> <p>Protein Size: 150</p>
Molecular Weight:	16 kDa
Gene ID:	1054
NCBI Accession:	NM_001806 , NP_001797
UniProt:	P53567
Pathways:	Positive Regulation of Response to DNA Damage Stimulus

Application Details

Application Notes:	Optimal working dilutions should be determined experimentally by the investigator.
Comment:	Antigen size: 150 AA
Restrictions:	For Research Use only

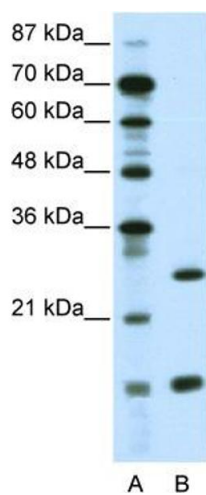
Handling

Format:	Liquid
Concentration:	Lot specific
Buffer:	Liquid. Purified antibody supplied in 1x PBS buffer with 0.09 % (w/v) sodium azide and 2 % sucrose.
Preservative:	Sodium azide
Precaution of Use:	This product contains Sodium azide: a POISONOUS AND HAZARDOUS SUBSTANCE which should be handled by trained staff only.
Handling Advice:	Avoid repeated freeze-thaw cycles.
Storage:	-20 °C
Storage Comment:	For short term use, store at 2-8°C up to 1 week. For long term storage, store at -20°C in small aliquots to prevent freeze-thaw cycles.

Publications

Product cited in:	Mullins, Crawford, Khuder, Hernandez, Yoon, Willey: "CEBPG transcription factor correlates with antioxidant and DNA repair genes in normal bronchial epithelial cells but not in individuals with bronchogenic carcinoma." in: BMC cancer , Vol. 5, pp. 141, (2005) (PubMed).
-------------------	--

Images



Western Blotting

Image 1. WB Suggested Anti-CEBPG Antibody Titration: 0.2-1 ug/ml ELISA Titer: 1:312500 Positive Control: Jurkat cell lysate