

Datasheet for ABIN2776387  
**anti-SMARCD3 antibody (N-Term)**

## 5 Images

[Go to Product page](#)

## Overview

Quantity:	100 µL
Target:	SMARCD3
Binding Specificity:	N-Term
Reactivity:	Human, Mouse, Rat, Cow, Dog, Guinea Pig, Horse, Rabbit, Zebrafish (Danio rerio)
Host:	Rabbit
Clonality:	Polyclonal
Conjugate:	This SMARCD3 antibody is un-conjugated
Application:	Western Blotting (WB), Immunohistochemistry (IHC)

## Product Details

Immunogen:	The immunogen is a synthetic peptide directed towards the N terminal region of human SMARCD3
Sequence:	KRVDIQEALK RPMKQKRKLR LYISNTFNPA KPDAEDSDGS IASWELRVEG
Cross-Reactivity:	Cow (Bovine), Dog (Canine), Human, Mouse (Murine), Rat (Rattus)
Predicted Reactivity:	Cow: 100%, Dog: 100%, Guinea Pig: 100%, Horse: 100%, Human: 100%, Mouse: 100%, Rabbit: 100%, Rat: 100%, Zebrafish: 100%
Characteristics:	This is a rabbit polyclonal antibody against SMARCD3. It was validated on Western Blot.
Purification:	Affinity Purified

## Target Details

Target:	SMARCD3
Alternative Name:	SMARCD3 ( <a href="#">SMARCD3 Products</a> )
Background:	<p>SMARCD3 is a member of the SWI/SNF family of proteins, whose members display helicase and ATPase activities and which are thought to regulate transcription of certain genes by altering the chromatin structure around those genes. SMARCD3 is part of the lar.</p> <p>Alias Symbols: BAF60C, CRACD3, MGC111010, Rsc6p</p> <p>Protein Interaction Partner: UBC, Rxra, NR1H4, SREBF1, SMARCA4, RORA, PPARG, PBX1, JUN, ESRRA, CPSF2, CRNKL1, ARID1A, SMARCE1, SMARCB1, SMARCA2, POLR2D, MYOD1, MAPK14, SMARCC2, RARA, NR5A2, FANCA, ARHGAP1, SMARCC1, NR5A1, ESR1, CCNE1, STARD13,</p> <p>Protein Size: 483</p>
Molecular Weight:	55 kDa
Gene ID:	6604
NCBI Accession:	<a href="#">NM_001003801</a> , <a href="#">NP_001003801</a>
UniProt:	<a href="#">Q6STE5</a>
Pathways:	<a href="#">Regulation of Lipid Metabolism by PPARalpha</a>

## Application Details

Application Notes:	<p>WB Suggested Anti-SMARCD3 Antibody Titration: 0.2-1 µg/mL</p> <p>ELISA Titer: 1:312500</p> <p>Positive Control: 293T cell lysate.</p> <p>Optimal working dilutions should be determined experimentally by the investigator.</p>
Comment:	Antigen size: 483 AA
Restrictions:	For Research Use only

## Handling

Format:	Liquid
Concentration:	Lot specific
Buffer:	Liquid. Purified antibody supplied in 1x PBS buffer with 0.09 % (w/v) sodium azide and 2 % sucrose.
Preservative:	Sodium azide

## Handling

Precaution of Use:	This product contains Sodium azide: a POISONOUS AND HAZARDOUS SUBSTANCE which should be handled by trained staff only.
Handling Advice:	Avoid repeated freeze-thaw cycles.
Storage:	-20 °C
Storage Comment:	For short term use, store at 2-8°C up to 1 week. For long term storage, store at -20°C in small aliquots to prevent freeze-thaw cycles.

## Images

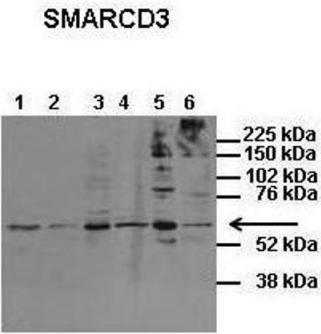


### Western Blotting

**Image 1.** WB Suggested Anti-SMARCD3 Antibody Titration: 0.2-1 ug/ml ELISA Titer: 1:312500 Positive Control: 293T cell lysate SMARCD3 is supported by BioGPS gene expression data to be expressed in HEK293T

### Western Blotting

**Image 2.** WB Suggested Anti-SMARCD3 Antibody Titration: 0.2-1 µg/mL ELISA Titer: 1:12500 Positive Control: 93T cell lysate SMARCD3 is supported by BioGPS gene expression data to be expressed in HEK293T



**Western Blotting**

**Image 3.** Host: Rabbit Target Name: SMARCD3 Sample  
Type: Human Fetal Brain Antibody Dilution: 1.0ug/ml

See Immunoblot 2 Data and customer Feedback for more Information

Please check the [product details page](#) for more images. Overall 5 images are available for ABIN2776387.