

Datasheet for ABIN2776397
anti-ZNF134 antibody (Middle Region)[Go to Product page](#)

2 Images

Overview

Quantity:	100 µL
Target:	ZNF134
Binding Specificity:	Middle Region
Reactivity:	Human, Pig
Host:	Rabbit
Clonality:	Polyclonal
Conjugate:	This ZNF134 antibody is un-conjugated
Application:	Western Blotting (WB), Immunohistochemistry (IHC)

Product Details

Immunogen:	The immunogen is a synthetic peptide directed towards the middle region of human ZNF134
Sequence:	SEKPFTCKEE QKNFQATLGG CQQKAIHSKR KTHRSTESGD AFHGEGMHYK
Predicted Reactivity:	Human: 100%, Pig: 86%
Characteristics:	This is a rabbit polyclonal antibody against ZNF134. It was validated on Western Blot and immunohistochemistry.
Purification:	Protein A purified

Target Details

Target:	ZNF134
Alternative Name:	ZNF134 (ZNF134 Products)

Target Details

Background: ZNF134 is a candidate transcription factor
Alias Symbols: pH Z-15
Protein Size: 348

Molecular Weight: 40 kDa

Gene ID: 7693

UniProt: [P52741](#)

Application Details

Application Notes: Optimal working dilutions should be determined experimentally by the investigator.

Comment: Antigen size: 348 AA

Restrictions: For Research Use only

Handling

Format: Liquid

Concentration: Lot specific

Buffer: Liquid. Purified antibody supplied in 1x PBS buffer with 0.09 % (w/v) sodium azide and 2 % sucrose.

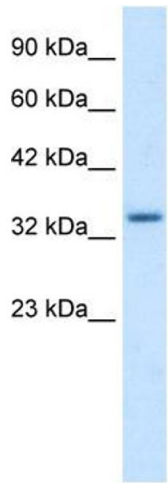
Preservative: Sodium azide

Precaution of Use: This product contains Sodium azide: a POISONOUS AND HAZARDOUS SUBSTANCE which should be handled by trained staff only.

Handling Advice: Avoid repeated freeze-thaw cycles.

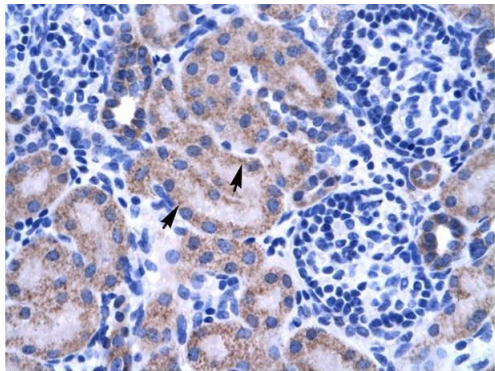
Storage: -20 °C

Storage Comment: For short term use, store at 2-8°C up to 1 week. For long term storage, store at -20°C in small aliquots to prevent freeze-thaw cycles.



Western Blotting

Image 1. WB Suggested Anti-ZNF134 Antibody Titration: 1.25ug/ml ELISA Titer: 1:62500 Positive Control: HepG2 cell lysate



Rabbit Anti-ZNF134 Antibody
Catalog Number: ARP35675
Lot Number: QC4957
Paraffin Embedded Tissue: Human Kidney
Cells with Positive label: Epithelial cells of renal tubule (Indicated with Arrows)
Antibody Concentration: 4.0-8.0 µg/ml
Magnification: 400X

Immunohistochemistry

Image 2. Human kidney