

Datasheet for ABIN2776403
anti-ZNF165 antibody (Middle Region)[Go to Product page](#)

2 Images

Overview

Quantity:	100 µL
Target:	ZNF165
Binding Specificity:	Middle Region
Reactivity:	Human, Pig, Cow
Host:	Rabbit
Clonality:	Polyclonal
Conjugate:	This ZNF165 antibody is un-conjugated
Application:	Western Blotting (WB), Immunohistochemistry (IHC)

Product Details

Immunogen:	The immunogen is a synthetic peptide directed towards the middle region of human ZNF165
Sequence:	ISEASGESQD ICKSAGRVKR QWEKESGESQ RLSSAQDEGF GKILTHKNTV
Predicted Reactivity:	Cow: 79%, Human: 100%, Pig: 86%
Characteristics:	This is a rabbit polyclonal antibody against ZNF165. It was validated on Western Blot using a cell lysate as a positive control.
Purification:	Affinity Purified

Target Details

Target:	ZNF165
Alternative Name:	ZNF165 (ZNF165 Products)

Target Details

Background:	<p>This protein is a member of the Kruppel family of zinc finger proteins. Members of this DNA-binding protein family act as transcriptional regulators. The protein may play a role in spermatogenesis. This gene encodes a member of the Kruppel family of zinc finger proteins. Members of this DNA-binding protein family act as transcriptional regulators. This gene is located within a cluster of zinc finger family members. The encoded protein may play a role in spermatogenesis.</p> <p>Alias Symbols: LD65, ZSCAN7, CT53</p> <p>Protein Interaction Partner: KRTAP10-3, KRTAP10-7, FAM124A, KRT40, GPATCH2L, ZNF446, MID2, AHCYL1, EMD, SUV39H1, TCEB3B, CCDC85B, ZNF250, SCAND1, KRTAP4-12, CCDC130, PDLIM7, KAT7, DVL2, EWSR1, ZKSCAN8, ZNF24,</p> <p>Protein Size: 485</p>
Molecular Weight:	56 kDa
Gene ID:	7718
NCBI Accession:	NM_003447 , NP_003438
UniProt:	P49910

Application Details

Application Notes:	Optimal working dilutions should be determined experimentally by the investigator.
Comment:	Antigen size: 485 AA
Restrictions:	For Research Use only

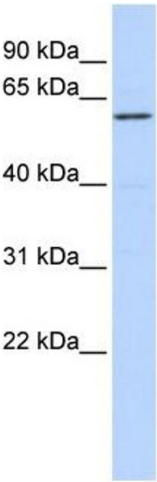
Handling

Format:	Liquid
Concentration:	Lot specific
Buffer:	Liquid. Purified antibody supplied in 1x PBS buffer with 0.09 % (w/v) sodium azide and 2 % sucrose.
Preservative:	Sodium azide
Precaution of Use:	This product contains Sodium azide: a POISONOUS AND HAZARDOUS SUBSTANCE which should be handled by trained staff only.
Handling Advice:	Avoid repeated freeze-thaw cycles.
Storage:	-20 °C

Handling

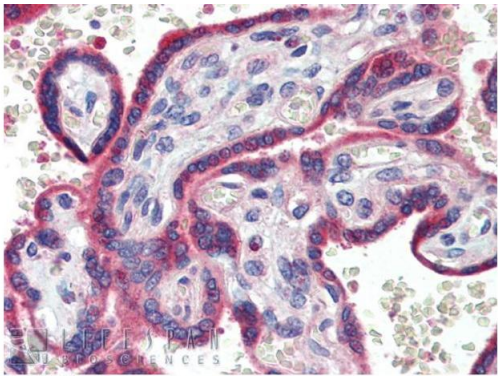
Storage Comment: For short term use, store at 2-8°C up to 1 week. For long term storage, store at -20°C in small aliquots to prevent freeze-thaw cycles.

Images



Western Blotting

Image 1. WB Suggested Anti-ZNF165 Antibody Titration: 0.2-1 ug/ml ELISA Titer: 1:12500 Positive Control: Hela cell lysate



Rabbit Anti-ZNF165 Antibody
Catalog Number: ARP35688
Lot Number: QC4967
Paraffin Embedded Tissue: Human Placenta
Antibody Concentration: 5.0 µg/ml
Data courtesy of Lifespan Biosciences, Inc.

Immunohistochemistry

Image 2. Immunohistochemistry with Human Placenta lysate tissue at an antibody concentration of 5.0ug/ml using anti-ZNF165 antibody