

Datasheet for ABIN2776405
anti-EDF1 antibody (N-Term)



[Go to Product page](#)

3 Images

3 Publications

Overview

Quantity:	100 µL
Target:	EDF1
Binding Specificity:	N-Term
Reactivity:	Human, Mouse, Rat, Dog, Cow, Guinea Pig, Horse, Zebrafish (Danio rerio)
Host:	Rabbit
Clonality:	Polyclonal
Conjugate:	This EDF1 antibody is un-conjugated
Application:	Western Blotting (WB), Immunofluorescence (IF)

Product Details

Immunogen:	The immunogen is a synthetic peptide directed towards the N terminal region of human EDF1
Sequence:	MAESDWDTVT VLRKKGPTAA QAKSKQAILA AQRGDEVET SKKWAAGQNK
Predicted Reactivity:	Cow: 100%, Dog: 100%, Guinea Pig: 100%, Horse: 100%, Human: 100%, Mouse: 100%, Rat: 100%, Zebrafish: 79%
Characteristics:	This is a rabbit polyclonal antibody against EDF1. It was validated on Western Blot using a cell lysate as a positive control.
Purification:	Affinity Purified

Target Details

Target:	EDF1
---------	------

Target Details

Alternative Name:	EDF1 (EDF1 Products)
Background:	<p>EDF1 encodes a protein that may regulate endothelial cell differentiation. It has been postulated that the protein functions as a bridging molecule that interconnects regulatory proteins and the basal transcriptional machinery, thereby modulating the tran</p> <p>Alias Symbols: EDF-1, MBF1, MGC9058</p> <p>Protein Interaction Partner: MEOX2, UBC, IDH3G, UBE2I, MAPK6, NRL, JUN, CEBPA, NR1H3, NR5A2, PPARG, TBP, TAF1, NR5A1, RXRA, PRKCA, ATF2, CREB1, ATF1, CALM3, CALM1,</p> <p>Protein Size: 148</p>
Molecular Weight:	16 kDa
Gene ID:	8721
NCBI Accession:	NM_003792 , NP_003783
UniProt:	O60869

Application Details

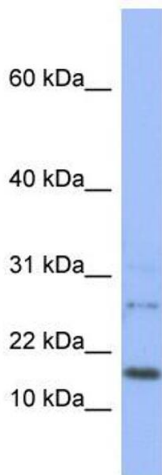
Application Notes:	Optimal working dilutions should be determined experimentally by the investigator.
Comment:	Antigen size: 148 AA
Restrictions:	For Research Use only

Handling

Format:	Liquid
Concentration:	Lot specific
Buffer:	Liquid. Purified antibody supplied in 1x PBS buffer with 0.09 % (w/v) sodium azide and 2 % sucrose.
Preservative:	Sodium azide
Precaution of Use:	This product contains Sodium azide: a POISONOUS AND HAZARDOUS SUBSTANCE which should be handled by trained staff only.
Handling Advice:	Avoid repeated freeze-thaw cycles.
Storage:	-20 °C
Storage Comment:	For short term use, store at 2-8°C up to 1 week. For long term storage, store at -20°C in small aliquots to prevent freeze-thaw cycles.

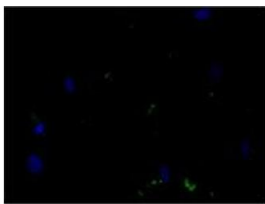
Product cited in: Ramsey, Clarke, Roberts, Sullivan, Johnson, Liu: "An economic evaluation of atorvastatin for primary prevention of cardiovascular events in type 2 diabetes." in: **Pharmacoeconomics**, Vol. 26, Issue 4, pp. 329-39, (2008) ([PubMed](#)).

Validation report #104256 for Western Blotting (WB)

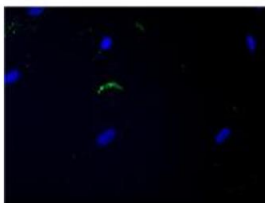


Western Blotting

Image 1. WB Suggested Anti-EDF1 Antibody Titration: 0.2-1 ug/ml ELISA Titer: 1:1562500 Positive Control: THP-1 cell lysate



Control: no antibody

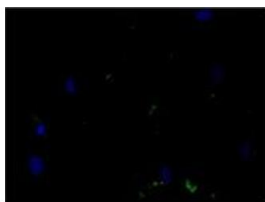


EDF1

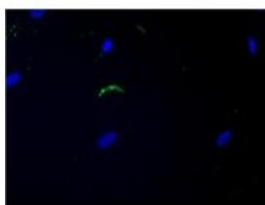
EDF1 (ARP35695_P050)
Immunofluorescence
human fibroblasts
Methanol fix
Dilution: 5 ug/ml
Application data in forum

Submitted by:
Michael White
Texas A & M University

Image 2.



Control: no antibody



EDF1

Immunofluorescence

Image 3. WB Suggested Anti-GPD1 Antibody Titration: 5 ug/ml Positive Control: HG