

Datasheet for ABIN2776407
anti-EED antibody (N-Term)[Go to Product page](#)

8 Images

2 Publications

Overview

Quantity:	100 µL
Target:	EED
Binding Specificity:	N-Term
Reactivity:	Human, Mouse, Rat, Dog, Cow, Zebrafish (Danio rerio), Guinea Pig, Horse, Rabbit
Host:	Rabbit
Clonality:	Polyclonal
Conjugate:	This EED antibody is un-conjugated
Application:	Western Blotting (WB), Immunofluorescence (IF)

Product Details

Immunogen:	The immunogen is a synthetic peptide directed towards the N terminal region of human EED
Sequence:	GDENDDAVSI ESGTINTERPD TPTNTPNAPG RKSWGKGGKWK SKKCKYSFKC
Predicted Reactivity:	Cow: 100%, Dog: 100%, Guinea Pig: 100%, Horse: 100%, Human: 100%, Mouse: 100%, Rabbit: 93%, Rat: 100%, Zebrafish: 85%
Characteristics:	This is a rabbit polyclonal antibody against EED. It was validated on Western Blot using a cell lysate as a positive control.
Purification:	Affinity Purified

Target Details

Target:	EED
---------	-----

Target Details

Alternative Name:	EED (EED Products)
Background:	<p>EED is a member of the Polycomb-group (PcG) family. PcG family members form multimeric protein complexes, which are involved in maintaining the transcriptional repressive state of genes over successive cell generations. This protein interacts with enhance</p> <p>Alias Symbols: HEED, WAIT1</p> <p>Protein Interaction Partner: PINK1, BRCA1, ADAM17, EZH2, IMP3, PSPC1, NAT10, PBRM1, RIF1, RBM28, HEATR1, MAGOHB, ARGLU1, MRPL20, NRDE2, CASZ1, BCOR, EXOSC4, LUC7L3, SF3B6, NOP58, SRRT, RAB14, C9orf114, CRNKL1, DDX47, HP1BP3, MYEF2, TRA2A, CPSF1, IGHV3-23, UTP20, PRPF19, ZNF638, RBMX,</p> <p>Protein Size: 441</p>
Molecular Weight:	50 kDa
Gene ID:	8726
NCBI Accession:	NM_003797 , NP_003788
UniProt:	O75530

Application Details

Application Notes:	Optimal working dilutions should be determined experimentally by the investigator.
Comment:	Antigen size: 441 AA
Restrictions:	For Research Use only

Handling

Format:	Liquid
Concentration:	Lot specific
Buffer:	Liquid. Purified antibody supplied in 1x PBS buffer with 0.09 % (w/v) sodium azide and 2 % sucrose.
Preservative:	Sodium azide
Precaution of Use:	This product contains Sodium azide: a POISONOUS AND HAZARDOUS SUBSTANCE which should be handled by trained staff only.
Handling Advice:	Avoid repeated freeze-thaw cycles.
Storage:	-20 °C

Handling

Storage Comment:	For short term use, store at 2-8°C up to 1 week. For long term storage, store at -20°C in small aliquots to prevent freeze-thaw cycles.
------------------	---

Publications

Product cited in:	Tilley, Harvey, Heguy, Hackett, Wang, OConnor, Crystal: "Down-regulation of the notch pathway in human airway epithelium in association with smoking and chronic obstructive pulmonary disease." in: American journal of respiratory and critical care medicine , Vol. 179, Issue 6, pp. 457-66, (2009) (PubMed).
-------------------	--

Images

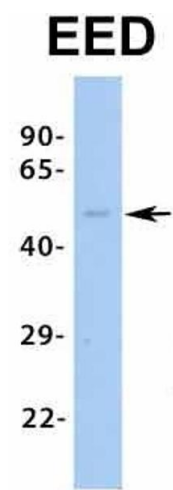


Western Blotting

Image 1. WB Suggested Anti-EED Antibody Titration: 0.2-1 ug/ml ELISA Titer: 1:2500 Positive Control: OVCAR-3 cell lysate EED is strongly supported by BioGPS gene expression data to be expressed in Human OVCAR3 cells

Western Blotting

Image 2. WB Suggested Anti-EED Antibody Titration: 0.2-1 µg/mL ELISA Titer: 1:500 Positive Control: OVCAR-3 cell lysate EED is strongly supported by BioGPS gene expression data to be expressed in Human OVCAR3 cells



Western Blotting

Image 3. Host: Rabbit Target Name: EED Sample Type:
Human Fetal Heart Antibody Dilution: 1.0ug/ml

Please check the [product details page](#) for more images. Overall 8 images are available for ABIN2776407.