

Datasheet for ABIN2776425
anti-NMI antibody (Middle Region)[Go to Product page](#)

2 Images

Overview

Quantity:	100 µL
Target:	NMI
Binding Specificity:	Middle Region
Reactivity:	Human, Rat, Mouse, Guinea Pig, Horse
Host:	Rabbit
Clonality:	Polyclonal
Conjugate:	This NMI antibody is un-conjugated
Application:	Western Blotting (WB), Immunohistochemistry (IHC)

Product Details

Immunogen:	The immunogen is a synthetic peptide directed towards the middle region of human NMI
Sequence:	SFSKSRNGGG EVDRVYDRQ SGSAVITFVE IGVADKILKK KEYPLYINQT
Predicted Reactivity:	Guinea Pig: 79%, Horse: 79%, Human: 100%, Mouse: 86%, Rat: 86%
Characteristics:	This is a rabbit polyclonal antibody against NMI. It was validated on Western Blot using a cell lysate as a positive control.
Purification:	Affinity Purified

Target Details

Target:	NMI
Alternative Name:	NMI (NMI Products)

Target Details

Background:	<p>NMYC interactor (NMI) encodes a protein that interacts with NMYC and CMYC (two members of the oncogene Myc family), and other transcription factors containing a Zip, HLH, or HLH-Zip motif. The NMI protein also interacts with all STATs except STAT2 and augments STAT-mediated transcription in response to cytokines IL2 and IFN-gamma. The NMI mRNA has high expression in myeloid leukemia cell lines. NMYC interactor (NMI) encodes a protein that interacts with NMYC and CMYC (two members of the oncogene Myc family), and other transcription factors containing a Zip, HLH, or HLH-Zip motif. The NMI protein also interacts with all STATs except STAT2 and augments STAT-mediated transcription in response to cytokines IL2 and IFN-gamma. The NMI mRNA has low expression levels in all human fetal and adult tissues tested except brain and has high expression in cancer cell line-myeloid leukemias.</p> <p>Publication Note: This RefSeq record includes a subset of the publications that are available for this gene. Please see the Entrez Gene record to access additional publications.</p> <p>Alias Symbols: -</p> <p>Protein Interaction Partner: HSPA8, GCSH, GOLGA8EP, HDDC3, C9orf72, TXLNA, TXLNB, CNKSR3, LCA5L, C1orf216, SFR1, TUBA3E, MTMR9, COPS7B, BRMS1, KDM1A, POMZP3, HHLA3, EMILIN1, SNAPC5, MAD2L1BP, NMI, MTMR6, SCEL, TRAF5, UBC, PSMG3, OXR1, EXOSC4, TOLLIP, CYHR1, VPS26A, H1FX, NAA10, TBCD,</p> <p>Protein Size: 307</p>
-------------	--

Molecular Weight:	35 kDa
-------------------	--------

Gene ID:	9111
----------	------

NCBI Accession:	NM_004688 , NP_004679
-----------------	---

UniProt:	Q13287
----------	------------------------

Application Details

Application Notes:	Optimal working dilutions should be determined experimentally by the investigator.
--------------------	--

Comment:	Antigen size: 307 AA
----------	----------------------

Restrictions:	For Research Use only
---------------	-----------------------

Handling

Format:	Liquid
---------	--------

Concentration:	Lot specific
----------------	--------------

Buffer:	Liquid. Purified antibody supplied in 1x PBS buffer with 0.09 % (w/v) sodium azide and 2 %
---------	--

Handling

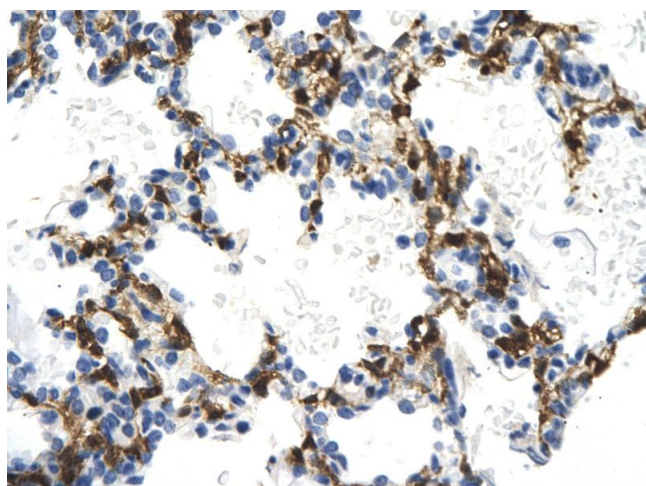
	sucrose.
Preservative:	Sodium azide
Precaution of Use:	This product contains Sodium azide: a POISONOUS AND HAZARDOUS SUBSTANCE which should be handled by trained staff only.
Handling Advice:	Avoid repeated freeze-thaw cycles.
Storage:	-20 °C
Storage Comment:	For short term use, store at 2-8°C up to 1 week. For long term storage, store at -20°C in small aliquots to prevent freeze-thaw cycles.

Images



Western Blotting

Image 1. WB Suggested Anti-NMI Antibody Titration: 0.2-1 ug/ml ELISA Titer: 1:312500 Positive Control: Human Placenta



Immunohistochemistry

Image 2. Rabbit Anti-NMI antibody Paraffin Embedded Tissue: Human Lung cell Cellular Data: Epithelial cells of renal tubule Antibody Concentration: 4.0-8.0 ug/ml Magnification: 400X