

Datasheet for ABIN2776430

anti-TCEAL1 antibody (Middle Region)**2** Images**1** Publication[Go to Product page](#)

Overview

Quantity:	100 µL
Target:	TCEAL1
Binding Specificity:	Middle Region
Reactivity:	Human, Mouse, Rat, Cow, Dog, Horse, Pig, Rabbit
Host:	Rabbit
Clonality:	Polyclonal
Conjugate:	This TCEAL1 antibody is un-conjugated
Application:	Western Blotting (WB), Immunohistochemistry (IHC)

Product Details

Immunogen:	The immunogen is a synthetic peptide directed towards the middle region of human TCEAL1
Sequence:	EGLSRKDLFE GRPPMEQPPC GVGKHKLEEG SFKERLARSR PQFRGDIHGR
Predicted Reactivity:	Cow: 87%, Dog: 87%, Horse: 87%, Human: 87%, Mouse: 87%, Pig: 87%, Rabbit: 87%, Rat: 80%
Characteristics:	This is a rabbit polyclonal antibody against TCEAL1. It was validated on Western Blot using a cell lysate as a positive control.
Purification:	Affinity Purified

Target Details

Target:	TCEAL1
Alternative Name:	TCEAL1 (TCEAL1 Products)

Target Details

Background:	<p>TCEAL1 is a member of the transcription elongation factor A (SII)-like (TCEAL) protein family. Members of this family may function as nuclear phosphoproteins that modulate transcription in a promoter context-dependent manner. TCEAL1 is similar to transcription elongation factor A/transcription factor SII and contains a zinc finger-like motif as well as a sequence related to the transcription factor SII Pol II-binding region. It may exert its effects via protein-protein interactions with other transcriptional regulators rather than via direct binding of DNA. This gene encodes a member of the transcription elongation factor A (SII)-like (TCEAL) gene family. Members of this family may function as nuclear phosphoproteins that modulate transcription in a promoter context-dependent manner. The encoded protein is similar to transcription elongation factor A/transcription factor SII and contains a zinc finger-like motif as well as a sequence related to the transcription factor SII Pol II-binding region. It may exert its effects via protein-protein interactions with other transcriptional regulators rather than via direct binding of DNA. Multiple family members are located on the X chromosome. Alternative splicing results in multiple transcript variants encoding a single isoform.</p> <p>Alias Symbols: SIIR, p21, pp21</p> <p>Protein Interaction Partner: MAPK14, DYRK1B, UBC, HOXB6, USP11, TCEAL2, TCEAL4, FEM1C, PPP2R2D, KDM3A, FEM1A, TIPIN, PDCD5, GMPS, CUL2, USP7, TCEB1, RFC1, HSPA4L, SSR3, PPP2R2A,</p> <p>Protein Size: 159</p>
-------------	---

Molecular Weight:	19 kDa
-------------------	--------

Gene ID:	9338
----------	------

NCBI Accession:	NM_001006640 , NP_001006641
-----------------	---

UniProt:	Q15170
----------	------------------------

Application Details

Application Notes:	Optimal working dilutions should be determined experimentally by the investigator.
--------------------	--

Comment:	Antigen size: 159 AA
----------	----------------------

Restrictions:	For Research Use only
---------------	-----------------------

Handling

Format:	Liquid
---------	--------

Concentration:	Lot specific
----------------	--------------

Handling

Buffer:	Liquid. Purified antibody supplied in 1x PBS buffer with 0.09 % (w/v) sodium azide and 2 % sucrose.
Preservative:	Sodium azide
Precaution of Use:	This product contains Sodium azide: a POISONOUS AND HAZARDOUS SUBSTANCE which should be handled by trained staff only.
Handling Advice:	Avoid repeated freeze-thaw cycles.
Storage:	-20 °C
Storage Comment:	For short term use, store at 2-8°C up to 1 week. For long term storage, store at -20°C in small aliquots to prevent freeze-thaw cycles.

Publications

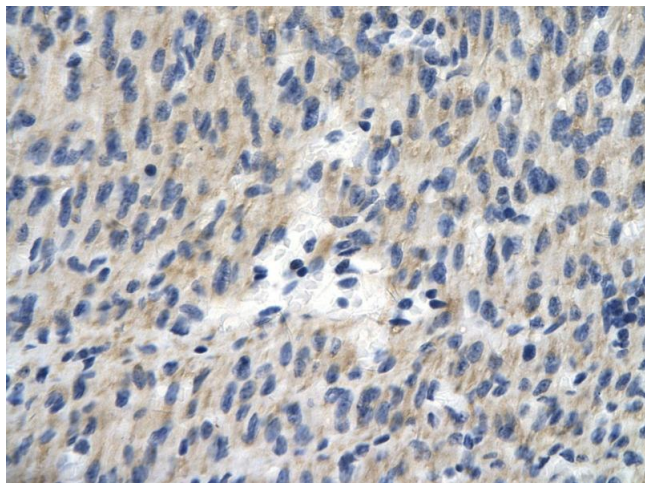
Product cited in:	Tilley, Harvey, Heguy, Hackett, Wang, OConnor, Crystal: "Down-regulation of the notch pathway in human airway epithelium in association with smoking and chronic obstructive pulmonary disease." in: American journal of respiratory and critical care medicine , Vol. 179, Issue 6, pp. 457-66, (2009) (PubMed).
-------------------	--

Images



Western Blotting

Image 1. WB Suggested Anti-TCEAL1 Antibody Titration: 0.2-1 ug/ml ELISA Titer: 1:1562500 Positive Control: Human Placenta



Immunohistochemistry

Image 2. Rabbit Anti-TCEAL1 antibody Paraffin Embedded
Tissue: Human Heart cell Cellular Data: Epithelial cells of
renal tubule Antibody Concentration: 4.0-8.0 ug/ml
Magnification: 400X