

Datasheet for ABIN2776432
anti-TBPL1 antibody (Middle Region)[Go to Product page](#)

2 Images

Overview

Quantity:	100 µL
Target:	TBPL1
Binding Specificity:	Middle Region
Reactivity:	Human, Mouse, Rat, Dog, Cow, Rabbit, Horse, Guinea Pig, Zebrafish (Danio rerio)
Host:	Rabbit
Clonality:	Polyclonal
Conjugate:	This TBPL1 antibody is un-conjugated
Application:	Western Blotting (WB), Immunohistochemistry (IHC)

Product Details

Immunogen:	The immunogen is a synthetic peptide directed towards the middle region of human TBPL1
Sequence:	LQKLGFQVIF TDFKVVNVLA VCNMPFEIRL PEFTKNNRPH ASYEPELHPA
Predicted Reactivity:	Cow: 100%, Dog: 100%, Guinea Pig: 100%, Horse: 100%, Human: 100%, Mouse: 100%, Rabbit: 100%, Rat: 100%, Zebrafish: 92%
Characteristics:	This is a rabbit polyclonal antibody against TBPL1. It was validated on Western Blot and immunohistochemistry.
Purification:	Protein A purified

Target Details

Target:	TBPL1
---------	-------

Target Details

Alternative Name:	TBPL1 (TBPL1 Products)
Background:	<p>Initiation of transcription by RNA polymerase II requires the activities of more than 70 polypeptides. The protein that coordinates these activities is transcription factor IID (TFIID), which binds to the core promoter to position the polymerase properly, serves as the scaffold for assembly of the remainder of the transcription complex, and acts as a channel for regulatory signals. TFIID is composed of the TATA-binding protein (TBP) and a group of evolutionarily conserved proteins known as TBP-associated factors or TAFs. TBPL1 encodes a protein that serves the same function as TBP and substitutes for TBP at some promoters that are not recognized by TFIID. It is essential for spermiogenesis and believed to be important in expression of developmentally regulated genes.</p> <p>Alias Symbols: TLF, TLP, STUD, TRF2, MGC:8389, MGC:9620</p> <p>Protein Interaction Partner: TNNT1, FUS, APP, PRNP, ELAVL1, UBC, TERF2, TERF1, TBPL2, TAF1L, TBP, TAF6, TAF5, TAF4, TAF1, HSPA9, GTF2A2, GTF2A1, SLC35F6, ABCF3, NDUFA6, GTF2B, PTCDD3, IRAK4, RAB35, PLIN3, RPL10, NF1, PMVK,</p> <p>Protein Size: 186</p>
Molecular Weight:	21 kDa
Gene ID:	9519
NCBI Accession:	NM_004865 , NP_004856
UniProt:	P62380

Application Details

Application Notes:	Optimal working dilutions should be determined experimentally by the investigator.
Comment:	Antigen size: 186 AA
Restrictions:	For Research Use only

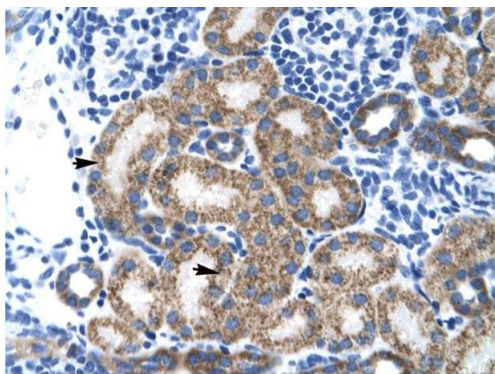
Handling

Format:	Liquid
Concentration:	Lot specific
Buffer:	Liquid. Purified antibody supplied in 1x PBS buffer with 0.09 % (w/v) sodium azide and 2 % sucrose.
Preservative:	Sodium azide

Handling

Precaution of Use:	This product contains Sodium azide: a POISONOUS AND HAZARDOUS SUBSTANCE which should be handled by trained staff only.
Handling Advice:	Avoid repeated freeze-thaw cycles.
Storage:	-20 °C
Storage Comment:	For short term use, store at 2-8°C up to 1 week. For long term storage, store at -20°C in small aliquots to prevent freeze-thaw cycles.

Images



Rabbit Anti-TBPL1 Antibody
Catalog Number: ARP35751
Lot Number: QC5088
Paraffin Embedded Tissue: Human Kidney
Cells with Positive label: Epithelial cells of renal tubule (Indicated with Arrows)
Antibody Concentration: 4.0-8.0 µg/ml
Magnification: 400X

Immunohistochemistry

Image 1. Human kidney



Western Blotting

Image 2. WB Suggested Anti-TBPL1 Antibody Titration:
1.25ug/ml ELISA Titer: 1:312500 Positive Control: HepG2
cell lysate