



[Go to Product page](#)

Datasheet for ABIN2776435
anti-DLX6 antibody (C-Term)

1 Image

1 Publication

Overview

Quantity:	100 µL
Target:	DLX6
Binding Specificity:	C-Term
Reactivity:	Human, Mouse, Zebrafish (Danio rerio), Rat, Dog, Rabbit, Cow, Guinea Pig, Horse
Host:	Rabbit
Clonality:	Polyclonal
Conjugate:	This DLX6 antibody is un-conjugated
Application:	Western Blotting (WB)

Product Details

Sequence:	FQQTQYLALP ERAELAASLG LTQTQVKIWF QNKRSKFKKL LKQGSPHES
Predicted Reactivity:	Cow: 100%, Dog: 100%, Guinea Pig: 100%, Horse: 100%, Human: 100%, Mouse: 100%, Rabbit: 100%, Rat: 100%, Zebrafish: 92%
Characteristics:	This is a rabbit polyclonal antibody against Dlx6. It was validated on Western Blot.
Purification:	Affinity Purified

Target Details

Target:	DLX6
Alternative Name:	Dlx6 (DLX6 Products)
Background:	The function of this protein remains unknown.

Target Details

Alias Symbols: RGD1561539

Protein Size: 268

Molecular Weight: 30 kDa

Gene ID: 500023

NCBI Accession: [XM_575377](#), [XP_575377](#)

Application Details

Application Notes: Optimal working dilutions should be determined experimentally by the investigator.

Comment: Antigen size: 268 AA

Restrictions: For Research Use only

Handling

Format: Liquid

Concentration: Lot specific

Buffer: Liquid. Purified antibody supplied in 1x PBS buffer with 0.09 % (w/v) sodium azide and 2 % sucrose.

Preservative: Sodium azide

Precaution of Use: This product contains Sodium azide: a POISONOUS AND HAZARDOUS SUBSTANCE which should be handled by trained staff only.

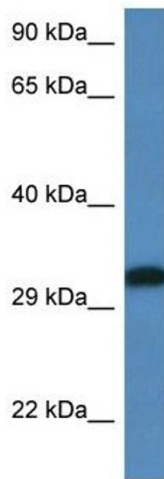
Handling Advice: Avoid repeated freeze-thaw cycles.

Storage: -20 °C

Storage Comment: For short term use, store at 2-8°C up to 1 week. For long term storage, store at -20°C in small aliquots to prevent freeze-thaw cycles.

Publications

Product cited in: Tilley, Harvey, Heguy, Hackett, Wang, OConnor, Crystal: "Down-regulation of the notch pathway in human airway epithelium in association with smoking and chronic obstructive pulmonary disease." in: **American journal of respiratory and critical care medicine**, Vol. 179, Issue 6, pp. 457-66, (2009) ([PubMed](#)).



Western Blotting

Image 1. WB Suggested Anti-Dlx6 Antibody Titration: 1.0 ug/ml Positive Control: Rat Muscle