

Datasheet for ABIN2776440
anti-LMYC antibody (Middle Region)[Go to Product page](#)

2 Images

Overview

Quantity:	100 µL
Target:	LMYC (MYCL)
Binding Specificity:	Middle Region
Reactivity:	Human, Mouse, Rat, Rabbit, Cow, Dog, Guinea Pig, Horse
Host:	Rabbit
Clonality:	Polyclonal
Conjugate:	This LMYC antibody is un-conjugated
Application:	Western Blotting (WB), Immunohistochemistry (IHC)

Product Details

Immunogen:	The immunogen is a synthetic peptide directed towards the middle region of human MYCL1
Sequence:	LERAVSDRLA PGAPRGNPPK ASAAPDCTPS LEAGNPAPAA PCPLGEPKTQ
Predicted Reactivity:	Cow: 92%, Dog: 92%, Guinea Pig: 92%, Horse: 92%, Human: 100%, Mouse: 100%, Rabbit: 100%, Rat: 100%
Characteristics:	This is a rabbit polyclonal antibody against MYCL1. It was validated on Western Blot and immunohistochemistry.
Purification:	Protein A purified

Target Details

Target:	LMYC (MYCL)
---------	-------------

Target Details

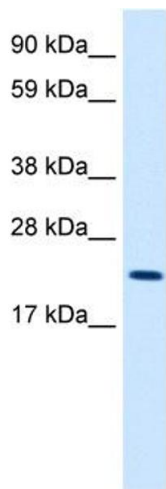
Alternative Name:	MYCL1 (MYCL Products)
Background:	<p>The MYCL1 gene encodes a protein which is associated with lung cancer in idiopathic pulmoary fibrosis.</p> <p>Alias Symbols: LMYC, MYCL, bHLHe38, MYCL1</p> <p>Protein Interaction Partner: MXD1, MAX,</p> <p>Protein Size: 206</p>
Molecular Weight:	25 kDa
Gene ID:	4610
NCBI Accession:	NM_005376 , NP_005367
Pathways:	Warburg Effect

Application Details

Application Notes:	Optimal working dilutions should be determined experimentally by the investigator.
Comment:	Antigen size: 206 AA
Restrictions:	For Research Use only

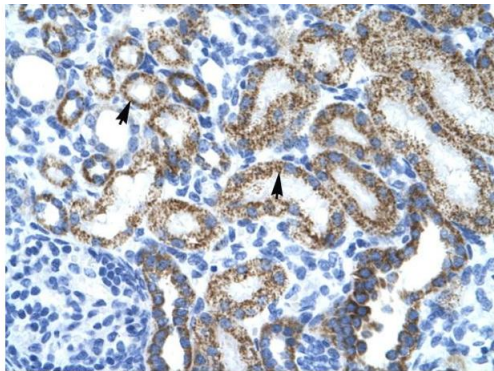
Handling

Format:	Liquid
Concentration:	Lot specific
Buffer:	Liquid. Purified antibody supplied in 1x PBS buffer with 0.09 % (w/v) sodium azide and 2 % sucrose.
Preservative:	Sodium azide
Precaution of Use:	This product contains Sodium azide: a POISONOUS AND HAZARDOUS SUBSTANCE which should be handled by trained staff only.
Handling Advice:	Avoid repeated freeze-thaw cycles.
Storage:	-20 °C
Storage Comment:	For short term use, store at 2-8°C up to 1 week. For long term storage, store at -20°C in small aliquots to prevent freeze-thaw cycles.



Western Blotting

Image 1. WB Suggested Anti-MYCL1 Antibody Titration: 2.5ug/ml ELISA Titer: 1:312500 Positive Control: Human kidney



Rabbit Anti-MYCL1 Antibody
Catalog Number: ARP35770
Lot Number: QC5114
Paraffin Embedded Tissue: Human Kidney
Cells with Positive label: Epithelial cells of renal tubule (Indicated with Arrows)
Antibody Concentration: 4.0-8.0 µg/ml
Magnification: 400X

Immunohistochemistry

Image 2. Human kidney